

Chapter-specific coding guidelines

NCCH



a u s t r a l i a

Chapter I Certain Infectious and Parasitic Diseases

2

- ❖ Categories range from A00 to B99
- ❖ 171 of 200 available categories have been used
- ❖ 21 blocks in the chapter
- ❖ Some infectious and parasitic diseases are classified elsewhere
- ❖ Five exclusions listed at chapter level
- ❖ Exceptions to the exclusions
- ❖ Presumption of infectious and noninfectious origin – see note at A09

NCCH



a u s t r a l i a

Chapter I Certain Infectious and Parasitic Diseases

3

- ❖ Tuberculosis codes A15-A16 identify method of confirmation of diagnosis
- ❖ B20-B23 - optional 4th character subcategories
- ❖ B90-B94 used for Sequelae
- ❖ B95-B97 to be used as additional codes for conditions classified elsewhere
- ❖ 'Certain' in the chapter title indicates that some infectious disease codes are located in other chapters

NCCH



a u s t r a l i a

Use additional code instruction

- ❖ codes from this chapter used with codes from other chapters where the instruction *Use additional code to identify infectious agent* is given
- ❖ e.g. urinary tract infection due to E coli – see note at N39.0

Coding HIV

- ❖ Single condition coding – use 4th characters to indicate manifestation of HIV
 - ❖ Eg B21.0 HIV disease resulting in Kaposi's sarcoma
 - ❖ Multiple condition coding – use >1 code for added specificity
 - ❖ Eg C46.- to indicate Kaposi's sarcoma and site of tumour
- PLUS**
- ❖ B21 HIV disease resulting in malignant neoplasm

Coding HIV

- ❖ Patients with HIV disease may require treatment for more than one disease.
 - ❖ Eg: HIV disease with mycobacterial and cytomegalovirus infection
- ❖ Conditions classifiable to two or more subcategories of the same 3 character category should be coded to the .7 subcategory of that category as MC

HIV - Human Immunodeficiency Virus B20-B24 Morbidity Coding

- ❖ Additional codes from within the block may be used, if desired, to specify the individual conditions listed.

- ❖ *Example:*
 - ❖ Main condition: Cytomegalovirus and candidiasis in HIV
 - ❖ Other conditions: —

- ❖ Code to:
 - ❖ B20.7 HIV disease resulting in multiple infections
 - ❖ B20.2 HIV disease resulting in cytomegaloviral disease
 - ❖ B20.4 HIV disease resulting in candidiasis

HIV - Human Immunodeficiency Virus B20-B24 Morbidity Coding

- ❖ Subcategory B22.7 should be used when conditions classifiable to two or more categories from B20-B22 are present.
- ❖ *Example:*
 - ❖ Main condition: HIV disease with *Pneumocystis carinii* pneumonia, Burkitt's lymphoma and oral candidiasis
 - Other conditions: —
- ❖ Code to:
 - ❖ B22.7 HIV disease resulting in multiple diseases
 - B20.6 HIV disease resulting in *Pneumocystis carinii* pneumonia
 - B21.1 HIV disease resulting in Burkitt's lymphoma
 - B20.4 HIV disease resulting in candidiasis

Coding HIV

- ❖ R75 - for inconclusive test results or for cases where mother is HIV +ve but disease not confirmed in baby
- ❖ Z21 - for cases where HIV test is positive but symptoms have not yet manifested, only used on admissions unrelated to HIV

Coding HIV

- ❖ B23.0 is used for acute illness following diagnosis of HIV.
- ❖ B20-B24 - used when a complication or manifestation of HIV is diagnosed.
- ❖ Can never use R75 or Z21 again for the patient once this stage is reached.

HIV – From infected transfusion Mortality Coding

- ❖ When an infected blood transfusion results in a HIV infection, code the HIV as the underlying cause and not the treated condition.

- ❖ *Example 1:*

I	(a)	Kaposi's sarcoma	1	year
	(b)	HIV	3	years
	(c)	Blood transfusion	5	years
	(d)	Haemophilia		since birth

- ❖ Select HIV as Underlying Cause of Death

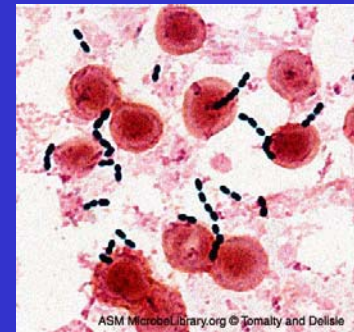
U codes for infectious diseases

- ❖ U80-U89 is a block of codes in *Chapter XXII Codes for special purposes*. These codes have been developed to identify bacterial agents resistant to antibiotics. These codes should never be used in primary coding, they are provided for use as a supplementary or additional code.

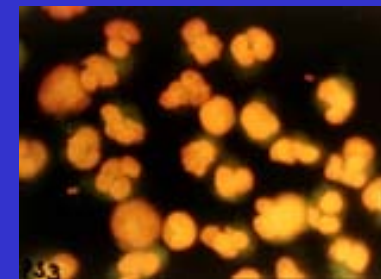
Medical Terminology Review

Certain Infectious and parasitic diseases

- ❖ Bacteria - one celled micro organisms
 - ❖ Three basic groups according to the shape
 - ❖ Rod shaped (Bacilli)
 - ❖ Spiral shaped (Spirilla)
 - ❖ Dot shaped (Cocci)
 - ❖ Diplococci (Pairs)
 - ❖ Streptococci (Chains)
 - ❖ Staphylococci (Bunches)



Streptococci

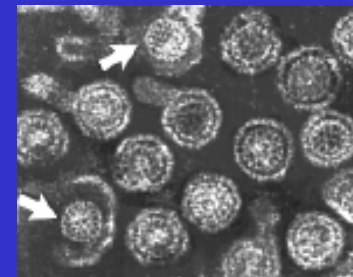
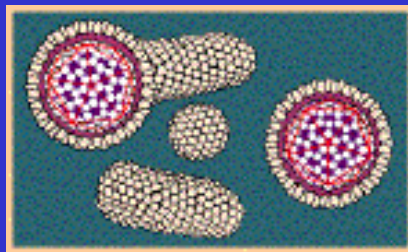


Staphylococci

Medical Terminology Review

Certain Infectious and parasitic diseases

- ❖ Viruses- Parasitic and smaller than Bacteria
- ❖ Are only able to replicate within a living host cell
- ❖ Controls metabolic activity of host cells via its own DNA or RNA “Instructions”
- ❖ Can adapt to new environments and become highly resistant to drugs



Herpes Simplex Virus

Certain Infectious and parasitic diseases

- ❖ Parasite – A plant or animal that lives upon or within another living organism
- ❖ A few *feed on human hosts*
 - ❖ *Single and multi-celled animals*
 - ❖ *Fungi*
 - ❖ *Bacteria*
- ❖ Viruses are sometimes considered to be parasites

Chapter I - Certain Infectious and Parasitic Diseases **Coding Exercises**

Common Index Lead Terms and modifiers:

Infection

Infestation

- by specified anatomical site
- by specified organism
- - as cause of disease classified elsewhere
- due to or resulting from
- - device
- wound

***Chapter I - Certain Infectious and
Parasitic Diseases***
Coding Exercises

**Complete the Infectious and Parasitic
diseases coding exercises in your
workbook**

NCCH



a u s t r a l i a

For the mortality exercises:

❖ Remember:

- ❖ Index - look up lead term and modifying terms for each COD
 - ❖ Pencil the index COD code in the appropriate place on the answer sheet.
- ❖ Tabular list - check each COD code:
 - ❖ Exclusions, Inclusions and Notes (Chapter, Section, Block and Code)
 - ❖ Confirm or revise each COD on the answer sheet.
- ❖ Selection rules
 - ❖ Enter TUCOD and Rule on answer sheet
- ❖ Modification rules
 - ❖ Enter modified TUCOD, Rule and Table E Acronym
- ❖ Re-apply Selection and Modification rules as necessary
- ❖ Confirm TUCOD in Table A
 - ❖ Enter Final UCOD

ANSWERS FOR MODULE 8

Chapter 1 - Certain Infectious and Parasitic Diseases

1. Chronic viral hepatitis C **B18.2**

- ❖ *Note that WHO has introduced a new entry in the Index, effective from January 2005, to clarify the duration of a disease before it is considered chronic. The new index entry is:*

Hepatitis

- viral

- - type

- - - C

- - - - chronic (duration six months or longer) B18.2

NCCH



australia

ANSWERS FOR MODULE 8

Chapter 1 - Certain Infectious and Parasitic Diseases

2. Congenital syphilis in an 18-month old child **A50.2**

- ❖ *Note that no symptoms are specified and the syphilis is not described as latent.*

ANSWERS FOR MODULE 8

Chapter 1 - Certain Infectious and Parasitic Diseases

3. Non-infective diarrhoea in a 3-week old infant **P78.3**

- ❖ *Look up diarrhoea in the Index - note that the terms in parentheses indicate that diarrhoea not otherwise specified is presumed infectious and coded to Chapter 1.*
- ❖ *Note that the age of the patient modifies the selection of the code. If the patient was not a neonate, the code would be K52.9 - diarrhoea, non-infective.*

ANSWERS FOR MODULE 8
Chapter 1 - Certain Infectious and Parasitic Diseases

4. Tuberculosis of lung, confirmed **A15.3**

❖ ***Note the **see** instruction in the Index***

ANSWERS FOR MODULE 8
Chapter 1 - Certain Infectious and Parasitic Diseases

5. Axillary cutaneous abscess **L02.4**

- ❖ *Note that if you look up Abscess, cutaneous the Index suggests to see also Abscess, by site. This indicates that there are other, more specific, codes available for body sites.*

ANSWERS FOR MODULE 8

Chapter 1 - Certain Infectious and Parasitic Diseases

Summary 1:

MC: **B20.7** *HIV disease resulting in multiple infections*

OC: **B20.0** *HIV disease resulting in mycobacterial infection*

B20.2 *HIV disease resulting in cytomegaloviral disease*

H32.0 *Chorioretinal inflammation in infectious & parasitic diseases classified elsewhere*

Proc: **41898-01 [544]** *Bronchoscopy with biopsy*



NCCH



australia

ANSWERS FOR MODULE 8
Chapter 1 - Certain Infectious and Parasitic Diseases

Summary 2:

MC: *K20 Oesophagitis*

OC *B37.8 Candidiasis of other sites*

K25.9 Gastric ulcer (includes erosions)

**Proc *30473-01[1008] Gastroscopy with
biopsy***

ANSWERS FOR MODULE 8

Mortality Coding Exercise 1

ICD-10 Codes

ICD-10 Codes				TUCOD Rule Acronym	
Line	1a	A41.9	_____	_____	G00.3 GP
	b	A41.0	_____	_____	
	c	G00.3	_____	_____	
	d	_____	_____	_____	
Line II		N28.9	E11.9	_____	

Final UCOD: *G00.3 Staphylococcal meningitis*

ANSWERS FOR MODULE 8

Mortality Coding Exercise 2

ICD-10 Codes

TUCOD Rule Acronym

Line	1a	U04.9	_____	_____
	b	_____	_____	_____
	c	_____	_____	_____
	d	_____	_____	_____
Line II		_____	_____	_____

Final UCOD: *U04.9 Severe acute respiratory syndrome, unspecified*

Notes and Comments: Only condition on certificate

NCCH



australia

Chapter II Neoplasms

- ❖ Categories range from C00 to D48.
- ❖ 136 of the 149 available categories have been allocated.
- ❖ 7 blocks, with the block of primary malignancy codes subdivided into 12 further sub-blocks.
- ❖ It is especially important when coding neoplasms to use both Volumes 1 and 3 in identifying the correct set of codes

Chapter II Neoplasms

- ❖ Four things you need to know to code a neoplasm:
 - ❖ behaviour (malignant, benign, in situ, uncertain)
 - ❖ anatomical site
 - ❖ primary site or metastasis
 - ❖ morphology (histology or cell type)
- ❖ e.g. malignant adenocarcinoma of breast (primary site) with secondaries to lung

Chapter II Neoplasms

- ❖ Chapter II is organised by tumour site and grouped in terms of behaviour
- ❖ Histology and behaviour are combined to create the morphology code
- ❖ Primary carcinoma of the pancreas is coded as:
 - ❖ Site code: C25.9 malignant primary neoplasm of pancreas
 - ❖ Morphology code: M8010/3 Primary carcinoma

Site of neoplasm

- ❖ point of origin of the tumour is the primary site
- ❖ should be coded as specifically as possible
- ❖ organs to which tumour has spread are called metastases or secondary tumours
- ❖ codes for metastases are less specific
- ❖ if a diagnosis does not specify if a site is primary or secondary, assume primary

Chapter II - Neoplasms

Site codes

- ❖ Table of Neoplasms is included in Volume 3 and includes the Chapter II codes for each anatomical site of tumour
- ❖ Site codes are listed in columns organised by behaviour

Chapter II - Neoplasms

IMPORTANT POINTS: MODULE 9

❖ Volume 3 Index Table of Neoplasms

Behaviour codes	/3	/6	/2	/0	/1
	Malignant Primary	Secondary	In situ	Benign	Uncertain or unknown behaviour
Neoplasm, neoplastic					
abdomen, abdominal	C76.2	C79.8	D09.7	D36.7	D48.7
- - cavity	C76.2	C79.8	D09.7	D36.7	D48.7
- - organ	C76.2	C79.8	-	D36.7	D48.7
- - viscera	C76.2	C79.8	-	D36.7	D48.7
- - wall	C44.5	C79.2	D04.5	D23.5	D48.5

Chapter II - Neoplasms

IMPORTANT POINTS: MODULE 9

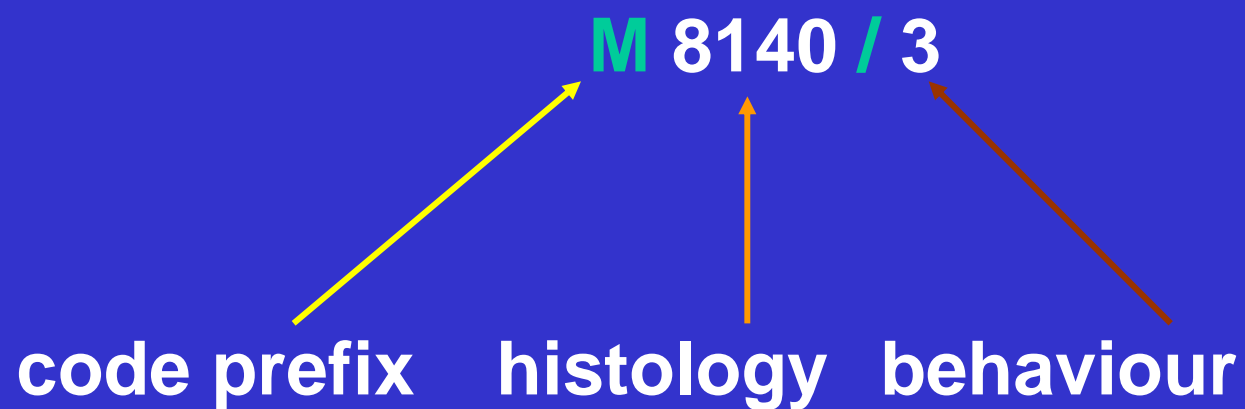
- ❖ The site code should be verified by looking up the code in Volume 1 the Tabular List
- ❖ Codes are organised anatomically and by behaviour, as can be deduced from the table of neoplasms
- ❖ In Chapter II, the 4th digit .9 is used for unspecified site and .8 is used for overlapping lesions of contiguous sites

Chapter II - Neoplasms

IMPORTANT POINTS: MODULE 9

- ❖ Morphology codes are made up of an histology and a behaviour code
- ❖ Histology describes the structure and type of cells or tissues as seen under the microscope
 - ❖ represented by the first four digits of the morphology code M **8010**/3
- ❖ Behaviour indicates how the tumour will behave i.e. malignant , in situ, of uncertain or unknown behaviour, or benign
 - ❖ represented by the digit following the slash M **8010**/**3**

Morphology codes



Chapter II - Neoplasms

IMPORTANT POINTS: MODULE 9

- ❖ Morphology of Neoplasms list in the back of Volume 1, is a comprehensive **but not exhaustive** list of morphological types of neoplasms
- ❖ If a clinician describes a neoplasm as having a certain behaviour, and the list of Morphology of neoplasms does not have the histological type listed with that behaviour, accept the clinician's diagnosis and change the behaviour character

Behaviour codes

/3

Malignant
primary

/6

Malignant
secondary

/2

In situ

/0

Benign

/1

Unknown/
Uncertain

NCCH



australia

Neoplasm coding

- ❖ Coding of neoplasms is slightly different to the coding process discussed earlier
- ❖ However the basic steps remain the same
- ❖ For an example let's follow the steps taken to code 'papilocystic carcinoma of the left ovary'

Papilocystic carcinoma of the left ovary

❖ First code the morphology

Carcinoma

- papilocystic (M8450/3)
- - specified site – see Neoplasm, malignant
- - unspecified site C56

❖ Take note of the morphology code. As we have a specified site, the ovary, we follow the see instruction & refer to the table of neoplasms

Papilocystic carcinoma of the left ovary

- ❖ Note that the behaviour part of the morphology code (/3) indicates this neoplasm is considered a malignant primary unless documented otherwise
- ❖ Therefore look up the site code for 'ovary' in the 'malignant primary' column of the table of neoplasms
- ❖ The code for the primary site is C56
- ❖ The codes for a papilocystic carcinoma of left ovary are C56, M8450/3

Lobular carcinoma arising in the lower outer quadrant of the left breast

- ❖ Follow the steps outlined in the example on **page 122** of the workbook and code **lobular carcinoma arising in the lower outer quadrant of the left breast**

Lymphomas and leukaemias

- ❖ Considered systemic diseases which do not metastasise or spread in the same way as solid tumours
- ❖ do not have secondary or metastatic site codes, all coded to range C81-C96

Chapter specific notes

- ❖ Read the notes for Malignant Neoplasms in section 4.2.7 of Volume 2 of the ICD-10
- ❖ Read the chapter specific notes for Chapter II: Neoplasms in section 4.4.4 of Volume 2 of the ICD-10
- ❖ Read the notes at the beginning of Chapter II in Volume 1 of the ICD-10
- ❖ Read the notes at the beginning of the Table of Neoplasms in Volume 3 of the ICD-10

Medical Terminology Review

Neoplasms

- ❖ **Carcinoma** – solid tumours derived from epithelial tissue
- ❖ **Sarcoma** – solid tumours derived from connective tissue and tumours arising from blood-forming tissue
- ❖ **Leukaemias** – tumours derived from bone marrow
- ❖ **Lymphomas** – tumours derived from immune cells of the lymphatic system

Medical Terminology Review

Neoplasms

- ❖ **Chemotherapy** – generic term for treatment by chemicals. Commonly associated with the treatment of malignant neoplasms
- ❖ **Adjuvant therapy** – assisting primary treatment
- ❖ **Biological therapy** – use of the body's own defence mechanisms to fight tumour cells
- ❖ **Radiotherapy** – Treatment using radiation
- ❖ **Pharmacokinetics** – Study of the distribution in and removal of drugs from the body over a period of time

Chapter II - Neoplasms

Common Index Lead Terms and modifiers:

Carcinoma

- basal cell
- ductal
- - infiltrative
- epidermoid
- follicular
- infiltrative
- intraepithelial (in-situ)
- oat cell
- squamous cell

Adenocarcinoma

- scirrhus

Paraganglioma

Melanoma

Fibrosarcoma

Sarcoma

Osteosarcoma

Papilloma

Adenoma

Acrospiroma

Neuroma

Glioma

Fibroma

Hydrocystoma

Cystadenocarcinoma

Neurofibroma

Chapter II - Neoplasms **Coding Exercises**

Complete the Neoplasm coding exercises
in your workbook.

NCCH



a u s t r a l i a

ANSWERS FOR MODULE 9

Chapter II - Neoplasms

1. Malignant bronchial adenoma **C34.9 M8140/3**

- ❖ *Note: In this case, the behaviour code in the Index (/1) indicates that an adenoma is generally a tumour of uncertain or unspecified nature. Remember that it is possible to change the behaviour (that is the fifth digit of the morphology code) to suit the diagnosis you have been given.*
- ❖ *Don't forget to use the Table of Neoplasms for the site code*

ANSWERS FOR MODULE 9

Chapter II - Neoplasms

2. Cholangiocarcinoma **C22.1 (M8160/3)**

- ❖ *Note that even though a site for the cancer is not specified, the Index entry and the morphological description indicate that the tumour is in the intrahepatic bile ducts - check the code description in Volume 1*

ANSWERS FOR MODULE 9

Chapter II - Neoplasms

3. Acute myelomonocytic leukaemia **C92.5** **M9867/3**

- ❖ *Note that it is important to look up the complete morphological description first - in this case, myelomonocytic leukemia - before looking up the modifiers "acute" or "chronic".*

ANSWERS FOR MODULE 9

Chapter II - Neoplasms

4. Squamous cell carcinoma cervix uteri **C53.9** **M8070/3**

- ❖ *Note: Read the note under “Carcinoma” in the Index which states that, except where otherwise indicated, carcinomas of any morphology in the list should be coded to a malignant neoplasm of that site.*

ANSWERS FOR MODULE 9
Chapter II - Neoplasms

5. Intra arterial chemotherapy for cancer treatment 96206-00 [1920]

NCCH



a u s t r a l i a

ANSWERS FOR MODULE 9

Chapter II - Neoplasms

Summary 1:

MC: **C91.0** *Acute lymphoblastic leukaemia*

OC: **M9821/3** *Acute lymphoblastic leukaemia
NOS*

Proc: **30084-00 [800]** *Percutaneous biopsy of
bone marrow*

96206-00 [1920] *Unspecified
administration of pharmacological
agent, antineoplastic agent*

ANSWERS FOR MODULE 9

Chapter II - Neoplasms

Summary 2:

- MC: **C51.9** *Malignant neoplasm of vulva, unspecified*
- OC: **M8743/3** *Superficial spreading melanoma, primary site*
C77.4 *Secondary & unspecified neoplasm of inguinal & lower limb lymph nodes*
M8743/6 *Superficial spreading melanoma, secondary site*
T81.0 *Haemorrhage & haematoma complicating a procedure, NEC*
Y83.6 *Surgical operation as cause of abnormal reaction of patient or of later complication, without mention of misadventure at time of procedure; removal of other organ*
- Proc: **35548-00 [1292]** *Radical vulvectomy*
30330-00 [809] *Radical excision of lymph nodes of groin*

ANSWERS FOR MODULE 9

Mortality Coding Exercise 1

ICD-10 Codes

ICD-10 Codes				TUCOD Rule Acronym			
Line	1a	C79.8	C25.9	_____	C79.8	2	
	b	_____	_____	_____	C25.9	C	LMP
	c	_____	_____	_____			
	d	_____	_____	_____			
Line II		_____	_____	_____			

Final UCOD: *C25.9 Primary malignant neoplasm, Pancreas, part unspecified*

Notes and Comments:

C79.8 selected using Rule 2.

Rule 3 applied as obvious consequence primary in Pancreas C25.9

See also Volume 2 Section 4.2.7 Malignant Neoplasms D. Malignant neoplasms with primary site indicated Example (a) The specification of one site as primary in either Part I or II.

ANSWERS FOR MODULE 9

Mortality Coding Exercise 2

ICD-10 Codes

Line	1a				TUCOD Rule Acronym
		C34.9	_____	_____	C34.9
	b	_____	_____	_____	
	c	_____	_____	_____	
	d	_____	_____	_____	
Line II		_____	_____	_____	

Final UCOD: *C34.9 Malignant neoplasm Bronchus or lung, unspecified*

Notes and Comments: Only condition on certificate.

Chapter III Diseases of the blood and blood-forming organs and certain disorders involving the immune mechanism

- ❖ Categories range from D50 to D89.
- ❖ 34 of the available 40 categories have been used.
- ❖ The chapter is divided into 6 blocks, 3 of which relate to anaemia.
- ❖ There are 2 asterisk categories in this chapter.
- ❖ Note: exclusions remind the coder that HIV disease is coded to Chapter I

Medical Terminology Review
Blood and Blood-forming Organs and Immune Mechanism

Blood

- **Primary function of blood is to maintain constant environment for the other living tissues of the body. Blood is the transport system for foods, gases and wastes throughout the body.**
- **Hormones are also carried by the blood from their site of secretion.**
- **Blood contains proteins and white blood cells that fight infection and platelets to help blood clot.**

Medical Terminology Review

Blood and Blood-forming Organs and Immune Mechanism

- Haem (Greek word haima meaning blood) Hem/o, haemato, -aemia, -haemia Haemat/oma
- Erythr (Greek word erythros meaning red) erythr/o Erythr/o/poiesis
- Reticul (Latin word reticulum meaning small net) Reticul/o Reticul/o/cyte
- Leuc (Greek word leukos meaning white) leuc/o leuk/o Leukaemia, leuc/o/cyt/osis
- Myel (Greek word myelos meaning narrow – here used to refer to bone marrow which gives rise to the granulocyte, a type of white blood cell) Myel/o/fibr/osis

Medical Terminology Review

Blood and Blood-forming Organs and Immune Mechanism

Immune system

- The immune system is the body's defence response against foreign organisms
- Lymphoid organs - lymph nodes, spleen, thymus gland, and their products, lymphocytes, antibodies, macrophages (phagocytes found in the blood, brain, liver, lymph nodes and spleen)
- Immunity is the capacity to resist foreign organisms and toxins (poisons) that can damage tissues and organs

Chapter III – Diseases of the Blood and Blood forming organs

Anemia

- aplastic
- blood loss
- deficiency
 - - amino acid
 - - - copper
- hemolytic
- iron deficiency
 - protein deficiency

Defect

- coagulation

Purpura

Deficiency

- vitamin
 - factor
 - - VIII

Sarcoidosis

Immunodeficiency

Cryoglobulinemia

Hypergammaglobulinemia

Hyper/Hyposplenism

Thrombocytosis

Eosinophilia

Agranulocytosis

Chapter III Diseases of the blood and blood-forming organs and certain disorders involving the immune mechanism

Complete the Blood and Blood-forming Organs and Immune Mechanism coding exercises in your workbook

NCCH



a u s t r a l i a

ANSWERS FOR MODULE 10
***Chapter III – Blood, blood forming organs and
certain disorders of the immune mechanism***

1. Hypogammaglobulinemia *D80.1*

ANSWERS FOR MODULE 10

Chapter III – Blood, blood forming organs and certain disorders of the immune mechanism

2. Laparoscopic splenectomy **31470-00 [815]**

- *Note: default code is for open procedure but laparoscopic is an essential modifier*

ANSWERS FOR MODULE 10

Chapter III – Blood, blood forming organs and certain disorders of the immune mechanism

3. Hypochromic-microcytic anemia **D50.8**

NCCH



a u s t r a l i a

ANSWERS FOR MODULE 10

Chapter III – Blood, blood forming organs and certain disorders of the immune mechanism

4. Hyperimmunoglobulin E (Hyper-IgE) syndrome *D82.4*

ANSWERS FOR MODULE 10

Chapter III – Blood, blood forming organs and certain disorders of the immune mechanism

5. Thrombotic thrombocytopenic purpura *M31.1*

ANSWERS FOR MODULE 10

Chapter III – Blood, blood forming organs and certain disorders of the immune mechanism

Summary 1:

MC: **K26.6** *Duodenal ulcer, chronic or unspecified with both haemorrhage and perforation*

OC: **D62** *Acute posthaemorrhagic anaemia*

Proc: **30375-10 [887]** *Oversewing, ulcer perforated*

ANSWERS FOR MODULE 10

Chapter III – Blood, blood forming organs and certain disorders of the immune mechanism

Summary 2:

- MC: **D59.4** *Other non autoimmune haemolytic anaemia*
- OC: **N39.0** *Urinary tract infection, site not specified*
- B96.2** *E coli as cause of diseases classified to other chapters*
- Q62.5** *Duplication of ureter*
- Proc: **58706-00 [1978]** *Pyelography, intravenous*

ANSWERS FOR MODULE 10

Mortality Coding Exercise 1

ICD-10 Codes

ICD-10 Codes					TUCOD Rule Acronym		
Line	1a	D64.9	_____	_____	R16.1	GP	
	b	R16.1	_____	_____	D64.8	A	IDDC
	c	_____	_____	_____			
	d	_____	_____	_____			
Line II		_____	_____	_____			

Final UCOD: *D64.8 Other specified anaemias*

Notes and Comments:

R16.1 Splenomegaly selected as TUCOD with General Principle Modified by D64.9 Anaemia using Rule A Senility and Ill-defined Conditions (IDDC)

NCCH



a u s t r a l i a

ANSWERS FOR MODULE 10

Mortality Coding Exercise 2

ICD-10 Codes

Line	1a	B21.0	_____	_____	TUCOD Rule	Acronym
	b	D50.9	_____	_____	B21.0	Rule 2
	c	_____	_____	_____		
	d	_____	_____	_____		
Line II		_____	_____	_____		

Final UCOD: *B21.0 HIV disease with Karposi's sarcoma*

Notes and Comments:

B21.0 HIV disease with Karposi's sarcoma is selected as TUCOD using Rule 2

No further modification is required.

NCCH



australia

Chapter IV Endocrine, Nutritional and Metabolic Disorders

- ❖ Categories in this chapter range from E00 to E90.
- ❖ 73 of the available 91 categories have been allocated.
- ❖ The chapter is divided into 8 blocks.
- ❖ There are 2 asterisk categories.
- ❖ Included are disorders of the endocrine glands (E00- E35), nutritional disorders (E40- E64) and metabolic disorders (E65- E90).

Coding of diabetes

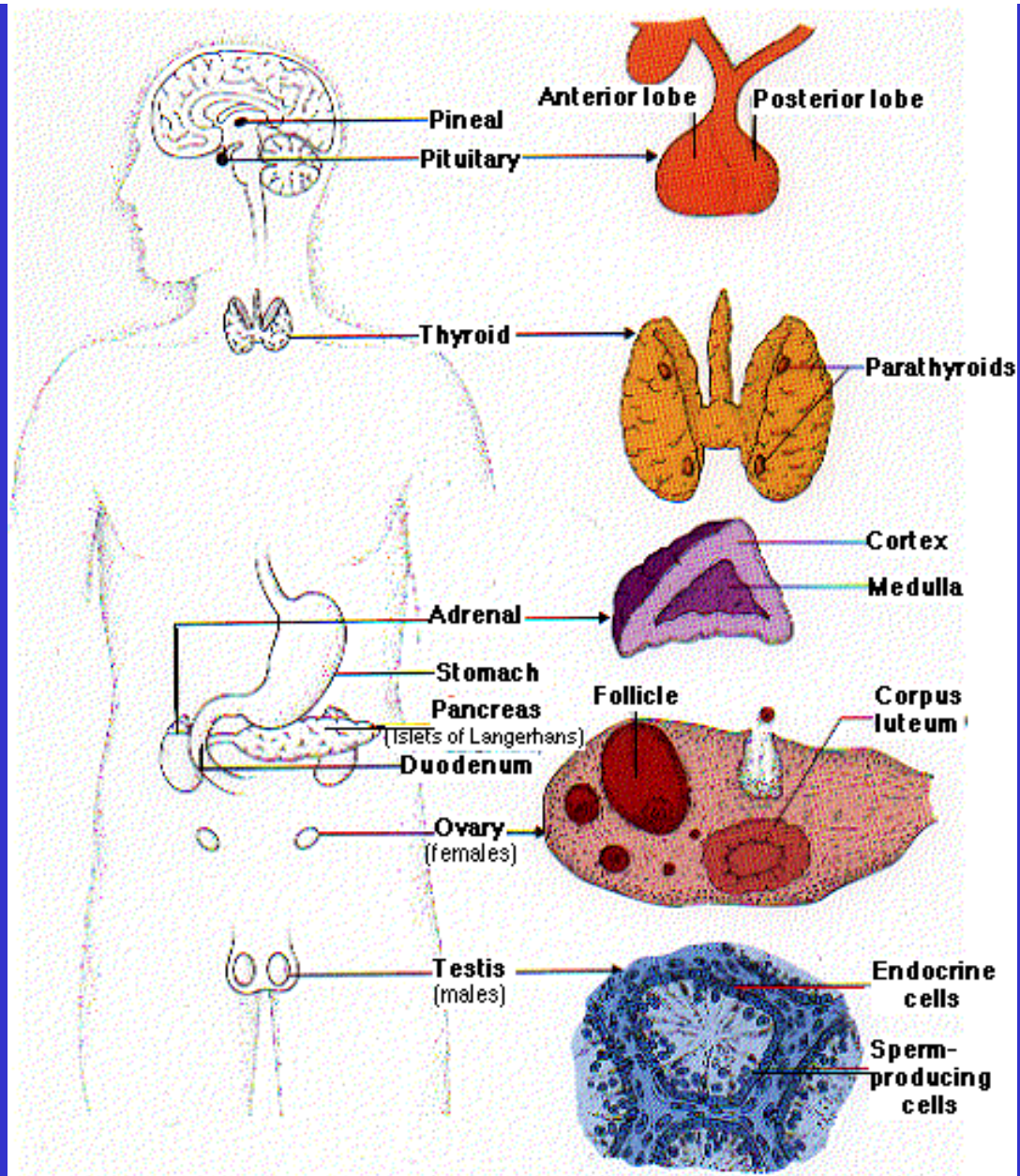
❖ Diabetes

- ❖ type I - insulin dependent (IDDM)
- ❖ type II - non-insulin dependent (NIDDM)

- ❖ IDDM and NIDDM identified at 3 character level of codes, with complications specified at 4th character

Complications of diabetes

- ❖ 4th characters added to codes E10-E14
 - ❖ with coma (.0) or with ketoacidosis (.1)
 - ❖ with body system complications eg renal (.2), ophthalmic (.3), neurological (.4), peripheral circulatory (.5)
 - ❖ with multiple complications (.7), other specified (.6) or unspecified (.8) complications or no complications (.9)
- ❖ use an additional code with 4th characters .2 - .8 to indicate specific complication or manifestation



Common thyroid problems

- ◆ **Goiter - enlargement of thyroid**
- ◆ **Thyroid Cancer – most commonly occurs in women**
- ◆ **Hyperthyroidism - excessive production of thyroid hormone**
- ◆ **Hypothyroidism - insufficient production of thyroid hormone**

Common Parathyroid Problems

- ◆ Osteoporosis - means porous bones
- ◆ Hyperparathyroidism - excessive production of parathyroid hormone
- ◆ Exophthalmos - often a symptom and means protrusion of the eyeball
- ◆ Hypoparathyroidism – underproduction of parathyroid hormone

Problems of the Adrenal Gland

- ◆ Addison's disease (adrenocortical insufficiency) - insufficient secretion of corticosteroids.
- ◆ SIADH - condition in which secretion of inappropriate antidiuretic hormone results in decreased sodium levels in the blood and weight gain
- ◆ Hirsutism - increased hair growth
- ◆ Cushing's Syndrome - overexposure to corticosteroids, from overproduction by the adrenal glands or administration of excessive amounts by a doctor
- ◆ Hyperaldosteronism - overproduction of aldosterone affects the blood levels of sodium, potassium, bicarbonate, and chloride, leading to high blood pressure, weakness, periods of paralysis

Common Problems Pancreas

Diabetes is divided into two major subgroups:

- ◆ Type 1 - blood sugar problem caused by insulin deficiency
- ◆ Type 2 - blood sugar problem caused by insulin resistance
- ◆ Diabetes insipidus - disorder characterised by excessive thirst (polydipsia) and excessive urination (polyuria) due to inadequate production of antidiuretic hormone
- ◆ Hyperglycaemia - abnormally high levels of glucose in the blood

Problems of ovaries & testes

- ◆ **Hypergonadism - overproduction of sex hormones by the testes or ovaries**
- ◆ **Hyperpituitarism - overactivity of the anterior lobe of the pituitary gland**
- ◆ **Hypocrinism - condition caused by deficient secretion of hormones by any gland**
- ◆ **Hypogonadism - underproduction of sex hormones by the testes or ovaries**

Chapter IV – Endocrine, Nutritional and Metabolic Diseases

Common Index Lead Terms and modifiers:

Diabetes, diabetic

- arthropathy
- coma
- gangrene
- retinopathy
- neuropathy

Ketoacidosis

Hypo/Hyperparathyroidism

Hyperfunction

Disorder

- metabolism

Syndrome

- Cushing's

Overactivity

Malnutrition

Deficiency

- nutrient
- vitamin

Scurvy

Disturbance

Hypercholesterolemia

Cystic fibrosis

***Chapter IV – Endocrine, nutritional and
metabolic disorders***
Coding Exercises

**Complete the Endocrine, Nutritional and
Metabolic Diseases coding exercises in your
workbook**

NCCH



a u s t r a l i a

ANSWERS FOR MODULE 11

Chapter IV – Endocrine, Nutritional and Metabolic Diseases

1. Type II diabetes mellitus with (related) peripheral angiopathy, left foot **E11.5 † and I79.2***

- ❖ *Note that the Index entry has a .- so you need to check the Tabular list for the correct fourth character. You will find a note referring you to the list of options. The patient has peripheral angiopathy, a peripheral circulatory complication. Therefore .5 is the appropriate fourth character to use. Note also that peripheral angiopathy is listed as an inclusion term beneath .5 and that an asterisk code is listed with it.*

ANSWERS FOR MODULE 11
***Chapter IV – Endocrine, Nutritional and
Metabolic Diseases***

**2. Cystic fibrosis, admitted because of
chronic *pseudomonas* bronchitis **J42,
B96.5, E84.0****

- ❖ *Note: As the type of organism is given but not listed in the Index under bronchitis we have to code the organism as well.*
- ❖ *When multiple coding, the Cystic Fibrosis should be coded as well.*

ANSWERS FOR MODULE 11
***Chapter IV – Endocrine, Nutritional and
Metabolic Diseases***

**3. Obesity associated with Prader-Willi
Syndrome **Q87.1****

***Note: Refer to the exclusion note for E66 in
the Tabular list, which states that if the
obesity occurs with Prader-Willi
Syndrome, the code Q87.1 should be used
instead.***

ANSWERS FOR MODULE 11
***Chapter IV – Endocrine, Nutritional and
Metabolic Diseases***

**4. Medullary carcinoma of the thyroid with
hyperparathyroidism**

C73 M8510/3 E21.1

- ❖ Note: don't forget to use the normal Index entries for the morphology and the Table of Neoplasms for the site code.***

ANSWERS FOR MODULE 11
***Chapter IV – Endocrine, Nutritional and
Metabolic Diseases***

5. Re-opening of thyroid wound for control
of haemorrhage **90047-02 [111]**

❖ *Lead term is Reopening*

ANSWERS FOR MODULE 11
***Chapter IV – Endocrine, Nutritional and
Metabolic Diseases***

Summary 1:

MC: E10.3† *Insulin dependent diabetes
mellitus with ophthalmic
complications*

OC: H36.0* *Diabetic retinopathy*

Proc: -

ANSWERS FOR MODULE 11

Chapter IV – Endocrine, Nutritional and Metabolic Diseases

Summary 2:

MC: **C73** *Malignant neoplasm of thyroid gland*

OC: **M8050/3** *Papillary carcinoma NOS, primary site*

C79.8 *Malignant neoplasm of other secondary sites*

M8050/6 *Papillary carcinoma NOS, secondary site*

Proc: **30296-00 [115]** *Total thyroidectomy*

ANSWERS FOR MODULE 11

Mortality Coding Exercise 1

ICD-10 Codes

Line		ICD-10 Code	ICD-10 Code	TUCOD	Rule Acronym
	1a	N17.9	N18.9	E11.9	GP
	b	N05.9		E11.2	Rule C LMC
	c	E14.2†	(N08.3*)	E05.9	Rule C LMC
	d	E11.9			

Line II S72.0 (X59), Y83.1; T81.0

Final UCOD: *E11.2 Non-insulin dependant diabetes mellitus with renal complications.*

Notes and Comments: Select E11.9 as TUCOD with General Principle.

Modified by *N05.9 Unspecified nephritic syndrome, Unspecified (morphology)* and *E14.2† Unspecified Diabetes mellitus, without complications* using Rule C Linkage LMC (Linkage, Mention, Combination) to *E11.2 Non-insulin dependant diabetes mellitus with renal complications*. No further modification is required.

ANSWERS FOR MODULE 11

Mortality Coding Exercise 2

ICD-10 Codes

ICD-10 Codes					TUCOD Rule Acronym	
Line	1a	K02.9	_____	_____	K02.9	GP
	b	_____	_____	_____	E14.9	Rule B
	c	_____	_____	_____		
	d	_____	_____	_____		
Line II		E14.9	_____	_____		

Final UCOD: *E14.9 Unspecified Diabetes Mellitus*

Notes and Comments:

K02.9 Dental Caries is selected as TUCOD as it is the only condition listed in Part 1 of the certificate.

K02.9 is in Table H as a trivial condition. Reselect the UCOD as though the trivial condition were not reported on the certificate; therefore **Diabetes** is selected as UCOD (only condition listed on the certificate) using Rule B Trivial conditions.

NCCH



a u s t r a l i a

Chapter V Mental and Behavioural Disorders

- ❖ Categories range from F00 to F99
- ❖ Of the 100 available categories, 78 have been allocated
- ❖ The chapter is divided into 11 blocks
- ❖ There are 2 asterisk categories
- ❖ Each category is prefaced by a comprehensive description of the disorders included in it
- ❖ There is emphasis on behavioural disorders as well as mental disorders

Chapter V Mental and Behavioural Disorders

- ❖ Block F00-F09 covers organic mental disorders
- ❖ Block F10-F19 covers disorders due to the use of psychoactive or other substances. The third character indicates the substance involved and the fourth character indicates the clinical state.
- ❖ Note that the fourth character *.0 Acute intoxication* excludes 'Intoxication meaning poisoning' which is coded to T36-T50

Chapter V Mental and Behavioural Disorders

- ❖ Only chapter of ICD-10 with full descriptions of the diseases coded to each category
- ❖ Tobacco - F17.1 and F17.2 can only be used if there is clear documentation to indicate a causal relationship between smoking and a diagnosis - use of tobacco harms the patient or causes dependence
 - ❖ coded in addition to specific diagnosis code
 - ❖ use Z72.0, Z86.4 to indicate current/history of tobacco use

Chapter V – Mental and Behavioural Disorders
IMPORTANT POINTS: MODULE 12

- definitive diagnosis in a patient with a mental or behavioural disorder can be complicated & lengthy
- Many traits and behaviours are common to many mental and behavioural disorders
- Sometimes years of assessment and observation may be necessary before a definitive diagnosis can be established

The main condition should not be coded until the clinician has clearly recorded it in the patient's medical record

Common Medical Terminology Mental and Behavioural Disorders

- ❖ Psycho Amnesic
- ❖ Psychoactive
- ❖ Dissociative
- ❖ Senile
- ❖ Catatonic
- ❖ Delirium
- ❖ Hallucination
- ❖ Affective
- ❖ Schizo
- ❖ Organic
- ❖ Retardation
- ❖ Neuro
- ❖ Vascular
- ❖ Dementia
- ❖ Mood
- ❖ Anxiety
- ❖ Panic
- ❖ Cognitive
- ❖ Asthenia
- ❖ Epileptic
- ❖ Brain
- ❖ Personality
- ❖ DisorderIntoxication
- ❖ Dependence
- ❖ Withdrawal
- ❖ Paranoia
- ❖ Residual
- ❖ Transient
- ❖ Delusional
- ❖ Polymorphic

Common Medical Terminology Mental and Behavioural Disorders

- ❖ Acute
- ❖ Mania
- ❖ Non-organic
- ❖ Symptomatic
- ❖ Hypomania
- ❖ Bipolar
- ❖ Depression
- ❖ Remission
- ❖ Reactive
- ❖ Persistent
- ❖ Trait
- ❖ Personality
- ❖ Phobia
- ❖ Agoraphobia
- ❖ Auditory
- ❖ Hebephrenia
- ❖ Paroxysmal
- ❖ Episodic
- ❖ Stress
- ❖ Compulsive
- ❖ Obsessive
- ❖ Adjustment
- ❖ Fatigue
- ❖ Conversion
- ❖ Post-traumatic
- ❖ Motor
- ❖ Fugue
- ❖ Stupor
- ❖ Somatoform
- ❖ Hypochondria
- ❖ Psychogenic
- ❖ Anorexia

Common Medical Terminology Mental and Behavioural Disorders

- ❖ Trait
- ❖ Insomnia
- ❖ Hypersomnia
- ❖ Insomnia
- ❖ Bulimia
- ❖ Abuse
- ❖ Autism
- ❖ ImpulseSchizoid
- ❖ Dissocial
- ❖ Anankastic
- ❖ Histrionic
- ❖ Unstable
- ❖ Trichotillomania
- ❖ Pyromania
- ❖ Pathological
- ❖ Psycho-pharmacology
- ❖ Id, Ego, Superego
- ❖ Atypical
- ❖ Conduct
- ❖ Electroconvulsive
- ❖ Avoidant
- ❖ Psychiatric
- ❖ Syndrome

Chapter V – Mental and behavioural disorders

Common Index Lead Terms and modifiers:

Disorder

- affective
- bipolar
- personality

Schizophrenia

Abuse

- drugs

Harmful Use (of)

Dependence

Anxiety

Dementia

Retardation

Depression

Phobia

Psychosis, psychotic

Neurosis, neurotic

Mania

Schizoid

***Chapter V – Mental and Behavioural
disorders***
Coding Exercises

**Complete the Mental and Behavioural Disorders
coding exercises in your workbook**

NCCH



a u s t r a l i a

ANSWERS FOR MODULE 12
Chapter V – Mental and behavioural disorders

- 1. Alcohol and drug rehabilitation**
92008-00[1872]

ANSWERS FOR MODULE 12
Chapter V – Mental and behavioural disorders

2. Psychogenic impotence

F52.2

NCCH



a u s t r a l i a

ANSWERS FOR MODULE 12

Chapter V – Mental and behavioural disorders

3. Korsakov's psychosis **F10.6**

Note: When you refer to the Tabular List for F10, you will see a note telling you to look for a fourth character subdivision. However, even when we have already been given a fourth character by the Index. We should still confirm that the .6 is the correct code to use. By reading the notes under .6 in the Tabular list we can see Korsakov's psychosis listed there.

ANSWERS FOR MODULE 12
Chapter V – Mental and behavioural disorders

4. Huntington's disease with dementia
G10† F02.2*

Note: you can look up either Huntington's disease or chorea in the Index.
Huntington's chorea is a synonym of Huntington's disease.

ANSWERS FOR MODULE 12

Chapter V – Mental and behavioural disorders

5. Bipolar disorder, currently severely depressed but not psychotic **F31.4**

Note: Refer to the Tabular List for F31.9. F31.9 is unspecified bipolar affective disorder. We now know that bipolar disorder and bipolar affective disorder are the same. Therefore we can look in the F31 category to see if we can find a more specific code as we has been told that this person is severely depressed but not psychotic. The correct code is F31.4.

ANSWERS FOR MODULE 12

Chapter V – Mental and behavioural disorders

Summary 1:

MC: **F25.9** *Schizoaffective disorder, unspecified*

OC: **Z91.1** *Personal history of non compliance with medical treatment and regimen*

S60.7 *Multiple superficial injuries of wrist and hand*

W22.29 *Striking against or struck by other objects, police cell, unspecified activity*

X83.29 *Intentional self-harm by other specified means, police cell, unspecified activity*

Proc: -

ANSWERS FOR MODULE 12

Chapter V – Mental and behavioural disorders

Summary 2:

MC:	T42.4	<i>Poisoning by benzodiazepines</i>
OC:	X61.99	<i>Intentional self-poisoning by antiepileptic, sedative-hypnotic, antiparkinsonism and psychotropic drugs NEC, unspecified site, unspecified activity</i>
	F32.9	<i>Depressive episode, unspecified</i>
Proc:	-	

ANSWERS FOR MODULE 12

Mortality Coding Exercise 1

ICD-10 Codes

Line		ICD-10 Code	ICD-10 Code	TUCOD	Rule	Acronym
Line I	1a	F10.6	_____	F10.2	GP	
	b	K70.3	_____	F106	Rule C	LMP
	c	F10.2	_____	K703	Rule C	LMP
	d	_____	_____			
Line II		_____	_____			

Final UCOD: *K70.3 Alcoholic cirrhosis of the liver*

Notes and Comments: *F10.2 Mental and behavioural disorders due to use of alcohol use, dependency syndrome* selected as TUCOD with General Principle.

Modified by *F10.6 Mental and behavioural disorders due to use of alcohol use, amnesic syndrome* using Rule C Linkage LMP (Linkage, Mention, Preferred)

Modified by *K70.3 Alcoholic cirrhosis of the liver* Rule C Linkage LMP (Linkage, Mention, Preferred).

NCCH



australia

ANSWERS FOR MODULE 12

Mortality Coding Exercise 2

ICD-10 Codes

Line	1a	X74.98	S01.9	_____	TUCOD Rule	Acronym
	b	F32.2	_____	_____	X74.98	Rule 2
	c	_____	_____	_____		
	d	_____	_____	_____		
Line II		_____	_____	_____		

Final UCOD: *X74.98 Intentional self-harm by other and unspecified firearm discharge, unspecified place of occurrence, unspecified activity*

Notes and Comments:

X74 selected as TUCOD using Selection Rule 2.

X74 is not modified by the other codes. Coders should consider the concept of coding deaths due to injury when assigning the UCOD code for an injury related death. The UCOD will (nearly) always be the External Cause of the Injury.

Chapter VI Diseases of Nervous System

- ❖ The categories in this chapter range from G00 to G99
- ❖ 67 of the 100 available categories have been used
- ❖ There are 16 asterisk categories
- ❖ The chapter relates to both the central and peripheral nervous systems

Chapter VI Diseases of Nervous System

- ❖ G00-G09 classifies disease where the nerve tissue is attacked by various organisms
- ❖ G40-G47 concerns disorders which occur periodically, e.g. epilepsy, migraines and sleep disorders
- ❖ The exclusion note at the beginning of block G50-G59 should be clearly understood. Current injuries to nerves should be classified under injury of the body region

Chapter VI Diseases of Nervous System

- ❖ Many asterisk categories in this chapter because many underlying diseases, such as infections, result in nervous system manifestations
- ❖ G30.- subdivided by age of onset - before and after age 65 years
- ❖ G40.- Epilepsy subdivided by type of epilepsy, excluding
 - ❖ G41 *Status epilepticus*
 - ❖ R56.8 *Seizures and convulsions NOS*
- ❖ G45.- *Transient ischaemic attacks* excludes stroke (coded to I64.-)

Hemiplegia, paraplegia, other paralytic syndromes

- ❖ Only used as main diagnosis if documented without any further specification, or stated as old or long-standing without specific cause
- ❖ more commonly used as secondary diagnosis to identify the outcome of trauma or diseases such as cerebrovascular accidents or tumours

Structure of the Nervous System

- ❖ Central Nervous System (CNS)
 - ❖ Brain
 - ❖ Spinal Cord
- ❖ Peripheral Nervous System (PNS)
 - ❖ Cranial (12 pairs)
 - ❖ Spinal Nerves (31 pairs)
 - ❖ Autonomic Nerves
 - ❖ Parasympathetic nerves
 - ❖ Sympathetic nerves
- ❖ Plexus – large networks of nerves in the peripheral nervous system
 - ❖ Brachial
 - ❖ Lumbar
 - ❖ Sacral

Medical Terminology Review

Diseases of the nervous system

neuro – nerve

cerebellum

dura

cephalo – head

cortex

coma

cerebral – brain

sulci

tomography

hypothalamus

axon

receptor

cerebrospinal

dendrite

glioma

grey matter

receptor

dopamine

white matter

ventricle

epilepsy

myelin sheath

pons

paresis

meninges

ganglia

ataxia

thalamus

palsy

dyslexia

Chapter VI – Diseases of the Nervous System

Common Index Lead Terms and modifiers:

Disorder

- nerve
- - plexus
- - root

Epilepsy, epileptic, epilesia

- fit

Spasm

Paraplegia

Polyneuropathy

Syndrome

- carpal tunnel

Convulsions

- myoclonic

- neonatal

Neuropathy

Palsy

Tetraplegia

Ataxia

Chapter VI Diseases of Nervous System

Coding Exercises

Complete the Diseases of the Nervous System coding exercises in your workbook

NCCH



a u s t r a l i a

ANSWERS FOR MODULE 13
Chapter VI Diseases of Nervous System
Coding Exercises

1. Diabetic polyneuropathy **E14.4† G63.2***

Note: You should always refer to the E10-E14 categories to determine that you have the correct code for the type of diabetes. In this case the diabetes is unspecified, therefore the E14 is the code to use.

ANSWERS FOR MODULE 13
Chapter VI Diseases of Nervous System
Coding Exercises

2. Herpesviral encephalitis *B00.4† G05.1**

NCCH



a u s t r a l i a

ANSWERS FOR MODULE 13
Chapter VI Diseases of Nervous System
Coding Exercises

3. Congenital muscular dystrophy **G71.2**

ANSWERS FOR MODULE 13
Chapter VI Diseases of Nervous System
Coding Exercises

5. Chronic fatigue syndrome G93.3

ANSWERS FOR MODULE 13

Chapter VI Diseases of Nervous System

Coding Exercises

Summary 1:

MC: **G50.0** *Trigeminal neuralgia*

OC: -

Proc: **39106-00 [73]** *Division of intracranial trigeminal nerve*

Summary 2:

MC: **G43.9** *Migraine, unspecified*

OC: **I10** *Essential Hypertension*

E66.9 *Obesity, unspecified*

Proc: **56007-00 [1952]** *CT of brain with intravenous contrast medium*

39000-00 [30] *Lumbar puncture*

ANSWERS FOR MODULE 13

Mortality Coding Exercise 1

ICD-10 Codes

Line	1a	S02.1	_____	_____	TUCOD Rule	Acronym
	b	W19	G40.9	_____	G40.9	Rule 1
	c	I10	_____	_____		
	d	_____	_____	_____		
Line II		J45.9	_____	_____		

Final UCOD: *G40.9 Epilepsy, unspecified*

Notes and Comments:

Tests the coder's ability to determine causal relationships for application of Selection Rule 1.

Common sense must be used to interpret entries on the death certificate.

See also Volume 2 4.2.2 Highly Improbable (n) accidents reported as due to any other cause except: (1) ...epilepsy (G40-G41)

NCCH



a u s t r a l i a

ANSWERS FOR MODULE 13

Mortality Coding Exercise 2

ICD-10 Codes

Line					TUCOD Rule	Acronym
	1a	N18.9	_____	_____	V89.2	GP
	b	G82.5	_____	_____	Y85.0	Rule F
	c	V89.2	_____	_____		
	d	_____	_____	_____		
Line II		F17.1	F11.2	_____		

Final UCOD: *Y85.0 Sequelae of Motor Vehicle Accident*

Notes and Comments: *Y85.0 Sequelae of Motor Vehicle Accident* selected with **General Principle and Modification Rule F Sequelae**. Consider the “Duration between onset and death”. Does duration affect whether a sequelae code should be assigned?

G40.9 also modifies W19 by application of Rule 1 with TUCOD W19, then Rule 3 DS See Address - - - W19 - - - in Table E.



Chapter VII Diseases of Eye and Adnexa

- ❖ The categories in this chapter range from H00 to H59
- ❖ 47 of the available 60 categories have been used
- ❖ The chapter is divided into 11 blocks
- ❖ There are 12 asterisk categories
- ❖ Additional/optional codes, for H40 to identify the cause of the glaucoma
- ❖ H54 blindness and low vision has a table detailing impairment categories

Chapter VII Diseases of Eye and Adnexa

- ❖ H54 includes table to indicate categories of visual impairment when coding blindness and low vision
- ❖ note that codes are available to indicate whether one or both eyes are affected
- ❖ H40.3, .4, .5 and .6 have *use additional code to identify cause of glaucoma*

Medical terminology review

Diseases of the eye and adnexa

ophthalm/o

eye

opt/o or optic/o

eye, vision

ophthamologist

treats disorders of the eye

optometrist

nonmedical person who examines eyes to determine vision problems and prescribe lenses

optician

nonmedical person who grinds lenses and fits glasses

-opia

vision

diplopia

double vision

myopia

nearsightedness

hyperopia

farsightedness

presbyopia

vision impairment as a result of old age

Medical terminology review

Diseases of the eye and adnexa

Ocul/o	eye	<i>intraocular</i>
Lacrim/o	tears	<i>lacrimation</i>
Dacry/o	tears, tear duct	<i>dacryoadenitis</i>
Blephar/o	eyelid	<i>blepharitis</i>
Corne/o	cornea	<i>corneal ulcer</i>
Kerat/o	cornea	<i>keratitis</i>
Conjunctivitis	inflammation/infection of the conjunctiva	
Cataract	clouding of the lens	
Glaucoma	increased intraocular pressure	
Xanthelasma	raised plaque on eyelid due to lipid deposits	
Retinopathy	diseased state of the retina	

Chapter VII - Diseases of the eye and adnexa

Common Index Lead Terms and modifiers:

Disorder

- optic nerve
- orbit
- vitreous body

Keratitis

Ulcer

- corneal

Diplopia

Disturbance

- visual

Glaucoma

Retinopathy

Blindness

Strabismus

Chapter VII Diseases of Eye and Adnexa Coding Exercises

Complete the Diseases of Eye and Adnexa
Coding Exercises in your workbook

NCCH



a u s t r a l i a

ANSWERS FOR MODULE 14

Chapter VII Diseases of Eye and Adnexa

1. Juvenile cataract **H26.0**

*Note that the Tabular list indicates that
juvenile = infantile = presenile.*

NCCH



a u s t r a l i a

ANSWERS FOR MODULE 14

Chapter VII Diseases of Eye and Adnexa

2. Tuberculous chorioretinitis **A18.5† H32.0 ***

Note: in the Tabular list there are bullet points to indicate the various manifestations of tuberculosis of the eye

ANSWERS FOR MODULE 14
Chapter VII Diseases of Eye and Adnexa

3. Progressive external ophthalmoplegia
H49.4

Note: the Tabular list indicates that this is a form of paralytic strabismus.

ANSWERS FOR MODULE 14

Chapter VII Diseases of Eye and Adnexa

4. Blindness right eye, with concurrent low vision left eye **H54.1**

Note the Table in the Tabular list indicates the levels of visual impairment which are used to determine the appropriate H54.-code.

ANSWERS FOR MODULE 14
Chapter VII Diseases of Eye and Adnexa

5. Removal of foreign body embedded in
cornea **30061-02 [166]**

❖ *Note: did you follow the exclusion note
under code 42644-04 [167]?*

ANSWERS FOR MODULE 14

Chapter VII Diseases of Eye and Adnexa

Summary 1:

MC: **A74.0†** *Chlamydial conjunctivitis*

OC: **H13.1*** *Conjunctivitis in infectious and parasitic diseases classified elsewhere*

ANSWERS FOR MODULE 14

Mortality Coding Exercise 1

ICD-10 Codes

Line		ICD-10 Code	ICD-10 Code	ICD-10 Code	TUCOD Rule	Acronym
1a		A41.9	_____	_____	H10.9	GP
	b	H10.9	_____	_____	H10.9	Rule B
	c	_____	_____	_____		
	d	_____	_____	_____		
Line II		_____	_____	_____		

Final UCOD: *H10.9 Conjunctivitis, unspecified*

Notes and Comments:

TUCOD is H10.9 using the General Principle.

Although a Trivial Condition, listed in Table H, Conjunctivitis (H10.9) is stated as causing the Sepsis (A41.9) and therefore Rule B Trivial conditions is not applied to the certificate.

Chapter VIII Diseases of Ear and Mastoid Process

- ❖ The categories in this chapter range from H60 to H95
- ❖ 24 of the available 36 categories have been used
- ❖ The blocks are divided anatomically: external ear, middle ear and mastoid, and inner ear

IMPORTANT POINTS: MODULE 15

Chapter VIII - Diseases of Ear and Mastoid Process

- ❖ H90-H95 contains codes relating to hearing loss, symptomatic conditions, disorders of the acoustic nerve and post-procedural problems
- ❖ H90 classifies conductive and sensorineural hearing loss by unilateral and bilateral impairment
- ❖ Notes throughout this chapter indicate when to use an additional code (H72.-) to identify perforated tympanic membrane

Chapter VIII - Diseases of Ear and Mastoid Process

Medical Terminology Review

Acous/o	hearing
Audi/o	sense of hearing
Audit/o	hearing
Aur/o	ear
Ot/o	ear
Myring/	ear drum
Tympan/o	tympanic membrane
Ossicul/o	ossicles
Cerumen	wax
Mastoid/o	mastoid process

Chapter VIII - Diseases of Ear and Mastoid Process

Medical Terminology Review

Auricle or pinna	flap of ear
malleus	first ossicle
incus	second ossicle
stapes	third ossicle
Labyrinth	canals of inner ear
Vestibule	central cavity of labyrinth
Cochlea	snail shaped tube of inner ear
Eustachian tube	connects middle ear to pharynx
Oval window	separates inner and middle ear

Chapter VIII - Diseases of Ear and Mastoid Process

Common Index Lead Terms and modifiers:

Otitis

- externa
- interna
- media

Deafness

- conductive
- - and sensorineural

Tympanitis

Myringitis

Mastoiditis

Otosclerosis

Labrynthitis

Vertigo

- auditory
- benign paroxysmal
- otogenic

Loss

- hearing

Chapter VIII Diseases of Ear and the Mastoid Process Coding Exercises

Complete the Diseases of Ear and Mastoid
Process Coding Exercises in your
workbook

NCCH



a u s t r a l i a

ANSWERS FOR MODULE 15
Chapter VIII Diseases of Ear and Mastoid
Process

1. Acute purulent otitis media **H66.0**

Note that you need to go to three levels of indentation to find the correct code in the Index

ANSWERS FOR MODULE 15
Chapter VIII Diseases of Ear and Mastoid
Process

**2. Mixed conductive and sensorineural
hearing loss, bilateral *H90.6***

*Note: the Index directs you from Loss to
Deafness to find the code*

ANSWERS FOR MODULE 15
Chapter VIII Diseases of Ear and Mastoid
Process

3. Glue ear ***H65.3***

ANSWERS FOR MODULE 15
Chapter VIII Diseases of Ear and Mastoid
Process

4. Aspergillosis in otitis externa ***B44.8 † H62.2****

ANSWERS FOR MODULE 15

Chapter VIII Diseases of Ear and Mastoid Process

5. Insertion of Grommets (tympanostomy tubes) 41632-01 [309]

❖ *Note: Grommets are usually inserted in the middle ears of children who suffer from chronic middle ear infections or glue ears*

ANSWERS FOR MODULE 15

Chapter VIII Diseases of Ear and Mastoid Process

Summary 1:

MC: **H73.0** *Acute myringitis*

OC: **B95.3** *Streptococcus pneumoniae as cause of diseases classified to other chapters*

Proc:**41626-00 [309]** *Myringotomy, unilateral*

ANSWERS FOR MODULE 15

Mortality Coding Exercise 1

ICD-10 Codes

Line	1a				TUCOD Rule	Acronym
		H65.3	_____	_____	H65.3	GP
	b	_____	_____	_____		
	c	_____	_____	_____		
	d	_____	_____	_____		
Line II		A41.9	_____	_____		

Final UCOD: *H65.3 Chronic otitis media*

Notes and Comments:

H65.3 Chronic mucoid otitis media selected as TUCOD - only condition listed in Part 1.

Look up Table H - H65.3 is not listed as Trivial Condition. Therefore the UCOD is not reselected.

NCCH



australia

Chapter IX Diseases of the Circulatory system

- ❖ Categories I00 to I99 make up this chapter
- ❖ Of the 100 categories available, 77 have been allocated
- ❖ The chapter is divided into 10 blocks.
- ❖ There are 8 asterisk categories
- ❖ Care should be taken with this chapter because in English the prefix "I" looks like a "1" (one) when written or typed

Chapter IX Diseases of the Circulatory system

- ❖ I05-I09 Rheumatic heart disease
 - ❖ ICD-10 assumes most valvular disorders are rheumatic in origin e.g. I05.0 *Mitral stenosis*
 - ❖ need to be guided by Index and check relevant inclusion and exclusion notes
 - ❖ *Exceptions:* Valvular diseases of the aortic valve (classified to this block only if they are specified as rheumatic)

- ❖ I10-I15 Hypertensive disorders have no distinction between malignant and benign types

Chapter IX Diseases of the Circulatory system

- ❖ I20-I25 guidance for coders in establishing duration of ischaemic heart diseases - differs between morbidity and mortality coding
- ❖ I25.9 *Chronic ischaemic heart disease* is a non-specific code and should only be used if no further information is available

Ischaemic heart disease

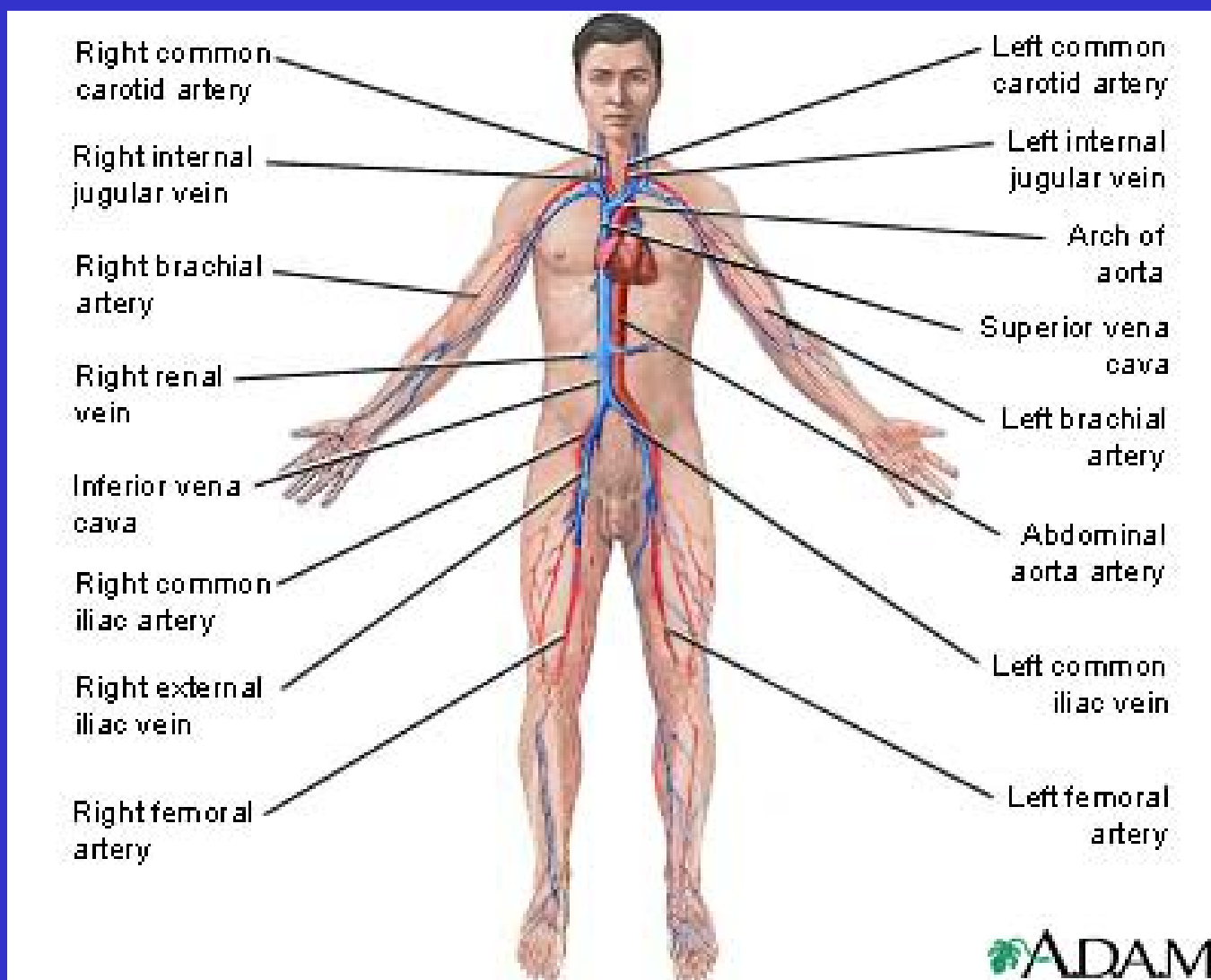
❖ Hypertension

- ❖ I11-I13 codes are used to indicate connection between hypertension and other diseases
- ❖ this block is only used when documentation specifically indicates the relationship

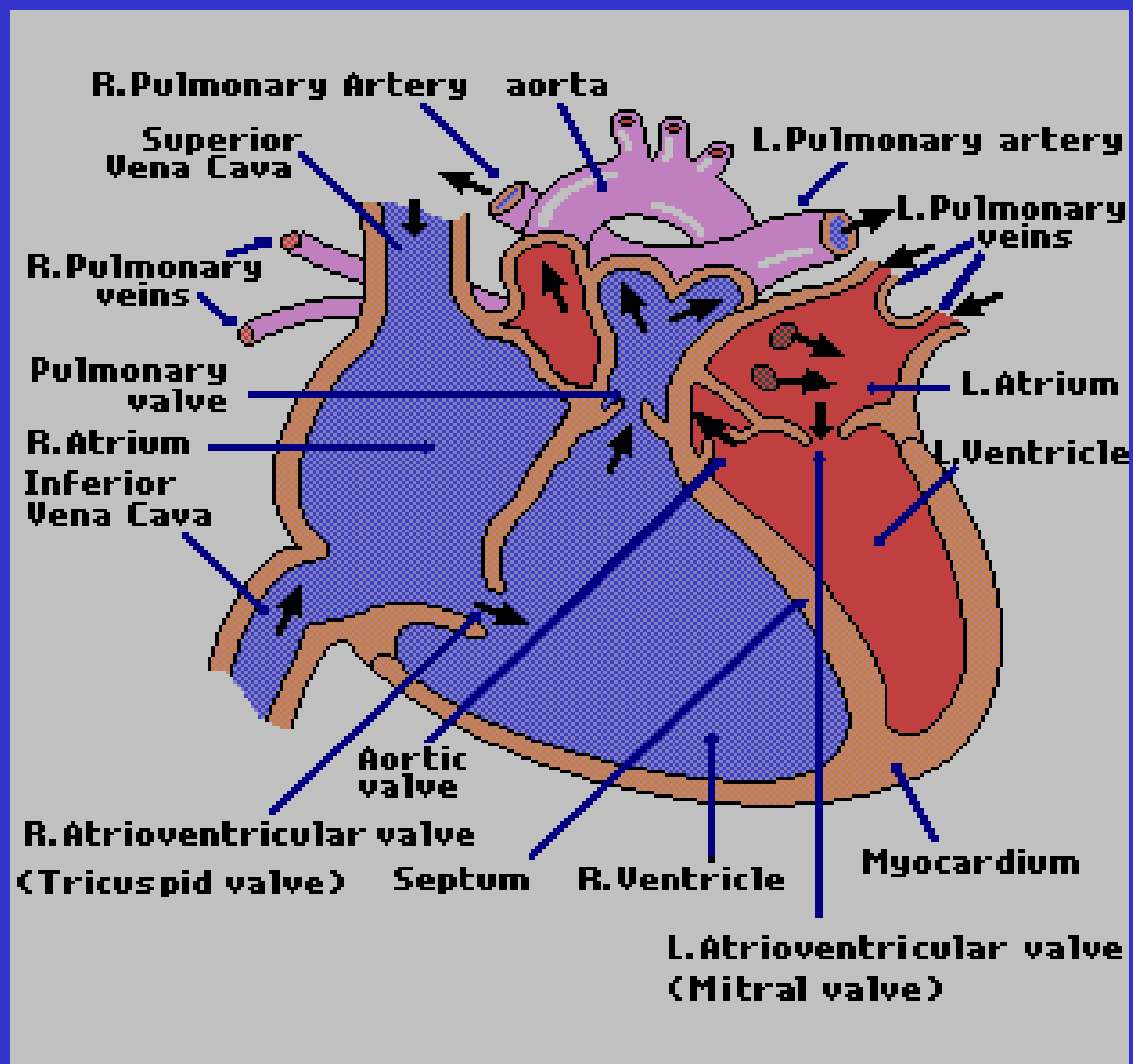
Myocardial infarction

- ❖ Myocardial infarction can be coded to:
 - ❖ I21.- acute MI, with onset within past 28 days
 - ❖ I22.- subsequent MI, a second or third infarction occurring within 28 days of the first one
 - ❖ I25.8 an old MI still causing symptoms or requiring treatment, chronic or with duration >28 days
 - ❖ I25.2 an old MI not having significance to this episode of care, not causing symptoms

The Circulatory System



Circulation of the heart



Chapter IX - Diseases of the Circulatory System

Medical terminology review

Valves of the heart

Inferior and Superior Vena Cava

R. Atrium

Tricuspid

R. Ventricle

R. Ventricle

Pulmonary

P. Artery

Pulmonary artery-Lungs-Pulmonary Vein

L. Atrium

Mitral

L. Ventricle

L. Ventricle

Aortic

Aorta

Chapter IX - Diseases of the Circulatory System

Medical terminology review

Coron/o	heart	Ventricul/o	ventricle
Angi/o	vessel	cardi/o	heart
Aort/o	aorta	ather/o	yellow plaque
Arteri/o	artery	brachi/o	arm
Atri/o	atrium	cholester/o	cholesterol
cyan/o	blue	pericardi/o	pericardium
Myocardi/o	myocardium	AMI	Acute Myocardial Infarction
Ox/o	oxygen	CCF	Congestive Cardiac Failure
Ven/o	vein	CHF	Congestive Heart Failure
Phleb/o	vein	HTN	Hypertension
Sphygm/o	pulse	PVD	Peripheral Vascular Disease
Thromb/o	clot	ECG	Electrocardiogram
Valvul/o	valve	BBB	Bundle Branch Block
Valv/o	valve	CVP	Central Venous Pressure

Chapter IX – Diseases of the circulatory system

Common Index Lead Terms and modifiers:

Infarct, infarction (of)

- myocardium

Occlusion

- artery

- vein

Disease

- heart

Hypertension

Angina

Atherosclerosis

Accident

-cerebrovascular

Hypotension

Varix

Hemorrhoids

Embolism

Thrombosis

Hemorrhage

Cardiomegaly

Endocarditis

NCCH



a u s t r a l i a

MODULE 16
***Chapter IX - Diseases of the Circulatory
System***
Coding Exercises

**Complete the Diseases of the Circulatory
System Coding Exercises in your
workbook**

NCCH



a u s t r a l i a

ANSWERS FOR MODULE 16
Chapter IX - Diseases of the Circulatory System

1. Syphilitic aneurysm of aorta ***A52.0† I79.0****

ANSWERS FOR MODULE 16
***Chapter IX - Diseases of the Circulatory
System***

2. Acute cor pulmonale

I26.0

NCCH



a u s t r a l i a

ANSWERS FOR MODULE 16
***Chapter IX - Diseases of the Circulatory
System***

3. Biventricular failure

150.0

NCCH



a u s t r a l i a

ANSWERS FOR MODULE 16
Chapter IX - Diseases of the Circulatory System

4. Left cardiac catheterisation with angiography of the heart **38218-00 [668]**

NCCH



a u s t r a l i a

ANSWERS FOR MODULE 16
***Chapter IX - Diseases of the Circulatory
System***

5. Strangulated internal haemorrhoids *184.1*

NCCH



a u s t r a l i a

ANSWERS FOR MODULE 16

Chapter IX - Diseases of the Circulatory System

Summary 1:

MC: **I21.4** *Acute subendocardial myocardial infarction*

OC: -

Proc: **11712-00 [1857]** *Cardiovascular stress test*

Summary 2:

MC: **I50.0** *Congestive heart failure*

OC: **I33.0** *Acute and subacute infective endocarditis*

Proc: -

Chapter IX - Diseases of the Circulatory System
Mortality Coding Exercise 1

ICD-10 Codes

Line		ICD-10 Code	ICD-10 Code	TUCOD	Rule	Acronym
1a		I21.9	_____	I25.9	GP	
	b	I25.9	_____	I21.9	Rule C	LMP
	c	_____	_____			
	d	_____	_____			
Line II		F10.2	_____			

Final UCOD: *I21.9 Acute myocardial infarction, unspecified*

Notes and Comments:

- I25.9 is TUCOD using General Principle
- Table E I21.9 listed as LMP
- Table E F102 not listed
- No further modification required
- I21.9 is listed in Table A as a valid UCOD code



ANSWERS FOR MODULE 16
Chapter IX - Diseases of the Circulatory System
Mortality Coding Exercise 2

ICD-10 Codes

Line	1a				TUCOD	Rule	Acronym
		I11.9	_____	_____	I25.9	GP	
	b	I25.9	_____	_____			
	c	_____	_____	_____			
	d	_____	_____	_____			
Line II		_____	_____	_____			

Final UCOD: *I25.9 Chronic ischaemic heart disease, unspecified*

Notes and Comments:

Table D I25.9 as TUCOD General Principle

Table E I119 not listed

No modification required

I25.9 is listed in Table A as a valid UCOD code

NCCH



australia

Chapter X Diseases of the Respiratory System

- ❖ Categories J00 to J99 make up this chapter.
- ❖ Of the 100 categories available, 63 have been allocated
- ❖ The chapter is divided into 10 blocks
- ❖ There are 3 asterisk categories

Chapter X Diseases of the Respiratory System

- ❖ Acute upper respiratory infections (J00-J09) arranged anatomically, from nose down to larynx. When a condition is documented as occurring in more than one respiratory site, and there is not a code for the combination of sites, code to the lowest anatomical site
- ❖ e.g. tracheobronchitis is coded to bronchitis, because the bronchus is a lower anatomical site than the trachea

Chapter X Diseases of the Respiratory System

- ❖ Pleurisy **without** mention of effusion or current tuberculosis is coded to R09.1
- ❖ Pleurisy **with** pleural effusion is coded to J90
- ❖ Abscess of lung with pneumonia, organism unspecified is coded to J85.1. If organism is specified, should be coded to block J10-J16
- ❖ Severe acute respiratory syndrome (SARS) is coded to U04.9

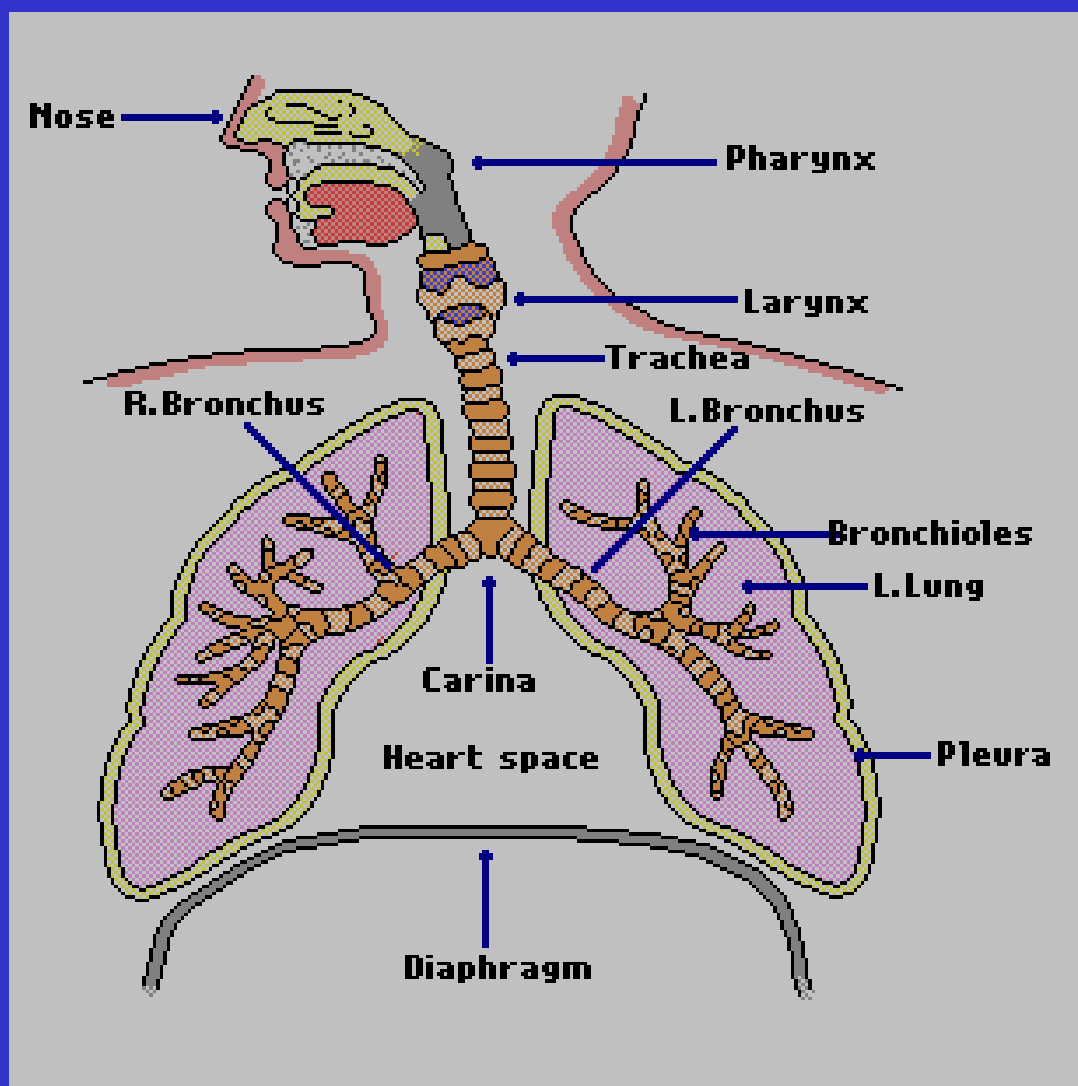
Chronic obstructive pulmonary disease

- ❖ Generally coded in hospital setting to J44.0 or J44.1
- ❖ J44.- is used for cases of:
 - ❖ chronic bronchitis with asthma or emphysema or with airways obstruction
 - ❖ emphysema with chronic bronchitis
 - ❖ asthma with chronic bronchitis or with airways obstruction

Bronchitis

- ❖ Coded to acute if patient under 15 years of age, even if not documented as acute

Anatomy of the Respiratory System



Medical Terminology Review

The respiratory system

Nasal cavity

Cilia

Paranasal sinuses

Pharynx

- nasopharynx
- pharyngeal tonsils
- adenoids
- oropharynx
- palatine tonsils
- laryngopharynx

Epiglottis

Trachea

Bronchus / bronchi

Bronchioles

Alveoli

Diaphragm

Medical Terminology Review

The respiratory system

Pneum/o

Pleur/o

Bronch/o

Mediastinum

Hilum

Inhalation

air flows into lungs

Exhalation

air expelled from lungs

Inspiration

air flows into lungs

Expiration

air expelled from lungs

NCCH



a u s t r a l i a

Chapter X - Diseases of the respiratory system

Common Index Lead Terms and modifiers:

Influenza

Pneumonia

Infection

- respiratory (tract)

- - lower

- - upper

Asthma

Emphysema

Bronchitis

Edema

- pulmonary

Pneumothorax

- spontaneous

- tension

Hemothorax

Effusion

- pleural

Disease

- lung

- respiratory

Pneumoconiosis

Laryngitis

***Module 17 Diseases of the Respiratory
system***
Coding Exercises

**Complete the Diseases of the Respiratory
System Coding Exercises in your
workbook**

NCCH



a u s t r a l i a

MODULE 17 - ANSWERS

Chapter X Diseases of the respiratory system

1. Subglottic edema *J38.4*

MODULE 17 - ANSWERS

Chapter X Diseases of the respiratory system

2. Bronchitis (in a 10 year old female) **J20.9**

Note: As we know this patient is a child we need to look for a modifier that refers to children or ages in the Index.

Did you notice the See instruction?

MODULE 17 - ANSWERS

Chapter X Diseases of the respiratory system

3. Partial pneumonectomy of left lung 38438-00 [551]

❖ *Note: Did you follow the See lobectomy instruction?*

MODULE 17 - ANSWERS
**Chapter X Diseases of the respiratory
system**

**4. Severe Acute Respiratory Syndrome
(SARS) U04.9**

MODULE 17 - ANSWERS
**Chapter X Diseases of the respiratory
system**

5. Nasopharyngeal polyp *J33.0*

MODULE 17 - ANSWERS

Chapter X Diseases of the respiratory system

Summary 1:

MC: **J05.0** *Acute obstructive laryngitis [Croup]*

OC: **J45.9** *Asthma, unspecified*

J06.8 *Other acute upper respiratory infections of multiple sites*

Summary 2:

MC: **J18.0** *Bronchopneumonia, unspecified*

OC: **J90** *Pleural effusion, NEC*

MODULE 17 - ANSWERS

Mortality Coding Exercise 1

187

ICD-10 Codes

Line	1a	J40	_____	_____	TUCOD Rule	Acronym
	b	J43.9	_____	_____	J44.9	GP
	c	J44.9	_____	_____	J44.8	Rule C LMC
	d	_____	_____	_____		
 	Line II	I73.9	_____	_____		

Final UCOD: *J44.8 Other specified chronic obstructive pulmonary disease*

Notes and Comments:

J44.9 is TUCOD with General Principle

Table E both J40 and J43.9 (J40 – J43.9) listed LMC J44.8.

Table E Address ---J44.8---, I73.9 not listed

No further modification is required.

J44.8 is listed in Table A as a valid UCOD code

NCCH



a u s t r a l i a

MODULE 17 – ANSWERS

Mortality Coding Exercises

ICD-10 Codes

Line	1a	1b	1c	1d	TUCOD	Rule	Acronym
	J18.2	_____	_____		G81.9	GP	
	G81.9	_____	_____		I64	Rule 3	DS
	_____	_____	_____		I69.4	Rule F	Sequela
	_____	_____	_____				
Line II	I64	_____	_____				

Final UCOD: *I69.4 Sequelae of stroke not specified as haemorrhage or infarction*

Notes and Comments:

G81.9 is TUCOD with General Principle

Table E Address ---G819---, J182 not listed.

I64 (I600 – I698) listed DS

Table E Address ---I64---

Exclusion note in Tabular list – consider duration

Rule F sequelae – I69.4



Chapter XI Diseases of the Digestive System

- ❖ Categories K00 to K93 comprise this chapter
- ❖ 71 of the available 94 categories have been used
- ❖ The chapter is divided into 10 blocks
- ❖ The codes in the range of K00 to K63 are arranged anatomically from mouth to anus, except for block K40-K46 (Hernias)

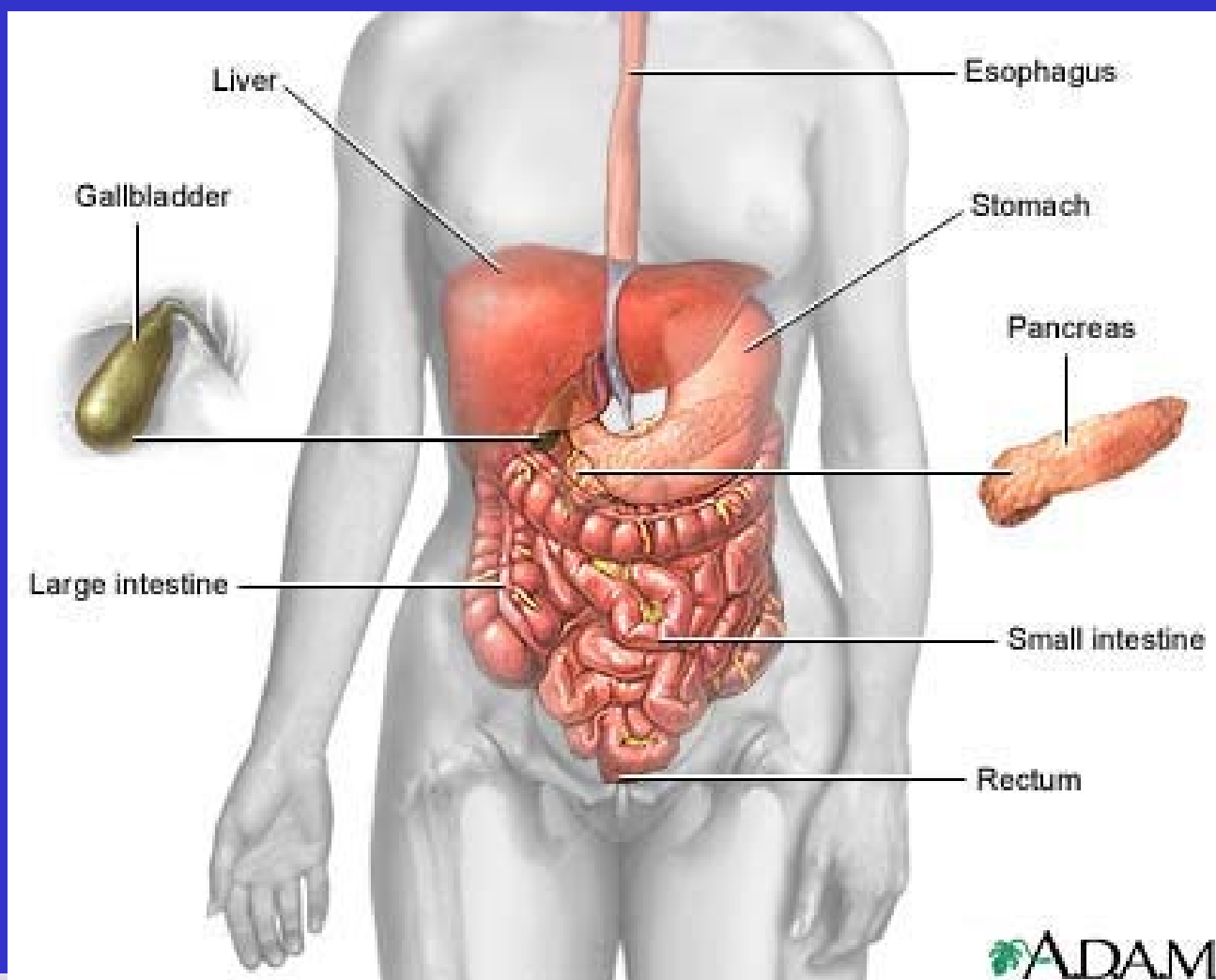
Chapter XI Diseases of the Digestive System

- ❖ Block K25-K29 has a fourth character subdivision to identify if haemorrhage or perforation occurred
- ❖ Block K40-K46 specifies the outcome of obstruction at 4th character level
- ❖ Block K57 Diverticular disease of the intestine includes diverticulosis, diverticulum and diverticulitis. The fourth character is used for specifying perforation or abscess

Chapter XI Diseases of the Digestive System

- ❖ Gastroenteritis - coded to this chapter if specified as non-infectious, but to Chapter I if documented as infectious
- ❖ if infectious/non-infectious status is not documented, assumption based on likelihood that infection is cause of disease (i.e. is gastroenteritis as a result of infection endemic in this country?)

The Digestive system



Chapter XI Diseases of the Digestive system

Common Index Lead Terms and modifiers:

Gastroenteritis

Diarrhoea

Diverticulitis

Peritonitis

Obstruction

- gallbladder

- intestine

- - large

- - small

Cholecystitis

Cirrhosis

Malabsorption

Pancreatitis

Hepatitis

- bacterial

- viral

- - type

- - - B

- - - C

Calculus

- gallbladder

Hernia

NCCH



a u s t r a l i a

Module 18 Diseases of the Digestive System

Coding Exercises

Complete the Diseases of the Digestive System Coding Exercises in your workbook

NCCH



a u s t r a l i a

MODULE 18 - ANSWERS

Chapter XI Diseases of the digestive system

1. Left hemicolectomy 32006-00 [913]

MODULE 18 - ANSWERS
Chapter XI Diseases of the digestive system

2. Chronic gastrojejunal ulcer ***K28.7***

MODULE 18 - ANSWERS
Chapter XI Diseases of the digestive system

3. Obstructed left inguinal hernia **K40.3**

Note that as the hernia is specified as on the left side only, the unilateral code is the appropriate one.

MODULE 18 - ANSWERS

Chapter XI Diseases of the digestive system

4. Diverticulitis of jejunum and ileum with perforation **K57.0**

Note: we need to follow the See also instruction under Diverticulitis, ileum and Diverticulitis, jejunum to find the code to cover both small intestine and perforation

MODULE 18 - ANSWERS

Chapter XI Diseases of the digestive system

5. Postgastrectomy dumping syndrome **K91.1**

Note: this is a post procedural disorder but is found in the body system chapter because it is directly related to the absence of an organ in the gastrointestinal system

MODULE 18 - ANSWERS

Chapter XI Diseases of the digestive system

Summary 1:

- MC: **K80.5** *Calculus of bile duct without cholangitis or cholecystitis*
OC: -
Proc: **30443-00 [965]** *Cholecystectomy*
30439-00 [957] *Operative cholangiogram*

Summary 2:

- MC: **K50.0** *Crohn's disease of small intestine*
OC: **K61.0** *Anal abscess*
Proc: **30566-00 [895]** *Resection of small intestine with anastomosis*
32090-00 [905] *Fibreoptic colonoscopy to caecum*
32174-01 [930] *Drainage of perianal abscess*

**Chapter XI Diseases of the Digestive system
Mortality Coding Exercise 1**

ICD-10 Codes

					TUCOD	Rule	Acronym
Line	1a	K92.2	_____	_____	F10.2	GP	
	b	K74.6	_____	_____	K70.3	Rule D	SDC
	c	F10.2	_____	_____			
	d	_____	_____	_____			
Line II		_____	_____	_____			

Final UCOD: *K70.3 Alcoholic cirrhosis of liver*

Notes and Comments:

F10.2 is TUCOD with General Principle

Table E Address ---F102---, K922 not listed. K746 is listed SDC K703

F10.2 and K74.6 are in the Due to position in Part 1 of the certificate

We can therefore make the modification

K70.3 is listed in Table A as a valid UCOD code



MODULE 18 - ANSWERS
Chapter XI Diseases of the Digestive system
Mortality Coding Exercise 2

ICD-10 Codes

Line		ICD-10 Code	ICD-10 Code	ICD-10 Code	TUCOD	Rule	Acronym
Line I	1a	K92.2	_____	_____	K26.5	GP	
	b	K26.5	_____	_____	K26.5	Rule C	LMC
	c	_____	_____	_____			
	d	_____	_____	_____			
Line II		_____	_____	_____			

Final UCOD: *K26.6 Duodenal ulcer, chronic or unspecified with both haemorrhage and perforation.*

Notes and Comments:

K26.5 is TUCOD General Principle.

Table E Address ---K26.5---, K922 listed LMC K26.6

K26.6 is listed in Table A as a valid UCOD code

Chapter XII - Diseases of the Skin and Subcutaneous Tissue

- ❖ Categories range from L00 to L99
- ❖ 72 of the 100 available categories have been allocated
- ❖ There are 10 exclusions listed at the start of the chapter
- ❖ 8 of the exclusions listed are at chapter level, 1 at block level and 1 at code level
- ❖ There are 8 blocks

IMPORTANT POINTS: MODULE 19 cont...

- ❖ There are 6 asterisk categories
- ❖ This chapter has many exclusions and inclusions
- ❖ The exclusions always have the cross references stated in brackets
- ❖ The terms dermatitis and eczema are used synonymously and interchangeably
- ❖ Contact dermatitis classified as allergic, irritant or unspecified

IMPORTANT POINTS: MODULE 19 cont...

- ❖ L55 sunburn is classified according to the depth of skin which is affected:
 - ❖ First degree/erythema - affecting epidermis only
 - ❖ Second degree/partial thickness - affecting both epidermis and dermis causing possible blistering
 - ❖ Third degree/ full thickness - affecting epidermis, dermis and subcutaneous layers, usually causing extensive damage

Chapter XII – Diseases of the Skin and Subcutaneous Tissue

Common Index Lead Terms and modifiers:

Dermatitis

- allergic

- contact

Infection

Cellulitis

Eczema

Urticaria

Erythema

Psoriasis

Keratosis

Alopecia

Paronychia

Folliculitis

Leukoderma

Granulomatosis

Ulcer

- decubitus

Vitiligo

Acne

Cyst

Module 19 Diseases of the Skin and Subcutaneous Tissue Coding Exercises

Complete the Diseases of the Skin &
Subcutaneous Tissue Coding Exercises in
your workbook

NCCH



a u s t r a l i a

MODULE 19 - ANSWERS
**Chapter XII Diseases of the skin and
subcutaneous tissue**

1. Trichorrhexis invaginata *L67.0*

MODULE 19 - ANSWERS

Chapter XII Diseases of the skin and subcutaneous tissue

2. Drug induced androgenic alopecia **L64.0**

Did you see the note under L64.0 to use an external cause code to identify the drug if known? You would identify the appropriate code by using the Table of drugs and chemicals in the Index.

MODULE 19 - ANSWERS
**Chapter XII Diseases of the skin and
subcutaneous tissue**

3. Contact dermatitis due to cosmetics **L25.0**

*Note: follow the See also note in the Index for
the most specific code*

MODULE 19 - ANSWERS
**Chapter XII Diseases of the skin and
subcutaneous tissue**

4. Arthropathic psoriasis *L40.5† M07.3**

MODULE 19 - ANSWERS
**Chapter XII Diseases of the skin and
subcutaneous tissue**

5. Phototherapy for newborn baby

90677-00 [1611]

MODULE 19 - ANSWERS

Chapter XII Diseases of the skin and subcutaneous tissue

Summary 1:

MC: **C44.3** *Other malignant neoplasm of other and unspecified parts of face*

OC: **M8090/3** *Basal cell carcinoma*

C44.0 *Other malignant neoplasm of skin of lip*

M8070/3 *Squamous cell carcinoma*

C44.6 *Other malignant neoplasm of upper limb*

M8070/3 *Squamous cell carcinoma*

E11.9 *Non insulin dependent diabetes mellitus*

Proc: **31230-01[1620]** *Excision lesion of skin of nose*

45451-01[1649] *Full thickness skin graft of nose*

31235-00 [1620] *Excision lesion of skin of other site head*

31205-00 [1620] *Excision lesion of skin of other site*

MODULE 19 - ANSWERS

Chapter XII Diseases of the skin and subcutaneous tissue

Summary 2:

- MC: **S81.8** *Open wound of other parts of lower leg*
- OC: **T79.3** *Post-traumatic wound infection NEC*
B95.6 *Staphylococcus aureus as cause of diseases classified to other chapters*
R02 *Gangrene, NEC*
V27.00 *Motorcycle rider injured in collision with fixed or stationary object, driver injured in non-traffic accident while engaged in sports activity*
- Proc: **30223-01[1606]** *Incision & drainage abscess of skin*
30064-00 [1605] *Removal of foreign body from skin with incision*
90665-00 [1628] *Excisional debridement of skin*
45442-00 [1646] *Extensive split skin graft of any site*

Chapter XII - Diseases of the Skin and Subcutaneous Tissue
Mortality Coding Exercise 1

ICD-10 Codes

Line	1a				TUCOD	Rule	Acronym
		J18.9	_____	_____	J18.9	GP	
	b	_____	_____	_____	C84.5	Rule 3	DS
	c	_____	_____	_____			
	d	_____	_____	_____			
Line II		C84.5	_____	_____			

Final UCOD: *C84.5 Other and unspecified T-cell lymphomas*

Notes and Comments:

J18.9 is TUCOD, only condition in Part 1 of the certificate

Table E Address ---J189---, C845 is listed DS

C84.5 I listed in Table A as a valid UCOD code



Chapter XII - Diseases of the Skin and Subcutaneous Tissue
Mortality Coding Exercise 2

ICD-10 Codes

					TUCOD Rule	Acronym
Line	1a	M32.9	_____	_____	M32.9	GP
	b	_____	_____	_____		
	c	_____	_____	_____		
	d	_____	_____	_____		
Line II		F10.2	_____	_____		

Final UCOD: *M32.9 Systemic lupus erythematosus, unspecified*

Notes and Comments:

Select M32.9 as TUCOD - only condition listed in Part 1 of the certificate
 Table E Address ---M329---, F10.2 is not listed, no modification required
 M32.9 is listed in Table A as a valid UCOD code



Chapter XIII Diseases of Musculoskeletal and Connective Tissue

- ❖ Categories range from M00 to M99
- ❖ 79 of the 100 available categories have been allocated
- ❖ 12 of the categories have asterisk codes
- ❖ The Site of Musculoskeletal Involvement is an additional optional subclassification (located at the beginning of the chapter)

Chapter XIII Diseases of Musculoskeletal and Connective Tissue

- ❖ Site of Musculoskeletal Involvement
 - ❖ optional additional character to identify part of musculoskeletal system that is affected (?used in 5th character position)
 - ❖ note [*see site code*] suggests when use of this subclassification is appropriate

Chapter XIII Diseases of Musculoskeletal and Connective Tissue

- ❖ In addition to the specified sites, the other optional subclassifications are:
 - ❖ .8 for other specified site
 - ❖ .9 for unspecified site
 - ❖ .0 for multiple sites

- ❖ Supplementary classifications for optional use are also given at M23, M40-M54 and M99

Chapter XIII Diseases of Musculoskeletal and Connective Tissue

- ❖ **M15-M19 Arthrosis.** This term is synonymous with osteoarthritis and osteoarthrosis
- ❖ **M00-M03** makes the distinction between causes (direct or indirect aetiological relationship)

Direct and indirect infections

- ❖ **Direct infection** occurs when infective organisms invade synovial tissue and microbial antigens are found in the joint
- ❖ **Indirect infection** is coded when microbial infection of the body is found but there are not organisms or antigens in the joint (reactive arthropathy), OR where there are microbial antigens present but a specific organism cannot be identified (post-infective arthropathy)

Pathological fractures

- ❖ Fractures as a result of trauma are coded to Chapter XIX but fractures which occur **spontaneously** or as a result of minor trauma in association with **disease of the bone**, are coded to Chapter XIII
 - ❖ M80 *Osteoporosis with pathological fracture*
 - ❖ M84.4 *Pathological fracture NEC*
 - ❖ M90.7 *Fracture of bone in neoplastic disease*

Chapter XIII – Diseases of the Musculoskeletal System and Connective Tissue

Common Index Lead Terms and modifiers:

Tear

- cartilage
- - articular, old

Arthritis

Arthropathy

Gout

Scoliosis

Gonarthrosis

Coxarthrosis

Derangement

Osteoporosis

Spondylosis

Disorder

- joint
- meniscus
- muscle

Synovitis

Tenosynovitis

Bursitis

Myalgia

Rheumatism

**Tendinitis,
tendonitis**

Module 20 Diseases of the Musculoskeletal System & Connective Tissue Coding Exercises

Complete the Musculoskeletal System & Connective Tissue Coding Exercises in your workbook

NCCH



a u s t r a l i a

MODULE 20 - ANSWERS

Chapter XIII Diseases of the musculoskeletal system & connective tissue

1. Rubella arthritis

B06.8†, M01.49*

Did you see the Note at the beginning of the M01 block which directs the coder to use a additional character to indicate the site?

MODULE 20 - ANSWERS
**Chapter XIII Diseases of the musculoskeletal
system & connective tissue**

2. Gout of the big toe **M10.97**

*Note: this one needs an additional character
for the site too*

MODULE 20 - ANSWERS
**Chapter XIII Diseases of the musculoskeletal
system & connective tissue**

3. Bilateral post-traumatic coxarthrosis *M16.4*

MODULE 20 - ANSWERS
**Chapter XIII Diseases of the musculoskeletal
system & connective tissue**

4. Closed reduction of shaft of humerus
47447-00 [1413]

MODULE 20 - ANSWERS
**Chapter XIII Diseases of the musculoskeletal
system & connective tissue**

5. Tuberculous arthritis **A18.0†, M01.19***

*Refer to M01.1 in the Tabular List for the
note which directs the coder to use a site
code*

MODULE 20 - ANSWERS

Chapter XIII Diseases of the musculoskeletal system & connective tissue

Summary 1:

MC: **S83.2** *Tear of meniscus, current*

OC: **X59.90** *Exposure to unspecified factor, unspecified place of occurrence, while engaged in sports activity*

Proc: **49560-03 [1503]** *Arthroscopic meniscectomy of knee*

Summary 2:

MC: **M17.9** *Gonarthrosis, unspecified*

OC: **I95.1** *Orthostatic hypotension*

231

Chapter XIII – Diseases of the Musculoskeletal System and Connective Tissue

Mortality Coding Exercise 1

ICD-10 Codes

Line	1a	M84.45	_____	_____	TUCOD Rule	Acronym
	b	H54.7	_____	_____	M85.45 Rule 2	
	c	R53	F03.9	M81.99	M80.95 Rule C	LMC
	d	_____	_____	_____		
 	Line II	I95.1	_____	_____		

Final UCOD: *M80.95 Unspecified osteoporosis with pathological fracture, femur*

Notes and Comments:

General Principle - Does not apply. Go to Rule 1

Table D Address ---M844---, H54.7 not listed, therefore no sequence

Go to Rule 2 TUCOD is M84.45

**Table E Address ---M844---: H54.7, R53, F03.9 not listed. M81.9(9) listed LMC
M84.4(5) mentioned with M81.9(9) = M80.9(5). Look up Table E Address ---M80.9-
--, H54.7, R53, F03.9 not listed. No further modification required. M80.9(5) is
listed in Table A as valid code.**

Chapter XIII – Diseases of the Musculoskeletal System and Connective Tissue ²³²

Mortality Coding Exercise 2

ICD-10 Codes

Line	1a	R02	I73.9	_____	TUCOD Rule	Acronym
	b	_____	_____	_____	R02 Rule 2	
Line II		_____	_____	_____	I73.9 Rule 3	DS

Final UCOD: *I73.9 Peripheral Vascular disease, unspecified*

Notes and Comments:

General Principle – No single condition listed on the lowest used line of Part 1

Go to Rule 1 – No sequences

Go to Rule 2 – Select the first mentioned condition, R02 is TUCOD

Table E Address ---R02---, I73.9 (I73.0 – I73.9) is listed DS (Direct Sequel)

I73.9 is listed in Table A as a valid UCOD code

R02 is also an Ill-defined condition so we could also apply Rule A Senility and Ill-defined Conditions and re-select the UCOD as though the Ill-defined condition were not listed on the certificate

NCCH



australia

233

Chapter XIII – Diseases of the Musculoskeletal System and Connective Tissue

Mortality Coding Exercise 2

ICD-10 Codes

Line	1a	R02	_____	_____	TUCOD Rule	Acronym
					I73.9	GP
	b	I73.9	_____	_____		
Line II			_____	_____		

Final UCOD: *I73.9 Peripheral Vascular disease, unspecified*

Notes and Comments: There is yet another approach to code this certificate. As the Gangrene is documented as “DUE TO” the PVD on line 1a, we can apply the selection and modification rules as though they were actually coded in the due to position Gangrene on Line 1a and PVD on Line 1b as above. Here the General Principle would apply.

The selection and modification rules are designed to get the “best” UCOD when the medical certificate of cause of death has not been completed correctly.

Chapter XIV - Diseases of the Genitourinary System

- ❖ **Categories range from N00 to N99**
- ❖ **82 of the 100 available categories have been allocated**
- ❖ **9 of the categories have asterisk codes**
- ❖ **Chapter XVI has 8 exclusions listed at chapter level**
- ❖ **There are 11 blocks**

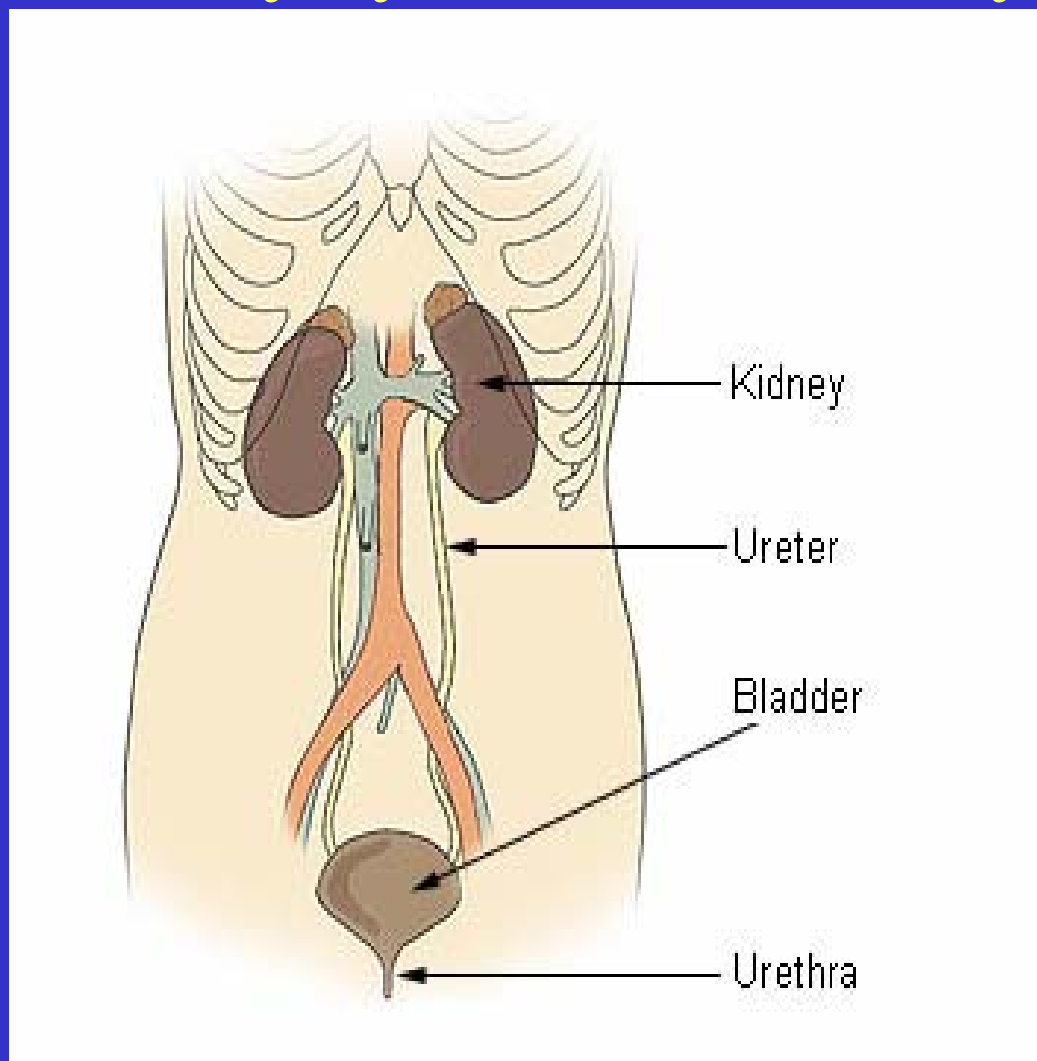
Chapter XIV - Diseases of the Genitourinary System

- ❖ **An additional code from N17-N19 Renal Failure can be used to identify the presence of renal failure in other diseases**
- ❖ **N00-N08 three character categories relate to syndromes and fourth character to morphological changes**
- ❖ **Dysplasia of the cervix, vagina and vulva are classified by severity in categories N87, N89 and N90**

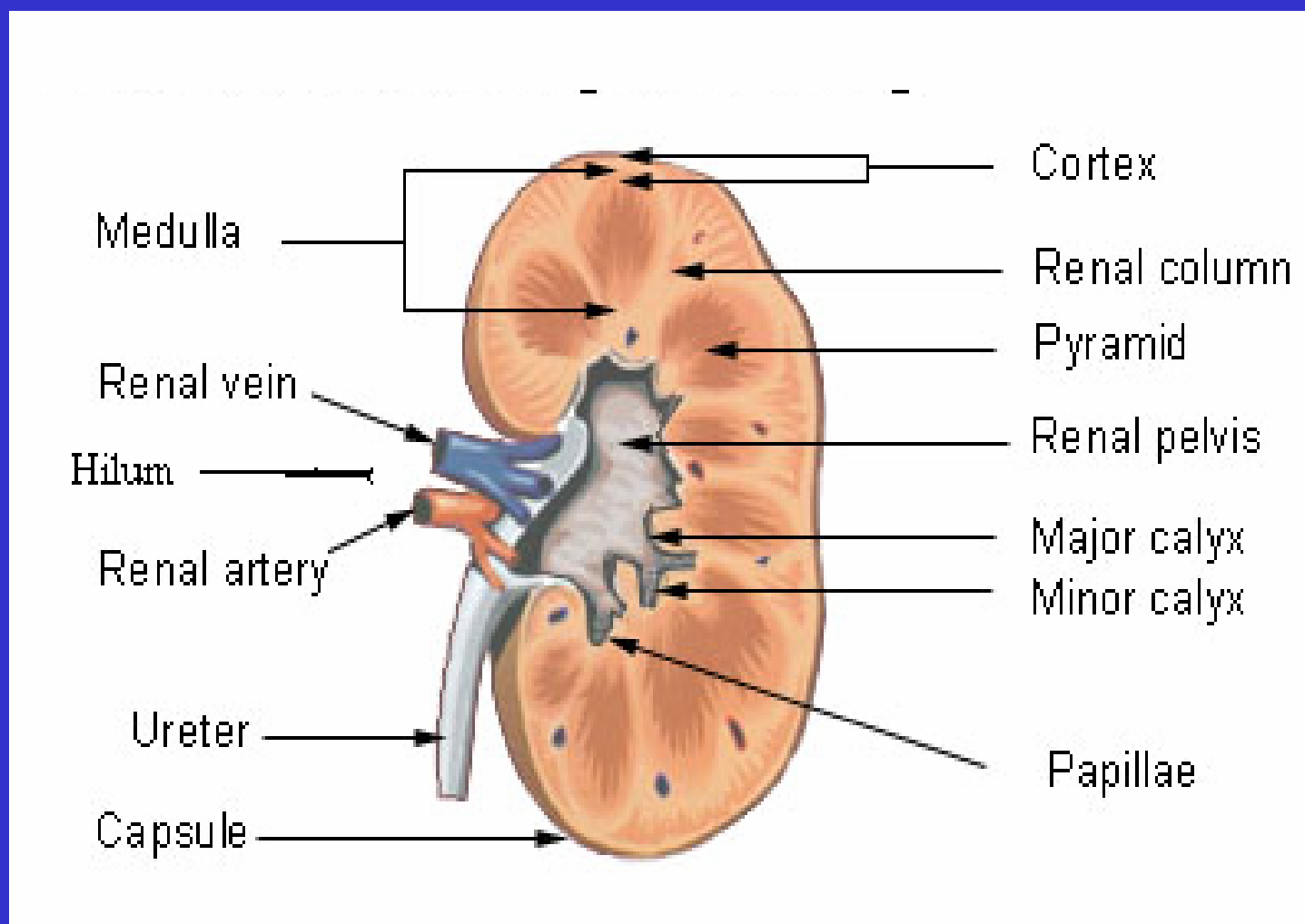
Dysplasia in the female reproductive system CIN, VIN and VAIN

- ❖ CIN, VIN and VAIN = intraepithelial neoplasia of the cervix, vulva and vagina
- ❖ graded as I, II or III or described as Mild, Moderate or Severe
 - ❖ Grade I = Mild dysplasia
 - ❖ Grade II = Moderate dysplasia
 - ❖ Grade III = Severe dysplasia or Carcinoma in situ and is coded to Chapter II Neoplasms

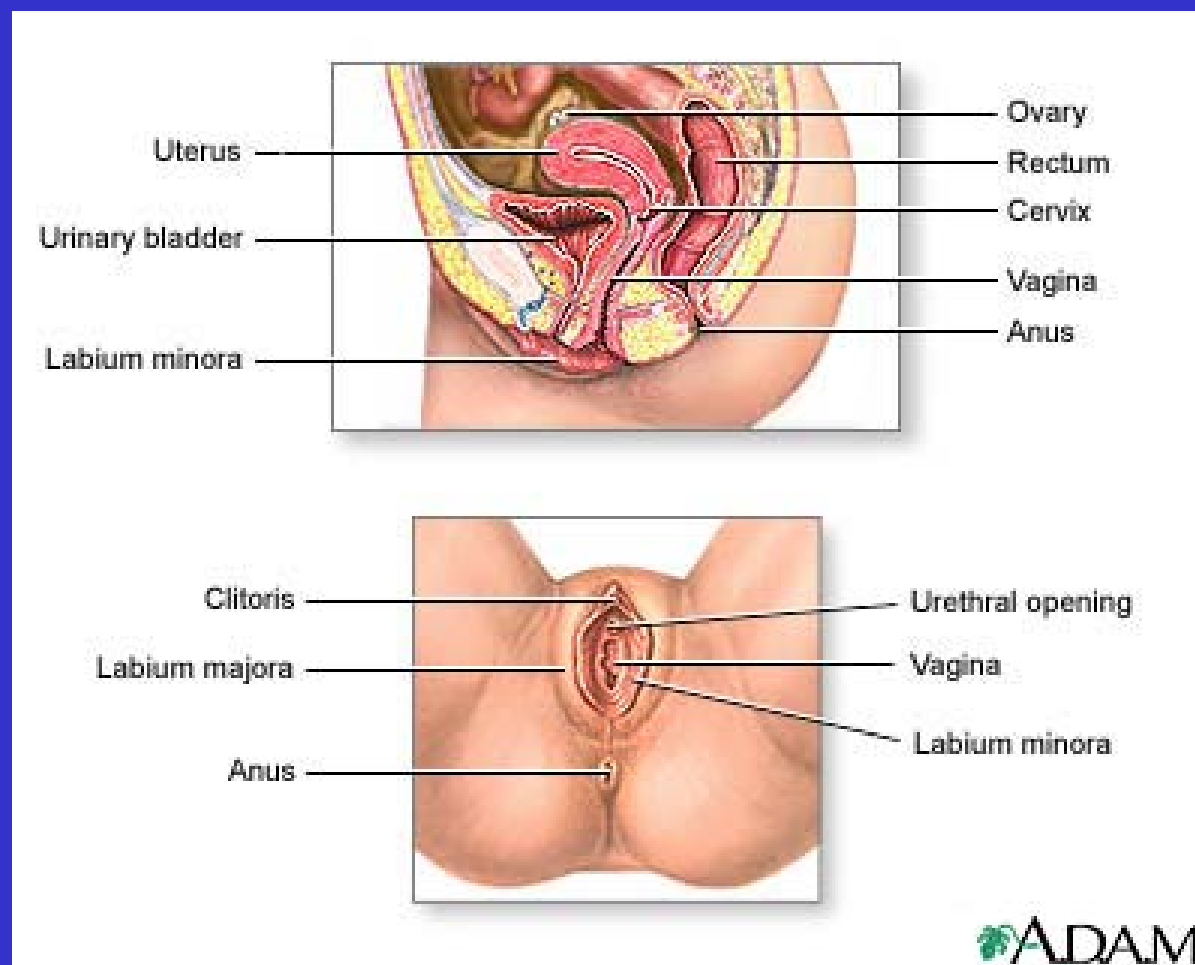
Urinary system - Anatomy



Kidney - Anatomy



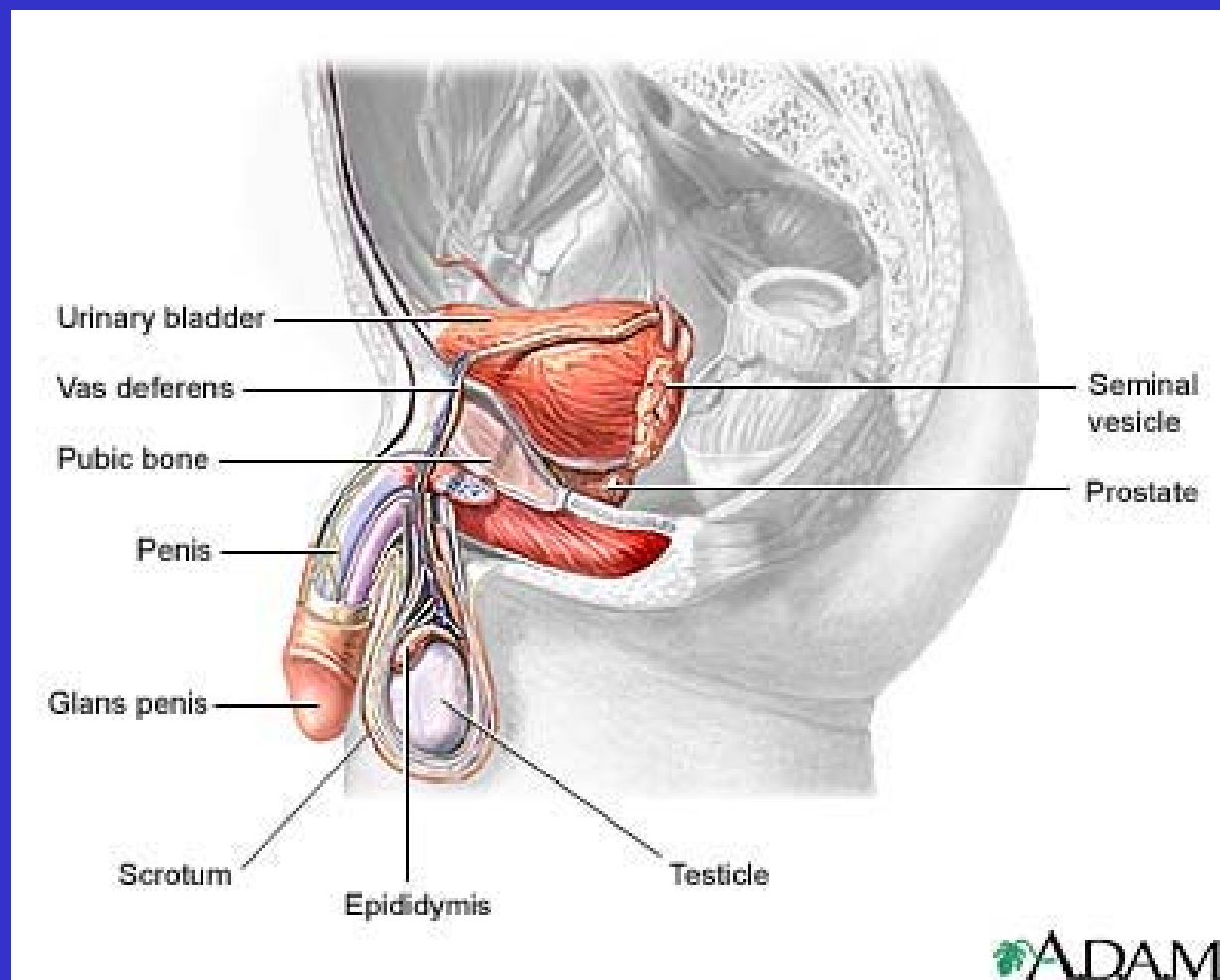
Female reproductive system



Female reproductive system - Terminology review

- ❖ Ovaries (oophor/o), ovarian, follicles, corpus luteum, ovum
- ❖ Fimbriae, Fallopian tubes (salping/o)
- ❖ Uterus, adnexa, endometrium, umbilicus, amniotic, menses, placenta
- ❖ Cervix, Bartholin's glands
- ❖ Vagina, vulva, perineum, labia, hymen, colp/o
- ❖ Mammary, areola, lactiferous, galact/o
- ❖ Gravidum

Male reproductive anatomy



Male reproductive system - Terminology review

- ❖ Testicles (orchid/o), Gonads, Testosterone, Seminal vesicles, Ejaculation, Semen, Flagellum
- ❖ Scrotum, Prostate, Bulbourethral glands
- ❖ Spermatozoa, Seminiferous tubules, Epididymis, Vas Deferens, Ejaculatory duct, Urethra, Penis
- ❖ Penis, prepuce (foreskin), glans penis
- ❖ Vasectomy, Circumcision

Genitourinary system - Abbreviations

UTI	Urinary tract Infection
ESRD	End stage renal disease
ESWL	Extra corporeal shock wave lithotripsy
ARF	Acute renal failure
CRF	Chronic renal failure
CAPD	Continuous ambulatory peritoneal dialysis
DUB	Dysfunctional uterine bleeding
ERT	Oestrogen replacement therapy
FSH	Follicle stimulating hormone
GYN	Gynaecology
ECC	Endocervical curettage
D&C	Dilation (dilatation) and Curettage
C section	Caesarean section
BPH	Benign prostatic hyperplasia / hypertrophy
HSV	Herpes simplex virus
DRE	Digital rectal examination
TURP	Transurethral resection of prostate
GU	Genitourinary

Chapter XIV Diseases of the Genitourinary System

Common Index Lead Terms and modifiers:

Failure

- renal

Syndrome

- nephritic

Nephritis

Hydronephrosis

Hematuria

Hydroureter

Stricture

Endometriosis

Fistula

Malposition

- uterus

Orchitis

Cystitis

Epididymitis

Calculus

Trigonitis

NCCH



a u s t r a l i a

***Chapter XIV Diseases of the Genitourinary
system***
Coding Exercises

**Complete the Diseases of the
Genitourinary System Coding Exercises in
your workbook**

NCCH



a u s t r a l i a

MODULE 21 - ANSWERS
**Chapter XIV Diseases of the genitourinary
system**

1. Renal tubulo-interstitial disorder due to
brucellosis **A23.9† N16.0***

MODULE 21 - ANSWERS

Chapter XIV Diseases of the genitourinary system

2. Acute diffuse membranous glomerulonephritis **N00.2**

Note: the Index directs you to block N00-N07 and states that the coder should use a fourth character of .2. Acute glomerulonephritis is an inclusion term under N00.-

MODULE 21 - ANSWERS
Chapter XIV Diseases of the genitourinary system

3. Acute cystitis with urolithiasis *N20.9*

*Note: did you see the exclusion note
under the block heading at B20-B23?*

MODULE 21 - ANSWERS
**Chapter XIV Diseases of the genitourinary
system**

4. Incomplete uterovaginal prolapse *N81.2*

MODULE 21 - ANSWERS
**Chapter XIV Diseases of the genitourinary
system**

5. Transurethral resection of prostate

37203-00 [1165]

MODULE 21 - ANSWERS

Chapter XIV Diseases of the genitourinary system

Summary 1:

MC: **N30.2** *Other chronic cystitis*

OC: **E10.9** *Insulin dependent diabetes mellitus*

Proc: -

Summary 2:

MC: **N39.0** *Urinary tract infection, site not specified*

OC: **B96.4** *Proteus mirabilis as cause of disease classified to other Chapters*

Proc: -

Chapter XIV Diseases of the genitourinary system

Mortality Coding Exercise 1

ICD-10 Codes

Line	1a	N19	_____	_____	TUCOD Rule	Acronym
	b	N17.9	N18.9	_____	N39.0	Rule 1
	c	N39.0	D64.9	_____		
	d	_____	_____	_____		
Line II		_____	_____	_____		

Final UCOD: *N39.0 Urinary tract infection, site not specified*

Notes and Comments:

General Principle – Does not apply. Go to Rule 1.

More than one sequence terminates in the condition first mentioned.

Select the first mentioned sequence - N39.0 is TUCOD using Rule 1.

Table E Address ---N390---, no modification required.

N39.0 is listed in Table A as a valid UCOD code.



Chapter XIV Diseases of the genitourinary system

Mortality Coding Exercise 2

ICD-10 Codes

Line	1a	N17.9	N18.9	_____	TUCOD Rule	Acronym
	b	R57.0	_____	_____	N39.0	GP
	c	A41.9	_____	_____		
	d	N39.0	_____	_____		
Line II		_____	_____	_____		

Final UCOD: *N39.0 Urinary tract infection, site not specified*

Notes and Comments:

General Principle

N39.0 is TUCOD using the General Principle.

Table E Address N39.0, no modification required.

N39.0 is listed in Table A as a valid UCOD code.



Chapter XV – Pregnancy, Childbirth and the Puerperium

IMPORTANT POINTS: MODULE 22

- ❖ *In the English language version, coders should be very careful in distinguishing “O” from “0” in this chapter*
- ❖ Categories range from O00 to O99
- ❖ 75 of the 100 available categories have been allocated
- ❖ There are 8 exclusions

Chapter XV Pregnancy, Childbirth and the Puerperium

- ❖ ICD-10 special diseases chapter - codes in this chapter take **precedence over body system chapters**
- ❖ if a condition that is normally coded to another chapter occurs in a pregnant patient or is exacerbated by pregnancy, use a code from Chapter XV
- ❖ the code from another chapter may be added as a other condition to improve specificity

Pregnancy with abortive outcome (O00-008)

- ❖ O03-006
 - ❖ spontaneous or induced abortions
 - ❖ complete or incomplete
 - ❖ with or without complications
- ❖ O07
 - ❖ failed induced abortions
 - ❖ with or without complications
- ❖ O08
 - ❖ complications following abortion and ectopic or molar pregnancy - usually secondary diagnoses unless subsequent admission

Diagnoses in pregnancy

- ❖ O10-O16 - hypertensive disorders in pregnancy, pre-existing or gestational
- ❖ O20-O29 - common conditions which arise as problems during pregnancy - if condition is not specifically indexed, use O98 or O99 with code from elsewhere in classification as other condition

Maternal care relating to fetus and amniotic cavity (O30-O48)

- ❖ multiple gestation
- ❖ malpresentation of fetus
- ❖ disproportion
- ❖ abnormality of pelvic organs
- ❖ fetal abnormalities
- ❖ disorders of amniotic fluid, membranes, placenta
- ❖ false labour
- ❖ prolonged pregnancy (>42 weeks)

Delivery (O80-O84)

- ❖ Codes are only used as main diagnosis when **no other diagnosis classifiable to Chapter XV** is present
- ❖ may be used as other condition to indicate type and method of delivery if this detail is not captured by procedure codes

Outcome of delivery

- ❖ If you are multiple coding, Z37.- should always appear on mother's delivery record to indicate single or multiple birth with child or children born alive or stillborn

Chapter XV – Pregnancy, Childbirth and the Puerperium

IMPORTANT POINTS: MODULE 22

- ❖ **O85-O92 covers puerperium, includes problems with lactation**
- ❖ **O95-O99 – other obstetric conditions, including maternal death**
- ❖ **There are time limits associated with O96 and O97**
- ❖ **Refer to the *Definitions* chapter at the back of Volume 1 for notes relating to coding obstetric deaths BEFORE assigning codes**
- ❖ **Refer to volume 2 5.7.1 for definitions relating to conditions coded to this chapter**

Chapter XV – Pregnancy, Childbirth and the Puerperium

Common Index Lead Terms and modifiers:

Delivery

- complicated by

Pregnancy

- complicated by

Puerperal, puerperium

Labour

Gestational

Obstetric

Disruption

Post partum

Suppressed

Hemorrhage

- antepartum

- postpartum

Distress

Episiotomy

Rupture

Placenta praevia

Abortion

Eclampsia

NCCH



a u s t r a l i a

***Chapter XV Pregnancy, Childbirth and the
Puerperium***
Coding Exercises

**Complete the Pregnancy, Childbirth &
Puerperium Coding Exercises in your
workbook**

NCCH



a u s t r a l i a

MODULE 22 - ANSWERS

Chapter XV Pregnancy, childbirth and the puerperium

1. Spontaneous abortion **003.9**

Note that we need to refer to volume 1 for the fourth character subdivision

MODULE 22 - ANSWERS

265

Chapter XV Pregnancy, childbirth and the puerperium

2. Low forceps delivery with episiotomy

90468-00 [1337], 90472-00 [1343]

NCCH



australia

MODULE 22 - ANSWERS
**Chapter XV Pregnancy, childbirth and the
puerperium**

3. Cardiomyopathy in the puerperium 090.3

*Note: the puerperium is also known as the
postpartum period*

MODULE 22 - ANSWERS

267

Chapter XV Pregnancy, childbirth and the puerperium

4. Fetal distress affecting labour and delivery

068.9

NCCH



australia

MODULE 22 - ANSWERS

Chapter XV Pregnancy, childbirth and the puerperium

5. Premature separation of the placenta

O45.9

*Why don't we have to refer to **Abruptio placentae** as the Index suggests?*

MODULE 22 - ANSWERS

Chapter XV Pregnancy, childbirth and the puerperium

Summary 1:

MC: **O44.0** *Placenta praevia specified as without haemorrhage*

OC: **O82.1** *Delivery by emergency caesarean section* ??? necessary

Z37.0 *Single live birth*

Proc: **16520-01 [1340]** *Emergency classical caesarean section*

MODULE 22 - ANSWERS

Chapter XV Pregnancy, childbirth and the puerperium

Summary 2:

MC: **O13** *Gestational (Pregnancy induced) hypertension without significant proteinuria*

OC: **O64.4** *Obstructed labour due to shoulder presentation*

O81.0 *Low forceps delivery*

O73.0 *Retained placenta without haemorrhage*

Z37.0 *Single live birth*

Proc: **90468-01 [1337]** *Mid cavity forceps delivery*

90472-00 [1343] *Episiotomy*

90482-00 [1345] *Manual removal of placenta*

Chapter XV – Pregnancy, Childbirth and the Puerperium

Mortality Coding Exercise 1

ICD-10 Codes

Line	1a	R58	_____	_____	TUCOD Rule	Acronym
	b	O44.1	_____	_____	O44.1	GP
	c	_____	_____	_____		
	d	_____	_____	_____		
Line II		O24.4	_____	_____		

Final UCOD: *O44.1 Placenta praevia with haemorrhage*

Notes and Comments:

Table D = Select O44.1 as TUCOD

Table E Address ---O441---, no modification required.

O44.1 is listed in Table A as a valid UCOD code.

NCCH



a u s t r a l i a

Chapter XV – Pregnancy, Childbirth and the Puerperium²⁷²

Mortality Coding Exercise 2

ICD-10 Codes

Line	1a	075.1	_____	_____	TUCOD	Rule	Acronym
	b	066.9	_____	_____	032.1	GP	
	c	032.1	_____	_____	064.1	Rule C	LDC
	d	_____	_____	_____			
Line II		?	_____	_____			

Final UCOD: *O64.1 Obstructed labour due to breech presentation*

Notes and Comments:

General principle - Select O32.1 as TUCOD

Table E Address ---O321---, O66.9 is listed LDC O64.1

Table E Address ---O641---, no further modification required

O64.1 is listed in Table A as a valid UCOD code

Chapter XVI - Certain Conditions Originating in the Perinatal Period

- ❖ **Categories range from P00 to P96**
- ❖ **Of the 100 available categories, 59 have been allocated**
- ❖ **1 inclusion at the beginning of this chapter, and 5 exclusions**

Chapter XVI Certain conditions arising in the perinatal period

- ❖ Used for conditions which **initially arise in the perinatal period** although death or morbidity may not appear until later
- ❖ may appear on records of **children or adults**
- ❖ includes maternal conditions which may have affected the baby, trauma occurring at birth, conditions arising in perinatal period

Chapter XVI - Certain Conditions Originating in the Perinatal Period

- ❖ Disorders related to length of gestation and fetal growth - birth weight takes priority over gestational age
- ❖ P07-P08 notes provide guidance if both birth weight and gestational age are specified
- ❖ P10-P15 birth trauma classified according to the physical effect of the injury
- ❖ P35-P39 includes only congenital infections and parasitic disease, and infections acquired in utero or present at birth

Chapter XVI - Certain Conditions Originating in the Perinatal Period

IMPORTANT POINTS: MODULE 23

- ❖ Refer to *Definitions* chapter in Volume 1 for definitions related to perinatal deaths **BEFORE** assigning codes
- ❖ Refer also to volume 2 5.7.1 for definitions relating to conditions coded to this chapter

Chapter XVI - Certain Conditions Originating in the Perinatal Period

Common Index Lead Terms and modifiers:

Birth

- trauma

Distress

Congenital

Neonatal

Jaundice

Prematurity

NCCH



a u s t r a l i a

Chapter XVI Certain Conditions Arising in the Perinatal Period *Coding Exercises*

Complete the Disorders of the Perinatal
Period Coding Exercises in your
workbook

NCCH



a u s t r a l i a

MODULE 23 - ANSWERS

Chapter XVI Certain conditions originating in the perinatal period

1. Low birth weight - baby weighed 900 grams **P07.0**

Note: don't forget the definitions in volume 2 at section 5.7.1

MODULE 23 - ANSWERS

Chapter XVI Certain conditions originating in the perinatal period

2. Fetal death **P95**

Note: This is a really poor diagnosis - you should try to get more information about why the baby died

MODULE 23 - ANSWERS

Chapter XVI Certain conditions originating in the perinatal period

3. Congenital hydrocele *P83.5*

NCCH



a u s t r a l i a

MODULE 23 - ANSWERS

Chapter XVI Certain conditions originating in the perinatal period

4. Feeding problems of newborn *P92.9*

Chapter XVI Certain conditions originating in the perinatal period

5. Birth injury to spine

P11.5

Note: did you follow the See also instruction in the Index?

MODULE 23 - ANSWERS

Chapter XVI Certain conditions originating in the perinatal period

Summary 1:

MC: **P07.1** *Other low birth weight*

OC: **P59.0** *Neonatal jaundice associated with preterm delivery*

Summary 2:

MC: **P24.0** *Neonatal aspiration of meconium*

OC: **P02.4** *Fetus and newborn affected by prolapsed cord*

P28.1 *Other and unspecified atelectasis of newborn*

Chapter XVI - Certain Conditions Originating in the Perinatal Period Mortality Coding Exercise 1

ICD-10 Codes

TUCOD Rule

Acronym

Line	1a	I60.9	_____	_____
	b	G91.9	(Q03.9)	_____
	c	P37.1	_____	_____
	d	_____	_____	_____
Line II		_____	_____	_____

P37.1 Rule 1

Final UCOD: *P37.1 Congenital toxoplasmosis*

Notes and Comments:

General principle does not apply. Go to Rule 1.

TUCOD is P37.1 using Rule 1.

Table E Address ---P371---, no listing of this address. No modification required.

P37.1 is listed in Table A as a valid UCOD code.



286

Chapter XVI - Certain Conditions Originating in the Perinatal Period

Mortality Coding Exercise 2

ICD-10 Codes

Line	1a	P37.0	_____	_____	TUCOD Rule	Acronym
	b	_____	_____	_____	P37.0	GP
	c	_____	_____	_____		
	d	_____	_____	_____		
Line II		P24.0	_____	_____		

Final UCOD: P37.0 Congenital tuberculosis

Notes and Comments:

P37.0 is the TUCOD, only condition entered in Part 1.

Table E Address ---P37.0---, no Address for P37.0. no modification required.

P37.0 is listed in Table A as a valid UCOD.

Coding issue - identifying that COD originated in the perinatal period. Duration from onset to death is 2 months and the age of the deceased is 2 months. Look for index entries, notes and exclusions for codes specific to perinatal period

NCCH



australia

Chapter XVII - Congenital Malformations, Deformations and Chromosomal Abnormalities

- ❖ Categories range from Q00 to Q99
- ❖ 87 of the available 100 categories have been allocated
- ❖ No asterisk categories are found in this chapter

Chapter XVII - Congenital Malformations, Deformations and Chromosomal Abnormalities

- ❖ **All congenital anomalies classified to this chapter except inborn errors of metabolism, which are coded to E70-E90**
- ❖ **Blocks associated with body system in which anomaly is present, except for cleft palate and cleft lip (Q35-Q37)**

Cleft Lip and Cleft Palate

- ❖ Note changes to ICD-10 effective 1999 for code Q35
- ❖ 4th character on Q35 to indicate hard palate, soft palate, uvula
- ❖ Q35 Congenital cleft palate
- ❖ Q36 Congenital cleft lip
- ❖ Q37 Cleft lip with cleft palate

***Chapter XVII Malformations, Deformations
and Chromosomal Abnormalities***
Coding Exercises

**Complete the Congenital Abnormalities
Coding Exercises in your workbook**

NCCH



a u s t r a l i a

MODULE 24 - ANSWERS

Chapter XVII Congenital malformations, deformations and chromosomal abnormalities

1. Patent ductus arteriosus **Q25.0**

NCCH



a u s t r a l i a

MODULE 24 - ANSWERS

Chapter XVII Congenital malformations, deformations and chromosomal abnormalities

2. Cervical spina bifida with hydrocephalus

Q05.0

MODULE 24 - ANSWERS
**Chapter XVII Congenital malformations,
deformations and chromosomal abnormalities**

3. Repair of hypospadias – 1st stage

37827-00 [1198]

NCCH



a u s t r a l i a

MODULE 24 - ANSWERS
**Chapter XVII Congenital malformations,
deformations and chromosomal abnormalities**

4. Pentalogy of Fallot Q21.8

NCCH



a u s t r a l i a

MODULE 24 - ANSWERS

Chapter XVII Congenital malformations, deformations and chromosomal abnormalities

5. Laryngocele **Q31.3**

NCCH



australia

MODULE 24 - ANSWERS

Chapter XVII Congenital malformations, deformations and chromosomal abnormalities

Summary 1:

MC: **Q78.0** *Osteogenesis imperfecta*

OC: **M84.42** *Pathological fracture NEC, upper arm*

Proc:**47450-01 [1414]** *Open reduction of fracture of shaft of humerus with internal fixation*

MODULE 24 - ANSWERS
**Chapter XVII Congenital malformations,
deformations and chromosomal
abnormalities**

Summary 2:

MC: Q21.0 *Ventricular septal defect*

OC: -

**Proc: 38751-02 [618] *Closure of ventricular
septal defect***

**38600-00 [642] *Cardiopulmonary
bypass, central cannulation***

**38218-00 [668] *Coronary angiography
with left heart catheterisation***

Chapter XVII – Congenital Malformations, Deformations and Chromosomal Abnormalities

Mortality Coding Exercise 1

ICD-10 Codes

					TUCOD	Rule	Acronym
Line	1a	Q23.0	Q23.2	_____	Q89.9	GP	
	b	Q89.9	_____	_____	Q23.0	Rule D	SMP
	c	_____	_____	_____	Q23.2	Rule D	SMP
	d	_____	_____	_____	Q23.0	Rule 1	Concept
Line II		P07.3	_____	_____			

Final UCOD: *Q23.0 Congenital stenosis of aortic valve*

Notes and Comments:

TUCOD is Q89.9 using General Principle – Table D

Table E Address ---Q899---: Both Q23.0 and Q23.2 are listed (SMP)

Table E Addresses ---Q230---, ---Q232---, Q23.0 is not listed in either. The Decision Tables provide no further guidance. Select the “first mentioned” *Q23.0 Congenital stenosis of aortic valve* on Line 1a. Q23.0 is listed in Table A as a valid UCOD code



Chapter XVII – Congenital Malformations, Deformations and Chromosomal Abnormalities

Mortality Coding Exercise 2

ICD-10 Codes

Line	1a				TUCOD	Rule	Acronym
		Q03.9	_____	_____	Q89.9	GP	
	b	Q89.9	_____	_____	Q03.9	Rule D	SMP
	c	_____	_____	_____	Q05.6	Rule D	SMP
	d	_____	_____	_____	Q05.1	Rule C	LMC
Line II		Q05.6	_____	_____			

Final UCOD: Q05.1 Thoracic spina bifida with hydrocephalus

Notes and Comments:

TUCOD is Q89.9 using General Principle. Table E Address ---Q899---: Both Q03.9 and Q05.6 are listed (SMP) Look up Table E Address ---Q039---, Q05.6 is listed (LMC) Q05.1 Look up Table E Address ---Q056---, Q03.9 is listed (LMC) Q05.1 Both Q03.9 and Q05.6 from application of Rule D Specificity, combine to the much more descriptive UCOD code *Q05.1 Thoracic spina bifida with hydrocephalus*. Q05.1 is listed in Table A as a valid UCOD code



Chapter XVIII - Symptoms, signs and Abnormal Clinical & Laboratory Findings, Not Elsewhere Classified

- ❖ Categories range from R00 to R99
- ❖ 90 of the available 100 categories have been allocated
- ❖ Blocks are listed after 2 chapter level exclusions. Any exclusions from a block or category are given at that level
- ❖ There are no asterisk categories in this chapter

Chapter XVIII - Symptoms, signs and Abnormal Clinical & Laboratory Findings, Not Elsewhere Classified

- ❖ The Alphabetical Index (Volume 3) should always be used to clarify which signs and symptoms are to be assigned to chapter XVIII and which to other chapters
- ❖ Some symptoms specific to a particular body system are found in the body system chapters
- ❖ Read the important note on at the start of the chapter, which provides guidance for use of this chapter

Chapter XVIII - Symptoms, signs and Abnormal Clinical & Laboratory Findings, Not Elsewhere Classified

- ❖ R10 is subdivided according to the site of the pain
- ❖ R47-R49 classifies symptoms and signs involving speech and voice
- ❖ R70-R94 used when no clear diagnosis has been given & a person is having follow-up of a previous examination which indicated abnormal findings
- ❖ R95-R99 only for mortality coding – used if no other specific code can be assigned

***Chapter XVIII - Symptoms, signs and
Abnormal Clinical & Laboratory Findings,
Not Elsewhere Classified
Coding Exercises***

**Complete the Signs and Symptoms Coding
Exercises in your workbook**

NCCH



a u s t r a l i a

MODULE 25 - ANSWERS

Chapter XVIII Symptoms, signs and abnormal clinical & laboratory findings, not elsewhere classified

1. *Pyrexia of unknown origin* **R50.9**

Note that there are more specific codes shown in the Index and as Exclusion notes in the Tabular list for pyrexia occurring in conjunction with different conditions, but our diagnosis is pyrexia of unknown origin.

MODULE 25 - ANSWERS

Chapter XVIII Symptoms, signs and abnormal clinical & laboratory findings, not elsewhere classified

2. False-positive Wassermann reaction for syphilis **R76.2**

MODULE 25 - ANSWERS

Chapter XVIII Symptoms, signs and abnormal clinical & laboratory findings, not elsewhere classified

3. *Hyperglycaemia* **R73.9**

Note that there are more specific codes to use if you know the cause of the hyperglycaemia

MODULE 25 - ANSWERS

Chapter XVIII Symptoms, signs and abnormal clinical & laboratory findings, not elsewhere classified

4. Petechiae **R23.3**

Note: what code would we use if the petechiae had occurred in a newborn baby?

MODULE 25 - ANSWERS

Chapter XVIII Symptoms, signs and abnormal clinical & laboratory findings, not elsewhere classified

5. Hallucinations (visual) R44.1

There are individual codes for the differing types of hallucinations - visual, auditory and other hallucinations

MODULE 25 - ANSWERS

Chapter XVIII Symptoms, signs and abnormal clinical & laboratory findings, not elsewhere classified

Summary 1:

MC: **R07.4** *Chest pain unspecified*

OC: -

Proc: **11712-00 [1857]** *Cardiovascular stress test*

Summary 2:

MC: **R10.1** *Pain localised to upper abdomen*

OC: -

Proc: -

Findings, NEC
Mortality Coding Exercise 1

ICD-10 Codes

Line	1a	R99	_____	_____	TUCOD Rule	Acronym
	b	_____	_____	_____	R99	GP
	c	_____	_____	_____		
	d	_____	_____	_____		
Line II		_____	_____	_____		

Final UCOD: *R99 Other ill-defined and unspecified causes of mortality*

Notes and Comments:

R99 is selected as UCOD as only condition listed on the certificate.

Some lateral thinking required here for the Index look up. This type of non-specific documentation should be avoided.

R99 is listed in Table A as a valid UCOD code.



Findings, NEC
Mortality Coding Exercise 2

ICD-10 Codes

Acronym

TUCOD Rule

Line	1a	R54	_____	_____	R54	Rule 2	
	b	R53	_____	_____	R54	Rule A	SENDC
	c	R53	_____	_____			
	d	_____	_____	_____			
Line II		_____	_____	_____			

Final UCOD: R54 Senility

Notes and Comments:

Table D Address ---R54---, R53 is not listed. No sequence terminating in the condition first entered so we can skip Rule 1.

Select first mentioned condition using Rule 2. TUCOD is R54.

Table E Address ---R54---, R53 is listed (SENDC) but simply prefers our original code selection R54

R54 is listed in Table A as a valid UCOD code



Chapters XIX and XX Injury, poisoning and external causes

- The use of Chapter XX codes permits the classification of environmental events, circumstances and conditions as the **cause of injury, poisoning and other adverse effects**. A Chapter XIX code specifies the **outcome** of the event.
- a Chapter XX code should *always* be assigned with a Chapter XIX code. Chapter XX codes are never sequenced as **main condition** but will be used as the **underlying cause of death**
- Together, the codes describe how the injury occurred as well as what the injury itself is

Chapter XIX – Injury, Poisoning and certain other Consequences of External Causes

IMPORTANT POINTS: CHAPTER XIX

- ❖ **Categories range from S00 to T98**
- ❖ **Of the 199 available categories 195 have been allocated**
- ❖ **There are 21 blocks**
- ❖ **The codes reflect the nature of injury**

Chapter XIX: Injury, poisoning and certain other consequences of external causes

- ❖ Blocks S00-S99 classified by specific body region at 3rd character level e.g. head, thorax
- ❖ 4th character indicates the type of injury that occurred, e.g. fracture, open wound
- ❖ Blocks T00-T98 are used to code all other trauma and multiple injuries, e.g. burns, complications of surgery, poisonings
- ❖ all injuries can be coded; avoid the use of 'multiple injury' codes unless there is no other option

Chapter XX- External Causes of Morbidity and Mortality³¹⁵

IMPORTANT POINTS: CHAPTER XX

- ❖ Four letters of the alphabet - V,W,X and Y - have been used in this chapter - the largest chapter in ICD-10.
- ❖ Categories range from V01 to Y98.
- ❖ Of the 400 available categories 372 have been used.
- ❖ 8 major blocks according to the **intent** of the incident

Chapter XX: External Causes

- Codes arranged according to whether injury was result of:
 - accident
 - intentional self-harm (including suicide)
 - assault
 - undetermined intent
 - legal intervention or operations of war
 - complication of medical or surgical care
 - sequelae of external causes
 - supplementary factors

Chapter XX- External Causes of Morbidity and Mortality

IMPORTANT POINTS: CHAPTER XX

- ❖ **A separate Index (Section II of Volume 2) is provided to begin the classification process for coding external causes**
- ❖ **Common language, not medical terminology, is used to document external causes of injury**
- ❖ **Some lateral thinking is often required to determine the best Lead term to use. (eg. Burn = Exposure to fire = Contact with acid)**

Poisonings and adverse effects

- ❖ Poisoning or adverse effects of therapeutic drugs or toxic effects of non-medicinal substances
- ❖ Both external cause and poisoning codes are in Table of Drugs and Chemicals at back of Volume III
- ❖ Table divided into columns to indicate intent: accidental, intentional self-harm, undetermined, in therapeutic use
- ❖ Adverse effect in therapeutic use is used when a patient has an abnormal or prophylactic reaction to a drug or chemical given by a clinician as treatment

Fractures

- ❖ Optional 5th character to indicate whether fracture open or closed
- ❖ Default is closed
- ❖ If patient suffers both dislocation and fracture of the same site, only the fracture is coded

Burns

- ❖ Classified according to body site and degree (1⁰, 2⁰, 3⁰) – see block T20-T25
- ❖ If more than one degree in same body site, code to the most severe degree
- ❖ If body site is not specified, code to percent of body surface involved using a code from T31-T32
- ❖ Most severe burn will be main condition but if >1 burn with same degree, code the burn accounting for greatest body surface area

When to use external cause codes

- Chapter XX codes are used routinely in combination with codes from Chapter XIX
- Chapter XX codes can also be assigned with codes from Chapter I-XVII to identify the external cause of a condition, e.g. dermatitis due to working with solvents or due to wearing cosmetics

Transport accidents (V01-V99)

- Transport = vehicle being used to convey passengers or goods - on land, water or in the air
- classified at the three character level by the mode of transport or type of vehicle occupied by the injured person and at the fourth character level according to the position of the person in the motor vehicle e.g. driver, passenger

Traffic versus non-traffic accidents

- ❖ Traffic accidents occur on, or partially on, public roads
- ❖ Non-traffic accidents do not occur on public roads – e.g. on private property, off-road
- ❖ Volume III contains a useful Table of Land Transport accidents tabulating the type of vehicle and the location of the person in the vehicle – see Accident, transport

Place of occurrence and activity codes

- ❖ Place of occurrence codes added as 4th characters to codes in ranges W00-Y05 and Y09-Y34 to indicate **where** the external cause happened
- ❖ Activity codes are **optional** codes (?5th characters) for range Y01-Y34 to indicate **what the injured person was doing** at the time of the injury

Post-procedural complications – diagnosis code

- ❖ Defined as an injury or diagnosis arising as a result of a surgical or medical procedure, rather than normal disease process
 - ❖ Misadventures
 - ❖ Early and late complications
 - ❖ Sequelae
 - ❖ Transient post-procedural complications

Post-procedural complications – external cause code

- ❖ *Y60-Y69 misadventures during surgical and medical care*
- ❖ *Y70-Y82 medical devices associated with adverse incidents in diagnostic or therapeutic use*
- ❖ *Y83-Y84 abnormal reactions and later complications without misadventure at time of procedure*

***Chapters XIX and XX Injury, poisoning and
external causes***
Coding Exercises

**Complete the Injuries and External Causes
Coding Exercises in your workbook**

NCCH



a u s t r a l i a

MODULE 26 - ANSWERS

328

Chapter XIX Injury & Chapter XX External causes of morbidity and mortality

1. Multiple lacerations to abdomen, inflicted by a knife during a fight in a bar. The victim was a bar attendant working in the bar at the time. **S31.7, X99.52**

Notes:

We need to follow the See also Wound, open instruction under laceration

We also need to follow the See also Assault instruction under Fight in the External Causes Index

A knife is classed as a cutting or piercing weapon

Did you remember to add the place of occurrence and activity codes?

NCCH



a u s t r a l i a

MODULE 26 - ANSWERS

Chapter XIX Injury & Chapter XX External causes of morbidity and mortality

2. Cerebral contusion due to fall from bed onto floor, whilst sleeping, at home. **S06.20**
W06.04

Notes:

At the beginning of the S06 rubric is a list of optional fifth character subdivisions to indicate if the contusion occurred with or without open intracranial wound

Did you remember to add the place of occurrence and activity characters on the external cause code?

MODULE 26 - ANSWERS

Chapter XIX Injury & Chapter XX External causes of morbidity and mortality

3. Adverse reaction to anaesthetic given prior to surgical operation **T88.5 Y48.4**

Notes: Follow the See anesthesia, complication instruction in the Index under Reaction for our injury/poisoning code

Look up the Table of Drugs and Chemicals in Volume 3 to help locate the external cause code. Use the column for adverse effect in therapeutic use.

MODULE 26 - ANSWERS

Chapter XIX Injury & Chapter XX External causes of morbidity and mortality

4. The final diagnosis for this 24-year-old motor cycle rider, who was involved in a collision with a car, was a closed fracture mid shaft right femur, compound fracture mid shaft right tibia.

S72.30 S82.21 V23.49

Notes:

Don't forget the additional character at the beginning of S27.- to indicate open or closed fracture

Refer to the transport accident table in Volume 3. The first column indicates the type of transport the person who was injured was using and the list across the top indicates what they collided with, or how the accident happened. Add a fourth character to indicate the person's status in the vehicle and whether it was a traffic accident or not

NCCH



a u s t r a l i a

MODULE 26 - ANSWERS

Chapter XIX Injury & Chapter XX External causes of morbidity and mortality

5. Second degree burns to leg from an uncontrolled house fire **T24.2 X00.09**

Note: uncontrolled fire = one that is unexpected, not in a defined area or not under supervision; a controlled fire = in a fireplace or other area designated for fire and flames, generally under supervision

MODULE 26 - ANSWERS

Chapter XIX Injury & Chapter XX External causes of morbidity and mortality

Summary 1:

MC:	S82.21	<i>Fracture of shaft of tibia, open fracture</i>
OC:	S93.0	<i>Dislocation of ankle joint</i>
	V28.09	<i>Motorcycle rider in non collision transport accident, driver injured in non traffic accident, activity not specified</i>
	T81.4	<i>Infection following a procedure, NEC</i>
	B96.5	<i>Pseudomonas as cause of disease classified to other chapters</i>
	Y83.1	<i>Surgical operation with implant of artificial internal device</i>
Proc:	47066-00 [1541]	<i>Open reduction of dislocation of ankle</i>
	90580-00 [1566]	<i>Debridement of open fracture site</i>
	47566-01 [1510]	<i>Open reduction of fracture of shaft of tibia with internal fixation</i>

MODULE 26 - ANSWERS

Chapter XIX Injury & Chapter XX External causes of morbidity and mortality

Summary 2:

MC: **S06.50** *Traumatic subdural haematoma, without open intracranial wound*

OC: **S02.60** *Fracture of mandible, closed*
S02.40 *Fracture of malar and maxillary bones, closed*

W10.92 *Fall on and from stairs and steps, place of occurrence unspecified, activity whilst working for income*

Proc: **47756-00 [1366]** *Closed reduction of fracture of mandible with external fixation*

56001-00 [1952] *Computerised tomography of brain*

39600-00 [8] *Drainage of intracranial haemorrhage*

MODULE 26 - ANSWERS

Chapter XIX Injury & Chapter XX External causes of morbidity and mortality

Summary 3:

MC: **S72.10** *Pertrochanteric fracture*

OC: **W01.09** *Fall on same level from slipping, tripping and stumbling*

S43.0 *Dislocation of shoulder joint*

S51.9 *Open wound of forearm, part unspecified*

W06.24 *Fall involving bed, in hospital, while resting or sleeping*

Proc: **47519-00 [1479]** *Internal fixation of fracture of trochanteric or subcapital femur*

47990-00 [1402] *Closed reduction of dislocation of shoulder*

Chapter XIX and XX – Injury and External Causes
Mortality Coding Exercise 1

ICD-10 Codes

ICD-10 Codes		ICD-10 Codes			TUCOD	Rule	Acronym
Line	1a	R57.9	R58	_____	V89.29	Rule 1	
	b	S22.4	S27.3	S36.0	V44.59	Common sense	
	c	V89.29	_____	_____			
	d	_____	_____	_____			
Line II		V44.59	_____	_____			

Final UCOD: *V44.59 Driver of car, injured in a traffic accident, collision with heavy transport vehicle, unspecified activity*

Notes and Comments:

General principle does not apply. Go to Rule 1.

Select V89.29 as TUCOD using Rule 1.

Table E Address ---V892---, no other External Cause Transport codes (V00-V99) are listed. Information in Part II provides greater specificity and we use Common Sense to modify the Final UCOD to V44.59.

V44.5(9) is listed in Table A as a valid UCOD code.

NCCH



australia

Chapter XIX and XX – Injury and External Causes Mortality Coding Exercise 2

ICD-10 Codes

Line	1a	T71	_____	_____	TUCOD Rule	Acronym
	b	X70.98	_____	_____	X70.98 GP	
	c	_____	_____	_____		
	d	_____	_____	_____		
Line II		_____	_____	_____		

Final UCOD: *X70.98 Intentional self-harm by hanging, strangulation and suffocation, unspecified place of occurrence, other specified activity*

Notes and Comments:

Table D Address ---T71---, X70.98 is listed.

TUCOD X70.98 using the General Principle.

Table E Address ---X70---, No table E Address

No modification required.

X70.(98) is listed in Table A as a valid UCOD code.



**Chapter XIX and XX – Injury and External Causes
Mortality Coding Exercise 3**

ICD-10 Codes

Line		ICD-10 Code	ICD-10 Code	ICD-10 Code	TUCOD	Rule	Acronym
1a		S06.5	_____	_____	V93.19	GP	
	b	S02.1	S02.3	_____	G40.6	Rule 3	DS
	c	V93.19	_____	_____			
	d	_____	_____	_____			
Line II		G40.6	_____	_____			

Final UCOD: G40.6 Grand mal seizures, unspecified

Notes and Comments:

Table D. Select V93.19 as TUCOD using General Principle.

Table E Address --- V93.19---, G40.6 is listed (DS). The fall is an obvious consequence of the Grand mal epileptic seizure.

G40.6 is listed in Table A as a valid UCOD code.



Chapter XXI Factors influencing health status and contact with health services

- ❖ Used to code occasions where a person encounters a health service for reasons other than a current illness or injury
 - ❖ follow up of a previously treated condition
 - ❖ advice or counselling
 - ❖ risk surveillance and public health activities
 - ❖ routine examination of a healthy person
 - ❖ management of reproduction
 - ❖ antenatal and postnatal care

Chapter XXI - Factors Influencing Health Status and Contact With Health Services

- ❖ Categories range from Z00 to Z99
- ❖ 84 of the available 100 categories have been used
- ❖ 7 blocks

Chapter XXI - Factors Influencing Health Status and Contact With Health Services

- ❖ Z00-Z13 - many exclusions to other categories within the block and other categories outside of the block
- ❖ Z30-Z39 includes all aspects of reproduction, including contraceptive management, procreative management and pregnancy and antenatal care
- ❖ Z37 Outcome of delivery used as an additional code to identify the outcome of delivery on the mother's record

Chapter XXII - Codes for special purposes

IMPORTANT POINTS: MODULE 27

- ❖ U04.9 – provisional assignment of code for SARS Severe acute respiratory syndrome
- ❖ U80 – U89 – Bacterial agents resistant to antibiotics
 - ❖ U80.- Penicillin and related antibiotics
 - ❖ U81.- Vancomycin and related antibiotics
 - ❖ U89.- Other and unspecified antibiotics

***Chapter XXI - Factors Influencing Health
Status***

***Chapter XXII - Codes for special purposes
Coding Exercises***

**Complete the Factors Influencing Health
Status exercises and exercises for Codes
for Special Purposes in your workbook**

MODULE 27 - Answers

Chapter XXI - Factors Influencing Health Status

Chapter XXII - Codes for special purposes

Coding Exercises

1. Incidental pregnancy **Z33**

2. Convalescence following surgery **Z54.0**

NCCH



a u s t r a l i a

MODULE 27 - Answers

Chapter XXI - Factors Influencing Health Status

Chapter XXII - Codes for special purposes

Coding Exercises

3. Reversal of vasectomy (also known as vasoplasty) **Z31.0**

4. Patient “has been in contact with cholera”
Z20.0

NCCH



a u s t r a l i a

MODULE 27 - Answers

Chapter XXI - Factors Influencing Health Status

Chapter XXII - Codes for special purposes

Coding Exercises

5. Outcome of delivery: single live birth
(code the mother's record) **Z37.0**

MODULE 27 - Answers

Chapter XXI - Factors Influencing Health Status

Chapter XXII - Codes for special purposes

Coding Exercises

6. Routine follow-up after surgery for malignant bladder papilloma **Z08.0**

Note: Look up Examination in the Index

NCCH



a u s t r a l i a

MODULE 27 - Answers

Chapter XXI - Factors Influencing Health Status

Chapter XXII - Codes for special purposes

Coding Exercises

7. Chemotherapy session **Z51.2**

8. Fitting and adjustment of external breast prosthesis **Z44.3**

NCCH



a u s t r a l i a

MODULE 27 - Answers

Chapter XXI - Factors Influencing Health Status

Chapter XXII - Codes for special purposes

Coding Exercises

9. Severe acute respiratory syndrome **U04.9**

NCCH



a u s t r a l i a