



**PUBLIC HEALTH SITUATION AT A GLANCE
SUPER CYCLONE 'SIDR': BANGLADESH
04 MARCH 2008, 14:00 HRS (BDST)**



Public Health Situation in 9 Districts: (Since 16 January 2008 to 03 March 2008)

- Total severely affected Districts: 9
- Total severely affected Upazilas: 57
- Total severely affected unions: 438
- Total Cases (From 26 November 2007 to 03 March 2008): 1,77,958
- Doctors working in Medical Team: 383 including specialist physicians

Source: DGHS, MoH&FW

Public Health Situation Highlights:

- Disease situation during 16 January 2008 to 03 March 2008 in 9 districts

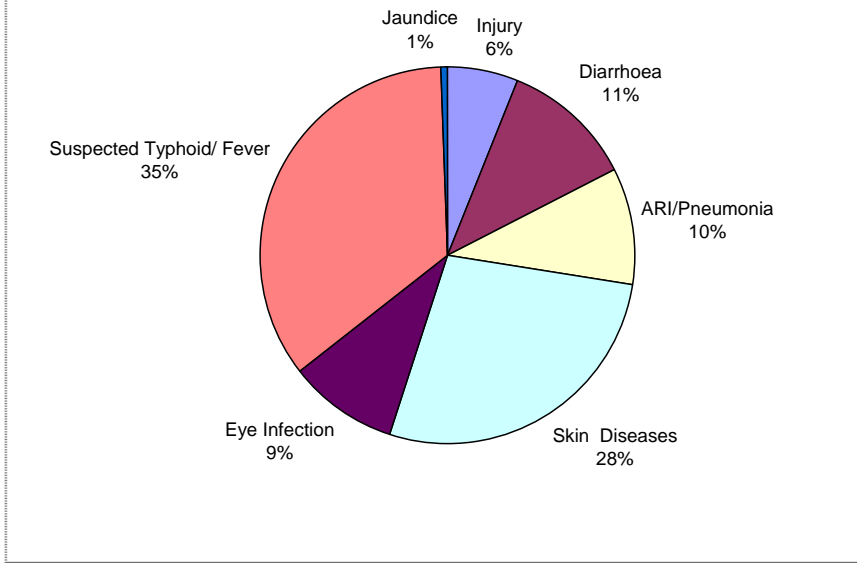
District	Injury	Diarrhea	RTI	Skin Infection	Eye Infection	Typhoid Suspected	Jaundice
Barisal	2	132	299	800	133	922	1
Patuakhali	1535	1122	1346	5795	1273	5214	123
Pirojpur	1096	647	663	2656	1136	4130	76
Jhalokhati	6	122	52	0	0	10	0
Barguna	82	191	372	1462	996	2853	65
Bhola	13	270	166	33	20	33	0
Khulna	13	146	195	14	4	91	0
Bagerhat	259	1130	525	2328	803	3325	1
Satkhira	0	1789	1194	313	180	477	0
Total	3006	5549	4812	13401	4545	17055	266

- Patuakhali, Pirojpur and Bagerhat district showing highest number of cases during 16 January 2008 to 03 March 2008.
- Bi-weekly Disease patterns are showing declining disease trends in 9 Sidr affected districts (See Annexure).
- Fever/Typhoid (Suspected) followed by Skin diseases still shows high trend.

Public Health Intervention:

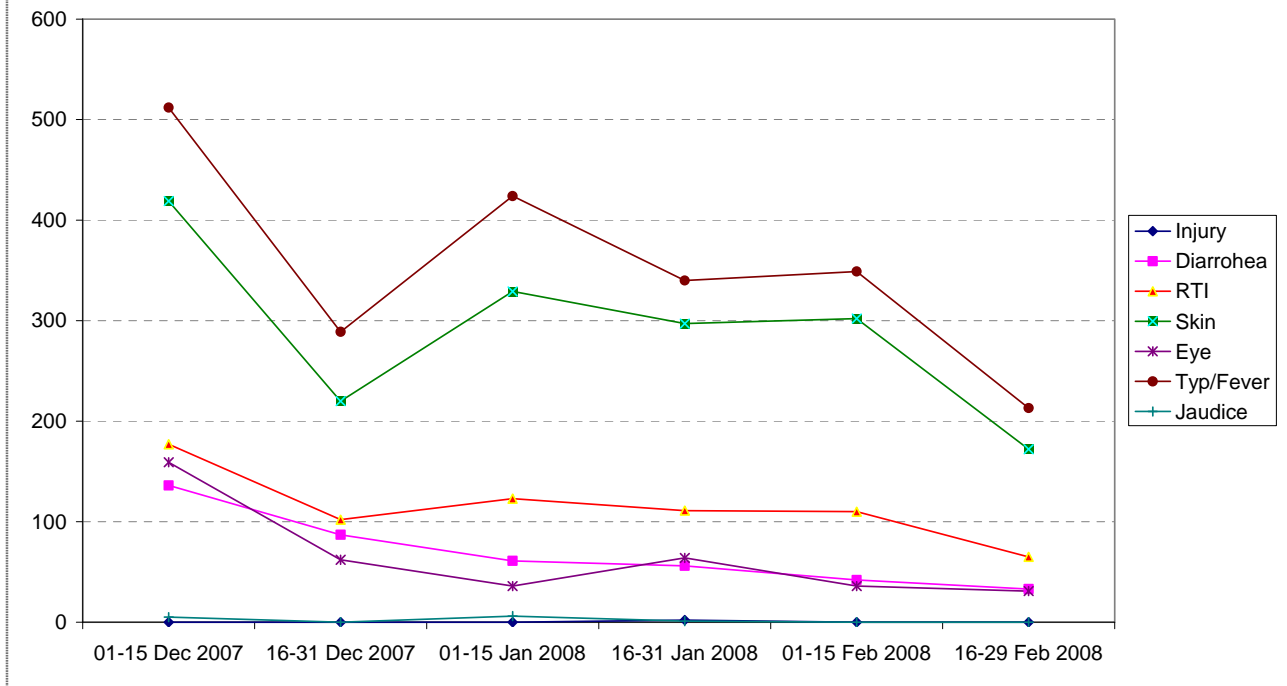
- 6 Health Cluster meetings, Local Consultative Group, Disaster and Emergency Response (DER) sub-group have taken place at national level and 13 health cluster coordination Meetings were held in Sidr affected areas.
- 2nd training on "Capacity Building of Senior level health managers" of Sidr affected districts in Barisal division took place on 27-28 January 2008.
- At the request of WHO and DGHS, ICDDR, B sent one medical team to Bagerhat district and they have identified a few cases of S. Typhi & S. Paratyphi as well as Shigella Flex. Dysentery. The antibiogram shows that dysentery cases are sensitive to Cefixime & Cetriaxone, whereas, the typhoid cases are sensitive to Cefixime, Cetriaxone, Chloramphenicol & Gentamycin. WHO requested the DGHS to keep constant vigil in those areas and strengthen disease surveillance.

Cumulative Cases in 9 Affected Districts following Sidr
16 Jan. 2008 - 03 Mar. 2008

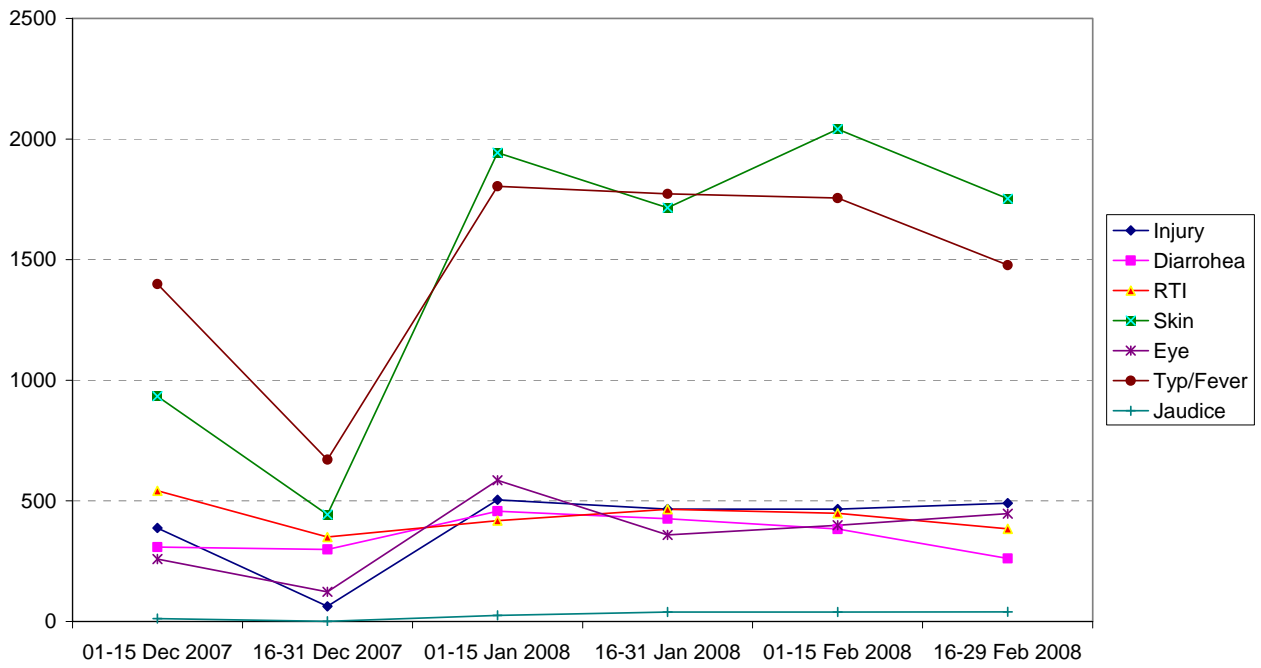


Annexure

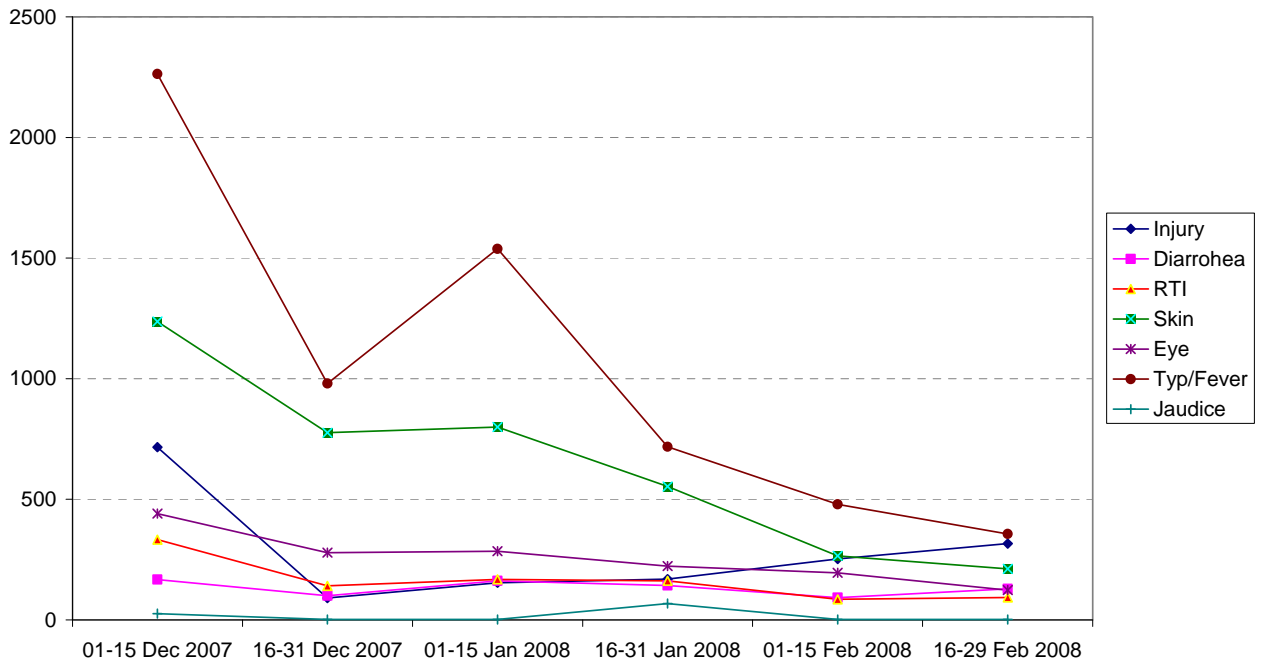
Bi weekly Disease Pattern in Barisal



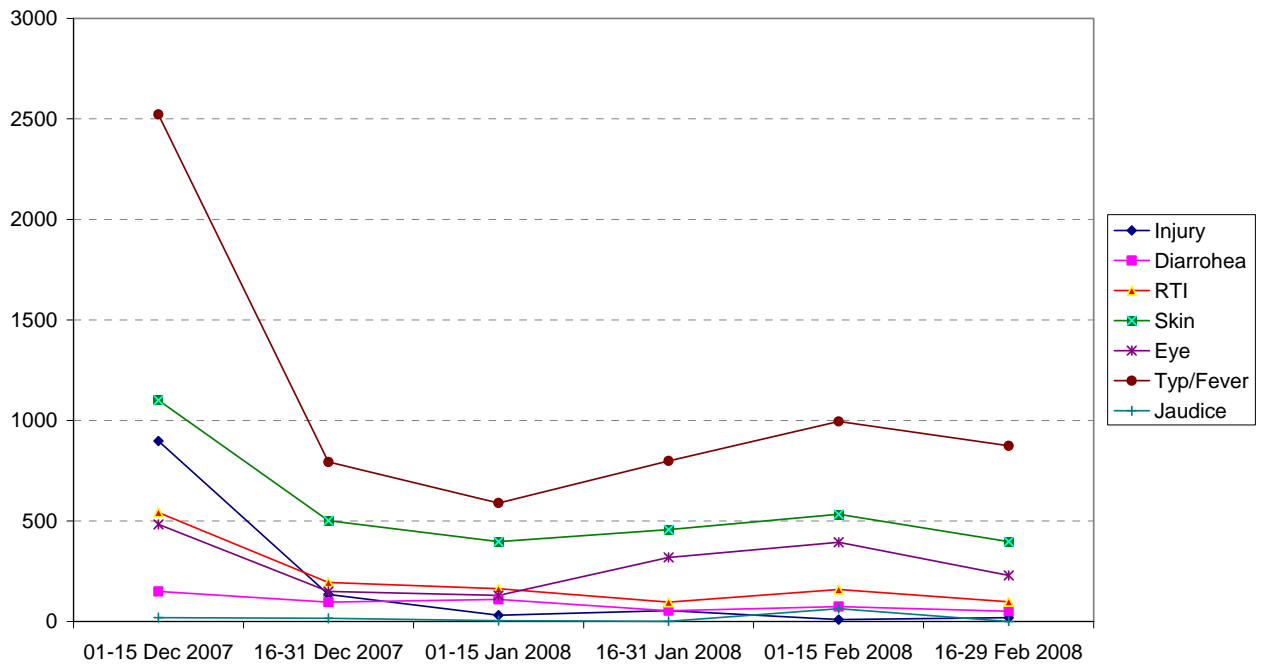
Bi weekly Disease Pattern in Patuakhali



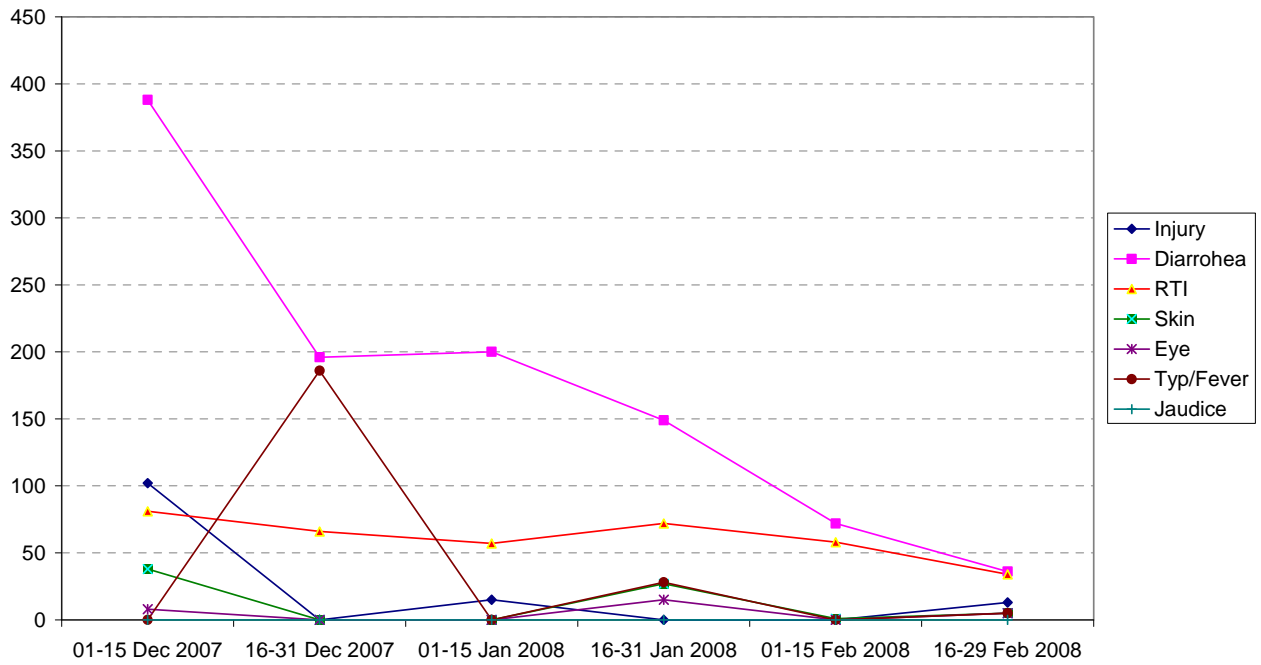
Bi weekly Disease Pattern in Pirojpur



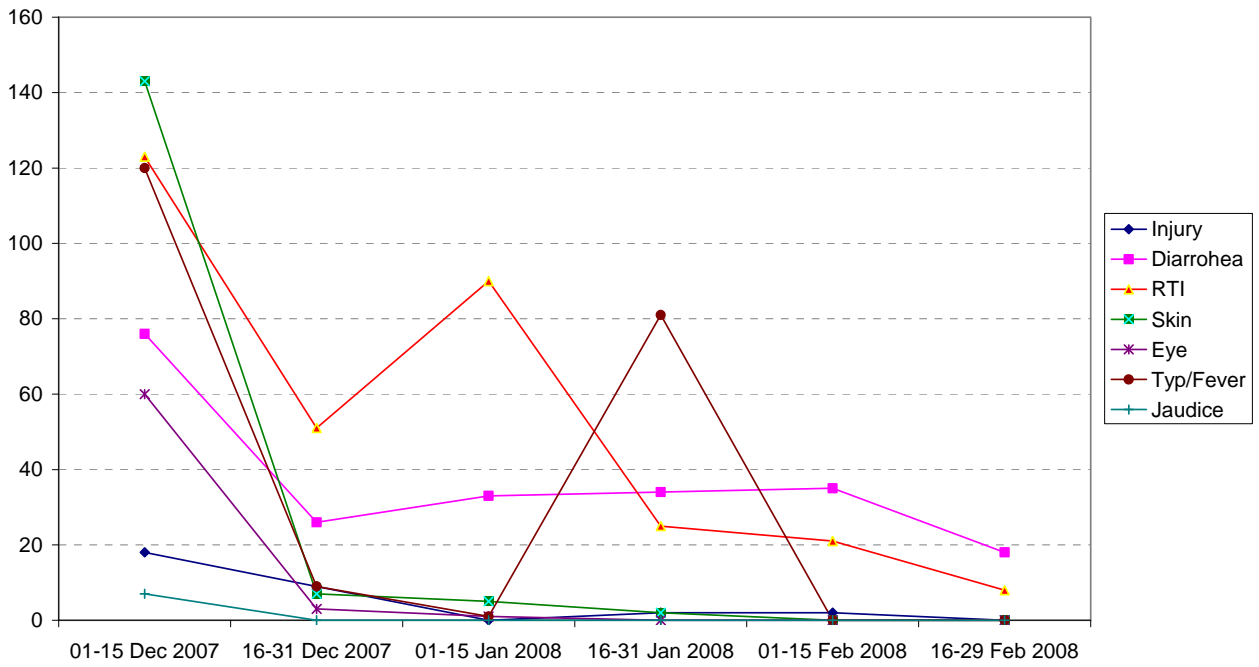
Bi weekly Disease Pattern in Barguna



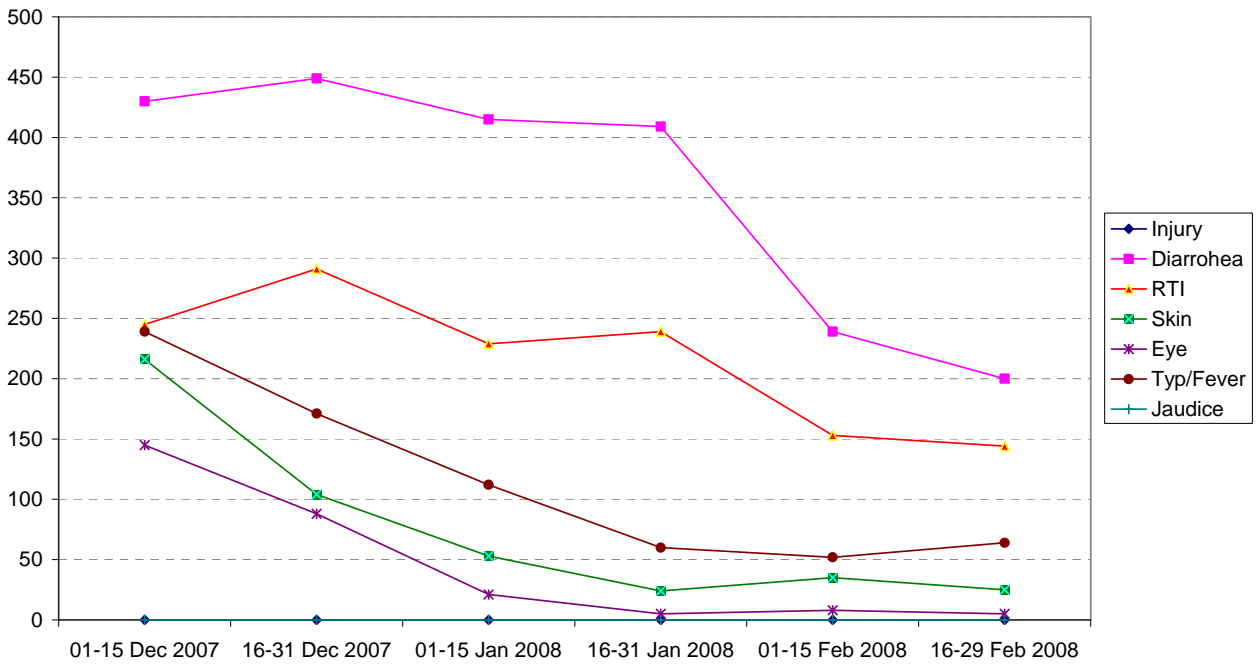
Bi weekly Disease Pattern in Bhola



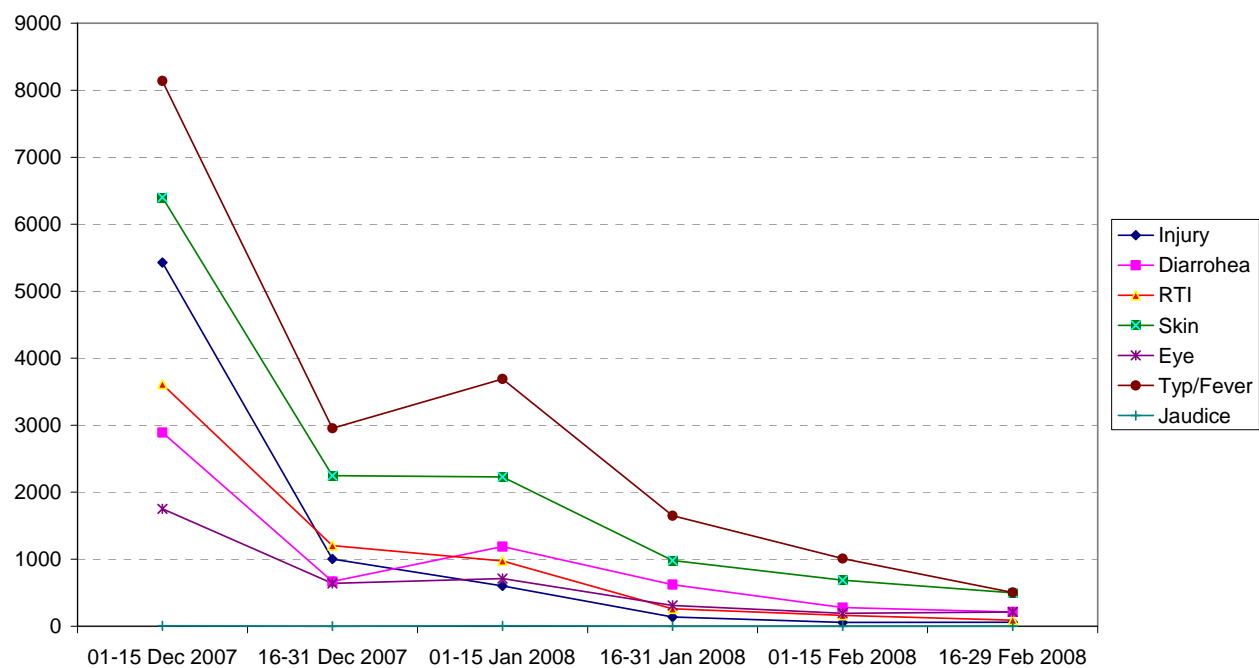
Bi weekly Disease Pattern in Khulna



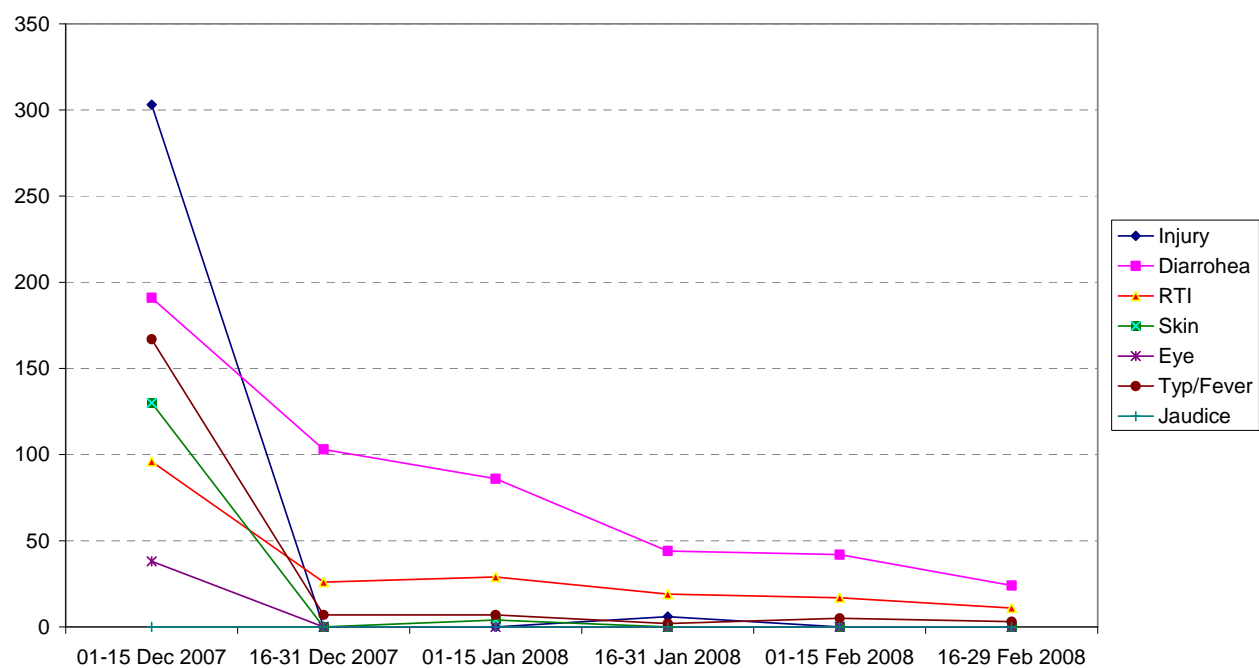
Bi weekly Disease Pattern in Satkhira



Bi weekly Disease Pattern in Bagerhat



Bi weekly Disease Pattern in Jhalakati



Source: DGHS, MoH&FW