

# MYANMAR

## Cyclone NARGIS

### Who/What/Where-Health

7 May 2008

#### Ayeyarwady Division (MMR017)

Map Index	Township	Pcode
1	Bogale	MMR017024
2	Danubyu	MMR017022
3	Dedaye	MMR017026
4	Einme	MMR017015
5	Hinthada	MMR017008
6	Ingapu	MMR017013
7	Kangyidaunt	MMR017002
8	Kyaiklat	MMR017025
9	Kyangin	MMR017012
10	Kyonpyaw	MMR017007
11	Labutta	MMR017016
12	Lemyethna	MMR017010
13	Maubin	MMR017019
14	Mawlamyinegyun	MMR017018
15	Myanaung	MMR017011
16	Myaungmya	MMR017014
17	Ngapudaw	MMR017004
18	Nyaungdon	MMR017021
19	Pantanaw	MMR017020
20	Patheingyi	MMR017001
21	Pyaw	MMR017023
22	Thabaung	MMR017003
23	Wakema	MMR017017
24	Yegyi	MMR017006
25	Zalun	MMR017009

#### Bago East Division (MMR007)

Map Index	Township	Pcode
27	Bago	MMR007001
28	Daik-U	MMR007007
29	Kawa	MMR007003
30	Kyaukyik	MMR007011
31	Kyaughtaga	MMR007006
32	Nyaunglebin	MMR007005
33	Oktwin	MMR007013
34	Phyu	MMR007012
35	Shwegyin	MMR007008
36	Tantabin	MMR007014
37	Taungoo	MMR007009
38	Thanatpin	MMR007002
39	Waw	MMR007004
40	Yedashe	MMR007010

#### Bago West Division (MMR008)

Map Index	Township	Pcode
41	Gyobingauk	MMR008014
42	Letpadan	MMR008008
43	Mintha	MMR008009
44	Monyo	MMR008013
45	Nattalin	MMR008012
46	Okpho	MMR008010
47	Paadaung	MMR008003
48	Pauk Kaung	MMR008002
49	Paungde	MMR008004
50	Pyay	MMR008001
51	Shwedawng	MMR008006
52	Thayarwady	MMR008007
53	Thegon	MMR008005
54	Zigon	MMR008011

#### Kayin State (MMR003)

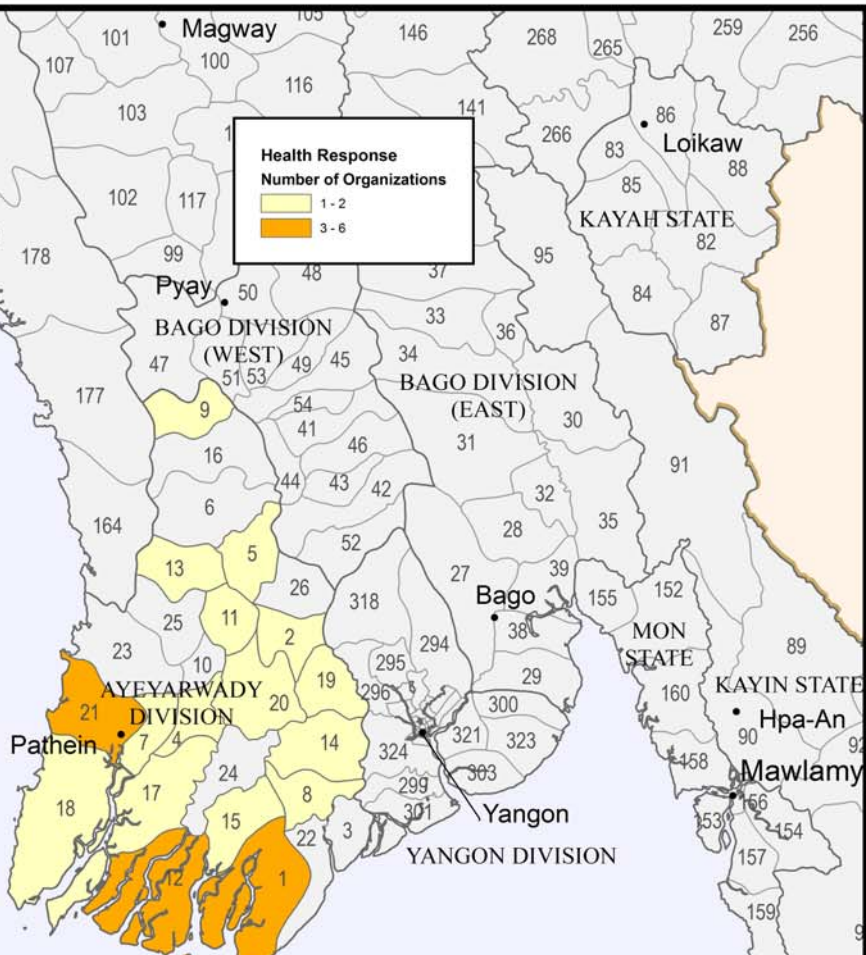
Map Index	Township	Pcode
89	Hlaingbwe	MMR003002
90	Hpa-An	MMR003001
91	Hpaun	MMR003003
92	Kawkareik	MMR003006
93	Kyain Seikgyi	MMR003007
94	Myawaddy	MMR003005
95	Thandaung	MMR003004

#### Mon State (MMR011)

Map Index	Township	Pcode
152	Bilin	MMR011010
153	Chaungzon	MMR011003
154	Kyaikmaraw	MMR011002
155	Kyaikto	MMR011009
156	Mawlamyine	MMR011001
157	Mudon	MMR011005
158	Paung	MMR011008
159	Thanbyuzayat	MMR011004
160	Thaton	MMR011007
161	Ye	MMR011006

#### Yangon Division (MMR013)

Map Index	Township	Pcode
281	Ahlong	MMR013037
282	Bahan	MMR013044
283	Botataung	MMR013017
284	Cocokyun	MMR013032
285	Dagon	MMR013043
286	Dagon Myothit(East)	MMR013020
287	Dagon Myothit(North)	MMR013019
288	Dagon Myothit(Seikkan)	MMR013021
289	Dagon Myothit(South)	MMR013018
290	Dala	MMR013030
291	Dawbon	MMR013014
292	Hlaing	MMR013040
293	Hlaingtharya	MMR013008
294	Hlegu	MMR013004
295	Hmawbi	MMR013003
296	Htantabin	MMR013006
297	Insein	MMR013001
298	Kamaryut	MMR013041
299	Kawhmu	MMR013028
300	Kayan	MMR013026
301	Kungyangon	MMR013029
302	Kyaughtada	MMR013033
303	Kyauktan	MMR013024
304	Kyeemyindaing	MMR013038
305	Lanmadaw	MMR013035
306	Latha	MMR013036
307	Mayangone	MMR013042
308	Mingaladon	MMR013002
309	Mingalartaungnyunt	MMR013022
310	North Okkalapa	MMR013012
311	Pabedan	MMR013034
312	Pazundaung	MMR013016
313	Sanchaung	MMR013039
314	Seikgyikanaungto	MMR013031
315	Seikkan	MMR013045
316	Shwepyithar	MMR013007
317	South Okkalapa	MMR013011
318	Taikkyi	MMR013005
319	Tamwe	MMR013015
320	Thaketa	MMR013013
321	Thanlyin	MMR013023
322	Thingangkuun	MMR013009
323	Thongwa	MMR013025
324	Twantay	MMR013027
325	Yankin	MMR013010

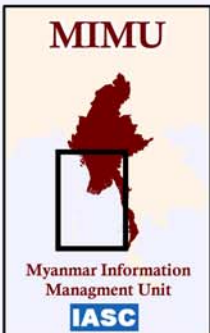


Agencies reporting Health activities throughout a State, Division or Region

State/Division/Region	ORG1	ORG2	ORG3	ORG4	ORG5	# of Orgs
Bago E	SC	UNICEF				2
Bago W	MSI	UNICEF	SC	PSI		4
Kayin	SC	UNDP				2
Mon	SC	UNDP				2
North Rakhine	Malteser					1
Yangon	UNICEF(hospitals)	Alliance	PSI	MDM	ACF	4

Agencies reporting Health activities by Township

DIVISION	TOWNSHIP	ORG1	ORG2	ORG3	ORG4	ORG5	ORG6	# of Orgs
Ayeyarwaddy	Bogale	ACF	PACT	UNDP	Hope	MSF-CH		5
Ayeyarwaddy	Danubyu	PACT	UNDP					2
Ayeyarwaddy	Einme	WVI						1
Ayeyarwaddy	Hinthada	PSI						1
Ayeyarwaddy	Kangyidaunt	SC						1
Ayeyarwaddy	Kyaiklat	UNDP						1
Ayeyarwaddy	Kyangin	WVI						1
Ayeyarwaddy	Kyonpyaw	SC						1
Ayeyarwaddy	Labutta	Alliance	Merlin	PACT	UNDP	UNICEF	UNDP	6
Ayeyarwaddy	Lemyethna	SC						1
Ayeyarwaddy	Maubin	Alliance						1
Ayeyarwaddy	Mawlamyinegyun	PACT	UNDP					2
Ayeyarwaddy	Myaungmya	WVI						1
Ayeyarwaddy	Ngapudaw	Alliance	UNDP					2
Ayeyarwaddy	Nyaungdon	UNDP	PACT					2
Ayeyarwaddy	Pantanaw	PACT	UNDP					2
Ayeyarwaddy	Patheingyi	MSI	PSI	SC	UNICEF	WVI		5
Ayeyarwaddy	Thabaung	WVI						1
Ayeyarwaddy	Zalun	PACT	UNDP					2
Bago West	Pyay	PSI						1
Mon	Bilin	WCM						1
Yangon	Dagon	MDM	WVI					2
Yangon	Dala	AMI						1
Yangon	Hlaingtharya	MSF-H	WVI					2
Yangon	Hlegu	WVI						1
Yangon	Hmawbi	WVI						1
Yangon	Insein	MDM						1
Yangon	North Okkalapa	MDM	SC					2
Yangon	Seikgyikanaungto	AMI						1
Yangon	Seikkan	WVI						1
Yangon	Shwepyithar	MDM	SC					2
Yangon	Dagon Myothit(South)	MDM	WVI					2
Yangon	Thaketa	MDM	SC					2
Yangon	Thanlyin	MDM	WVI					2
Yangon	Twantay	MSF-CH	AMI					2



The Myanmar Information Management Unit (MIMU) is an Inter-Agency Standing Committee (IASC) common service providing information management services, including GIS mapping and analysis, to the humanitarian and development actors both inside and outside of Myanmar.

Source: Boundaries-Ministry of Health 2001, modified by UN RC's Office 2004; Place names-Ministry of Home Affairs (GAD) and Ministry of Agriculture & Irrigation (SLRD) translated by MIMU; Who/What/Where collected by the MIMU

Map Created by: Myanmar Information Management Unit  
Creation Date: May 2008  
Map ID: MIMU006

0 37.5 75 150 Kilometers

Disclaimer: The names shown and the boundaries used on this map do not imply official endorsement or acceptance by the IASC membership.

