

HIV/AIDS in South-East Asia Region— Situation Update

Summary of the HIV/AIDS Epidemic, South-East Asia Region, 2009

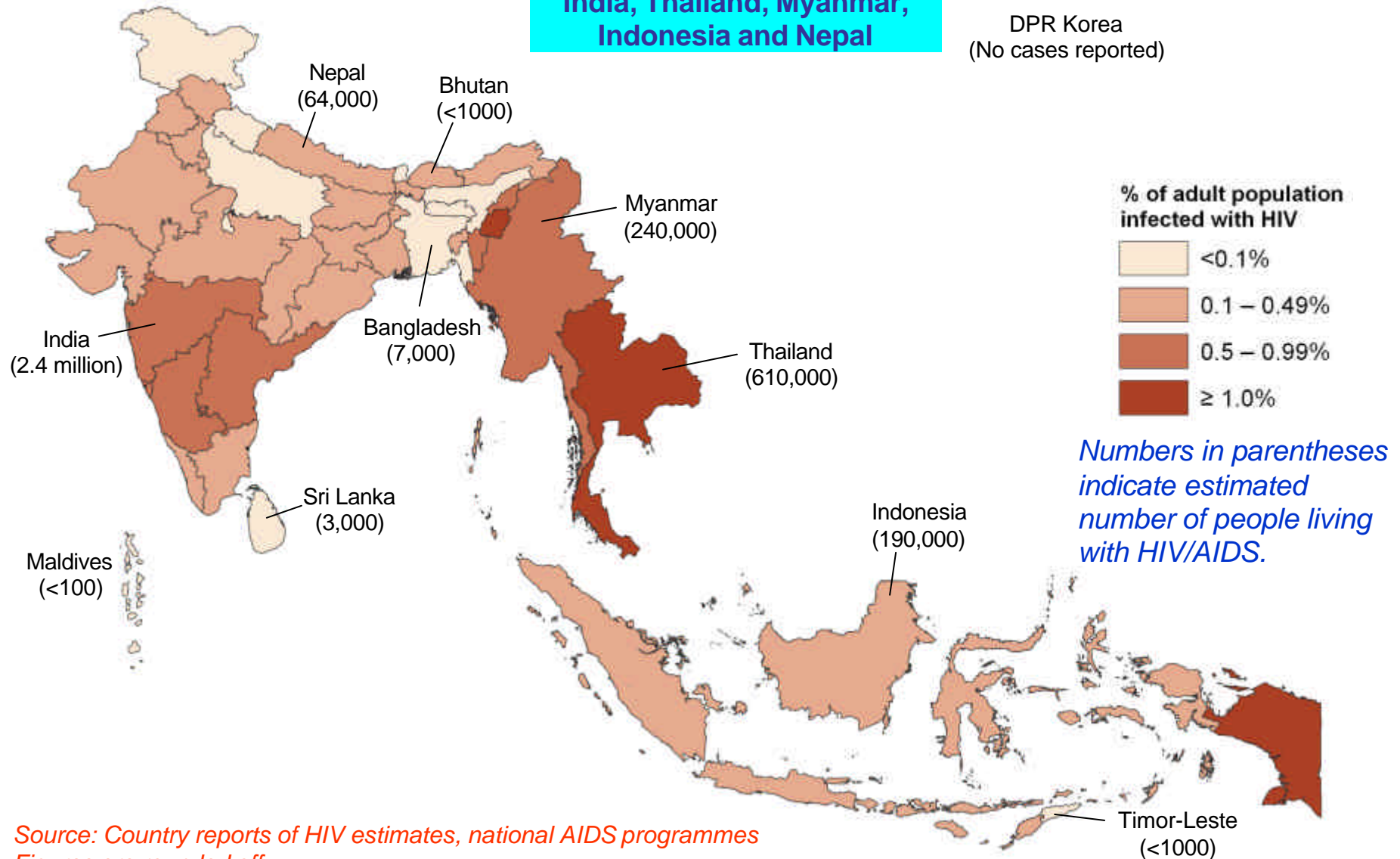
• Number of people living with HIV	3.5 million [3.2 – 4 million]
• Adult Male	2.2 million
• Adult Female	1.3 million [1.2 – 1.6 million]
• % female	37
• Children	130,000 [82,000 – 190,000]
• Adult HIV Prevalence	0.3%
• New HIV Infections	220,000 [190,000 – 260,000]
• AIDS Deaths	230,000 [200,000 – 270,000]

Note: Figures estimated by *Spectrum Model* using surveillance data reported by national AIDS programmes, Member countries, South-East Asia Region. Figures in parentheses indicate range.

Estimated HIV Prevalence, South-East Asia Region, 2009

Five countries account for the majority of HIV/AIDS burden—
India, Thailand, Myanmar, Indonesia and Nepal

DPR Korea
(No cases reported)



Source: Country reports of HIV estimates, national AIDS programmes
Figures are rounded off

HIV/TB Burden, South-East Asia Region, 2009

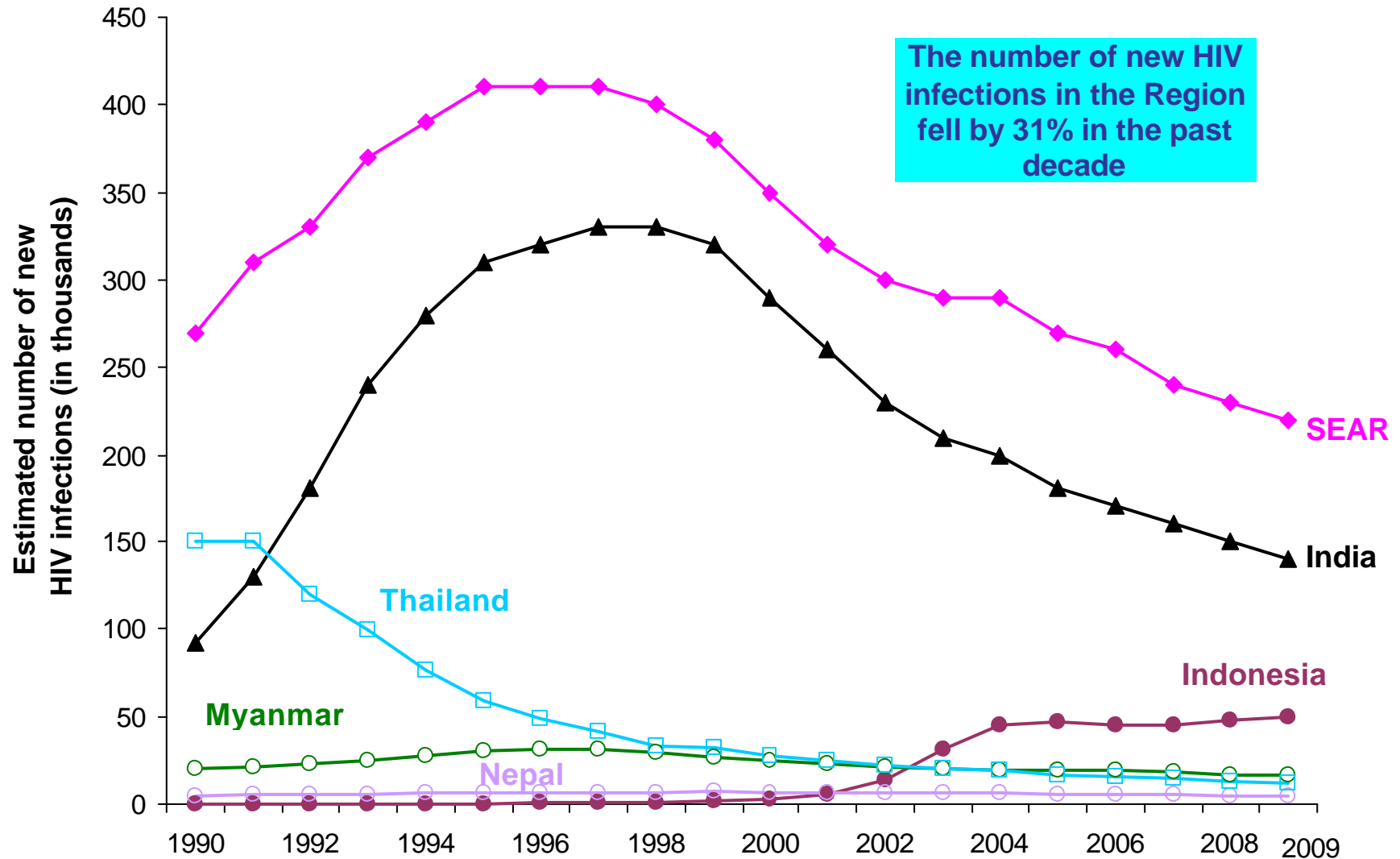
Country	Estimated people living with HIV	Adult population infected with HIV	Prevalence of all forms of TB		HIV prevalence among new TB cases	Incidence of HIV-positive TB cases	
			Number	Rate per 100 000 population		Number	Rate per 100 000 population
Bangladesh	7 000	<0.1%	690 000	426	0.2%	580	<1
Bhutan	<1 000	0.1%	1 300	179	<0.1%	36	5.1
DPR Korea	NA	NA	100 000	423	NA	200	<1
India	2 400 000	0.3%	3 000 000	249	6.4%	130 000	11
Indonesia	190 000	0.2%	660 000	285	2.8%	12 000	5.4
Maldives	<100	<0.1%	150	47	<0.1%	<10	<1
Myanmar	240 000	0.6%	300 000	595	9.2%	22 000	44
Nepal	64 000	0.4%	71 000	241	2.4%	1 100	3.8
Sri Lanka	3 000	<0.1%	20 000	101	0.1%	32	<1
Thailand	610 000	1.4%	130 000	189	17%	16 000	23
Timor-Leste	<1 000	0.1%	8 400	743	1.1%	<10	<1
Total	3.5 million	0.3%	5 million	278	5.7%	180 000	10

Source: Country reports, national AIDS programmes; Global TB Control WHO Report, 2010

Note: Figures are rounded off. Data shown are the best available estimates

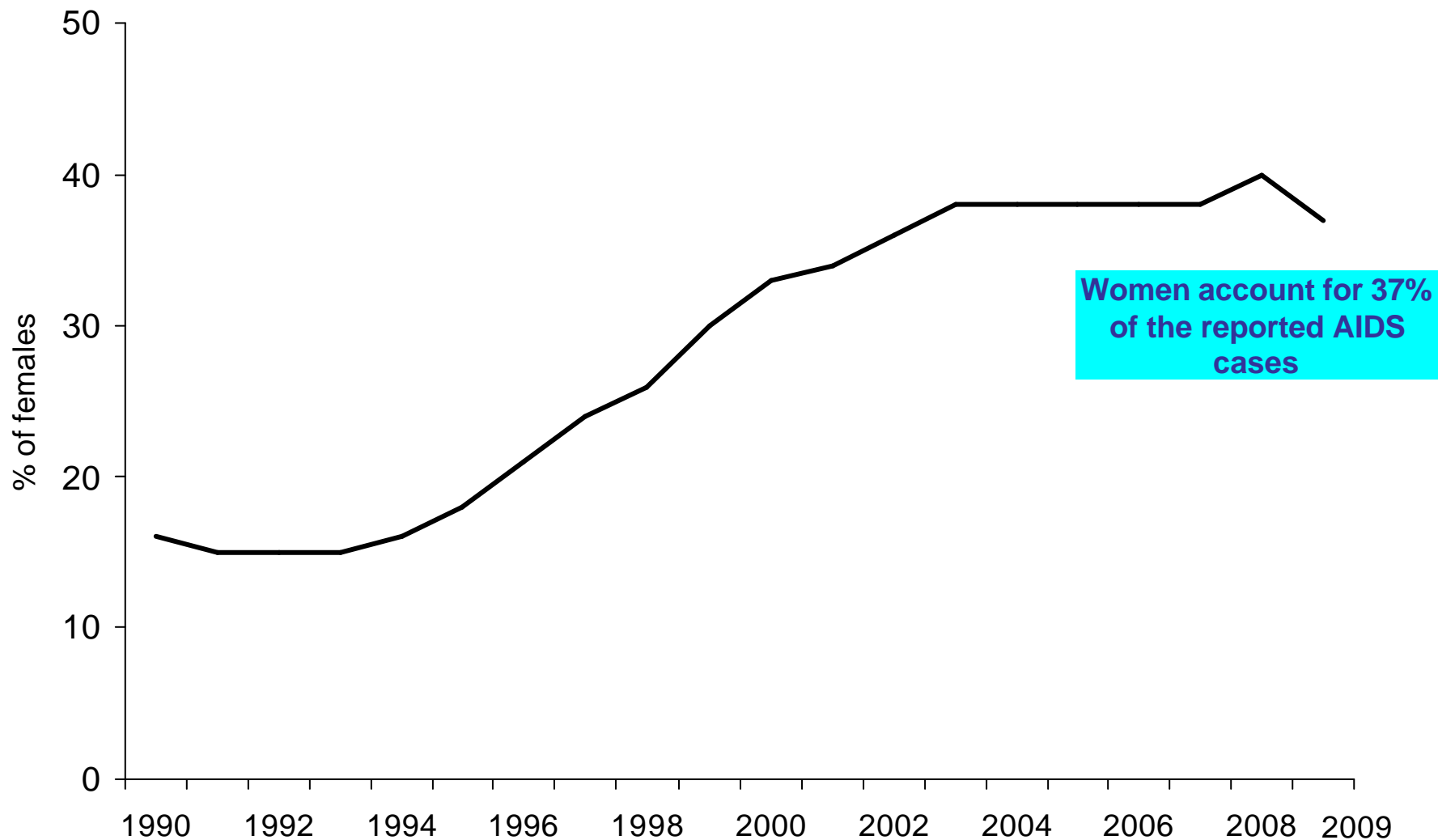
TB=tuberculosis; NA=not available

Estimated Number of New HIV Infections in South-East Asia Region, 1990-2009



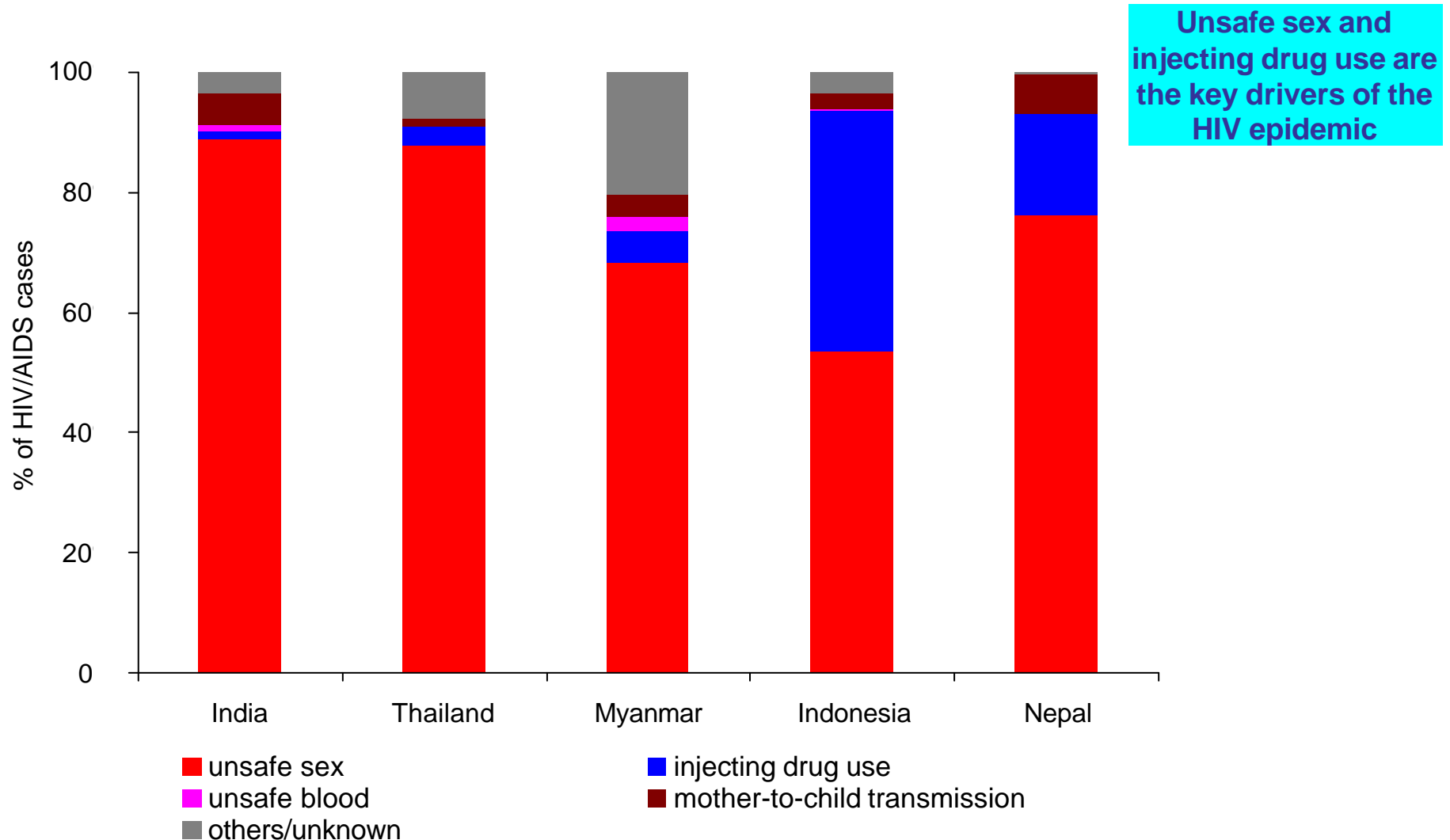
Note: Number of new infections estimated by Spectrum model using surveillance data reported by national AIDS programmes, Member countries, South-East Asia Region

Percentage of Females Among Reported AIDS Cases, South-East Asia Region, 1990–2009



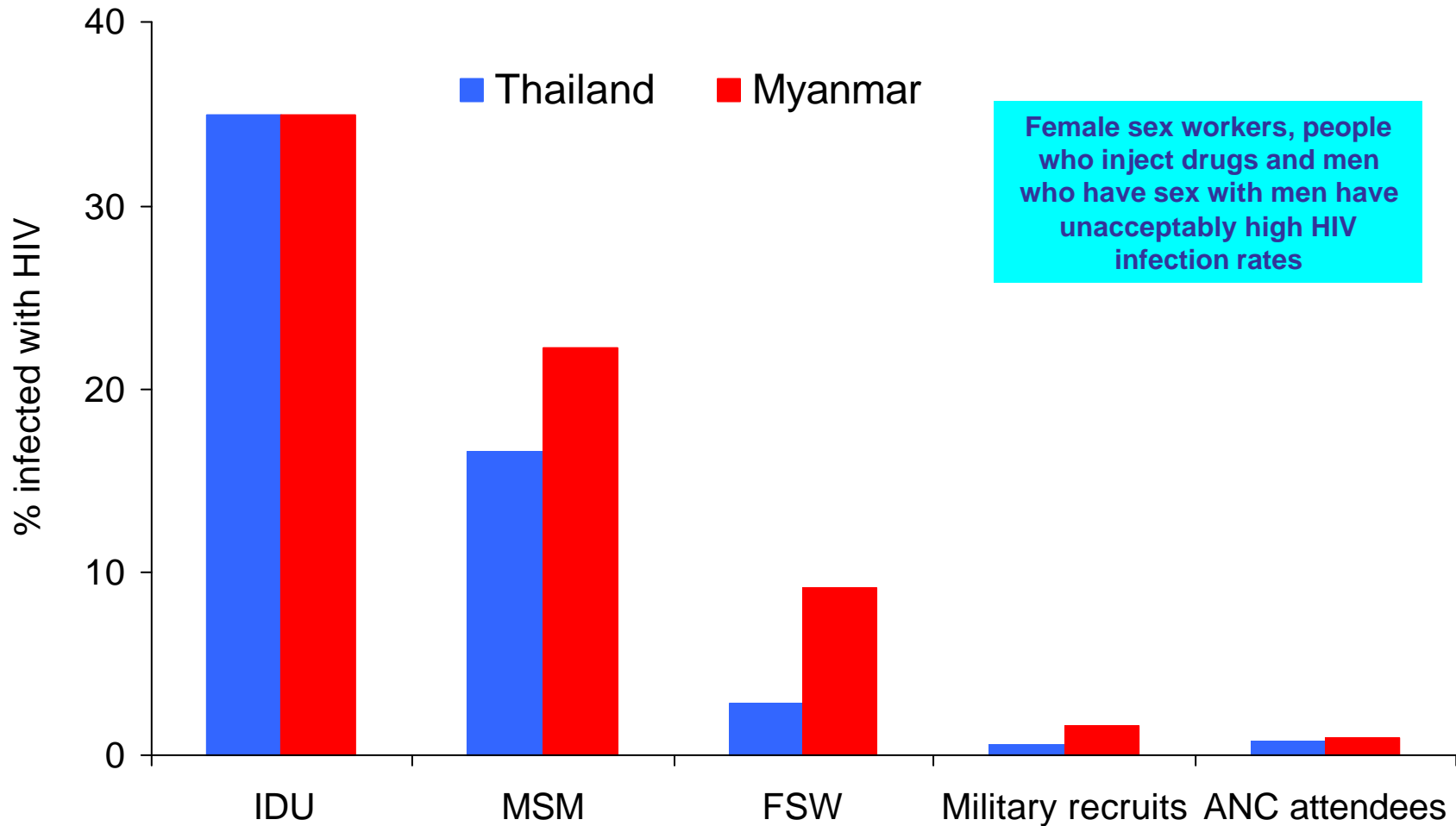
Source: Country reports, national AIDS programmes, Member countries, South-East Asia Region

Distribution of Reported HIV/AIDS Cases by Mode of Transmission, South-East Asia Region, 2009



Source: Country reports, national AIDS programmes, Member countries, South-East Asia Region.

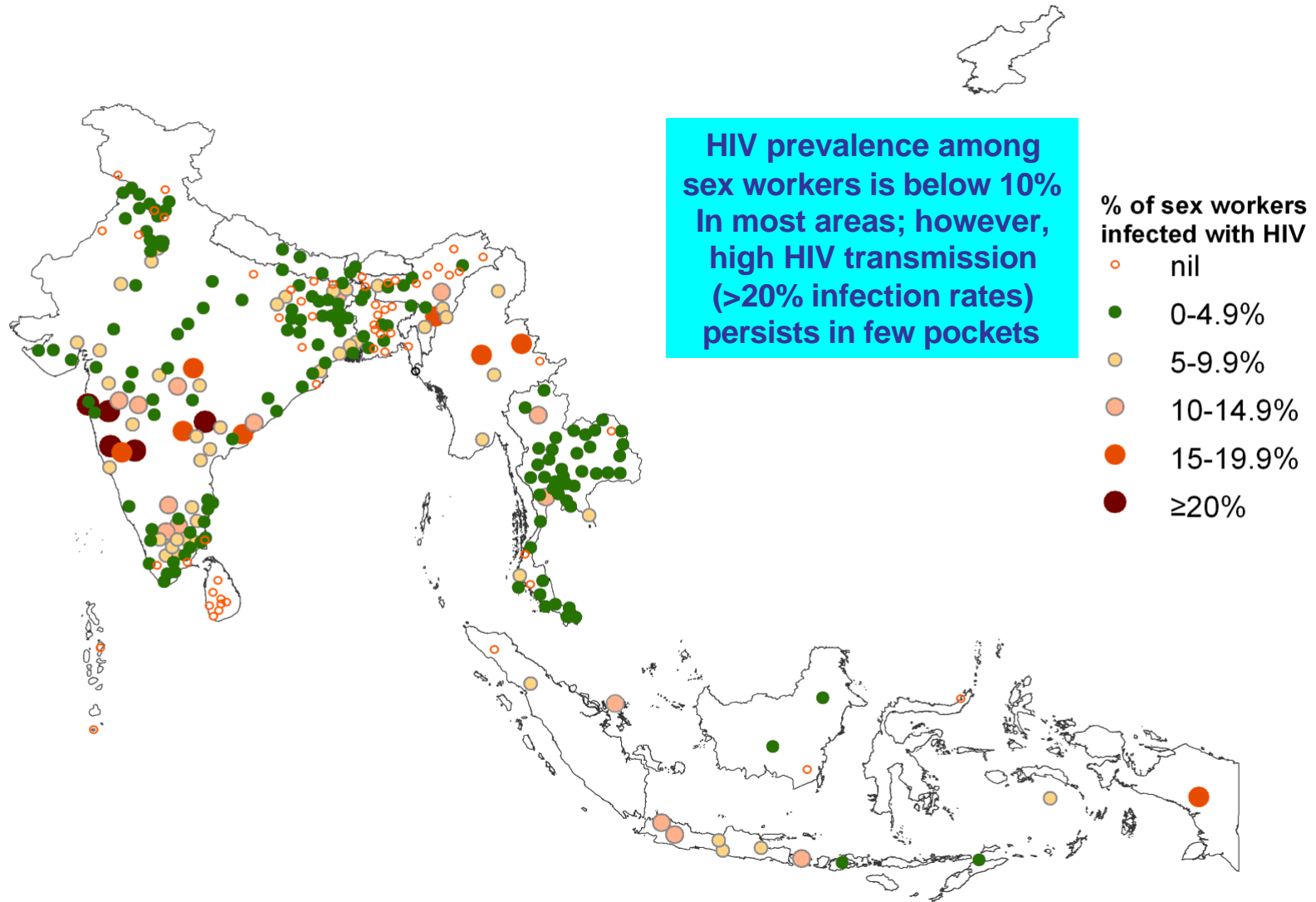
HIV Prevalence by Population Group, Myanmar and Thailand, 2009



Sources: 2009 HIV sentinel surveillance report, National AIDS Programme, Ministry of Health, Myanmar; 2009 HIV sentinel surveillance report, National AIDS Programme, Ministry of Public Health, Thailand.

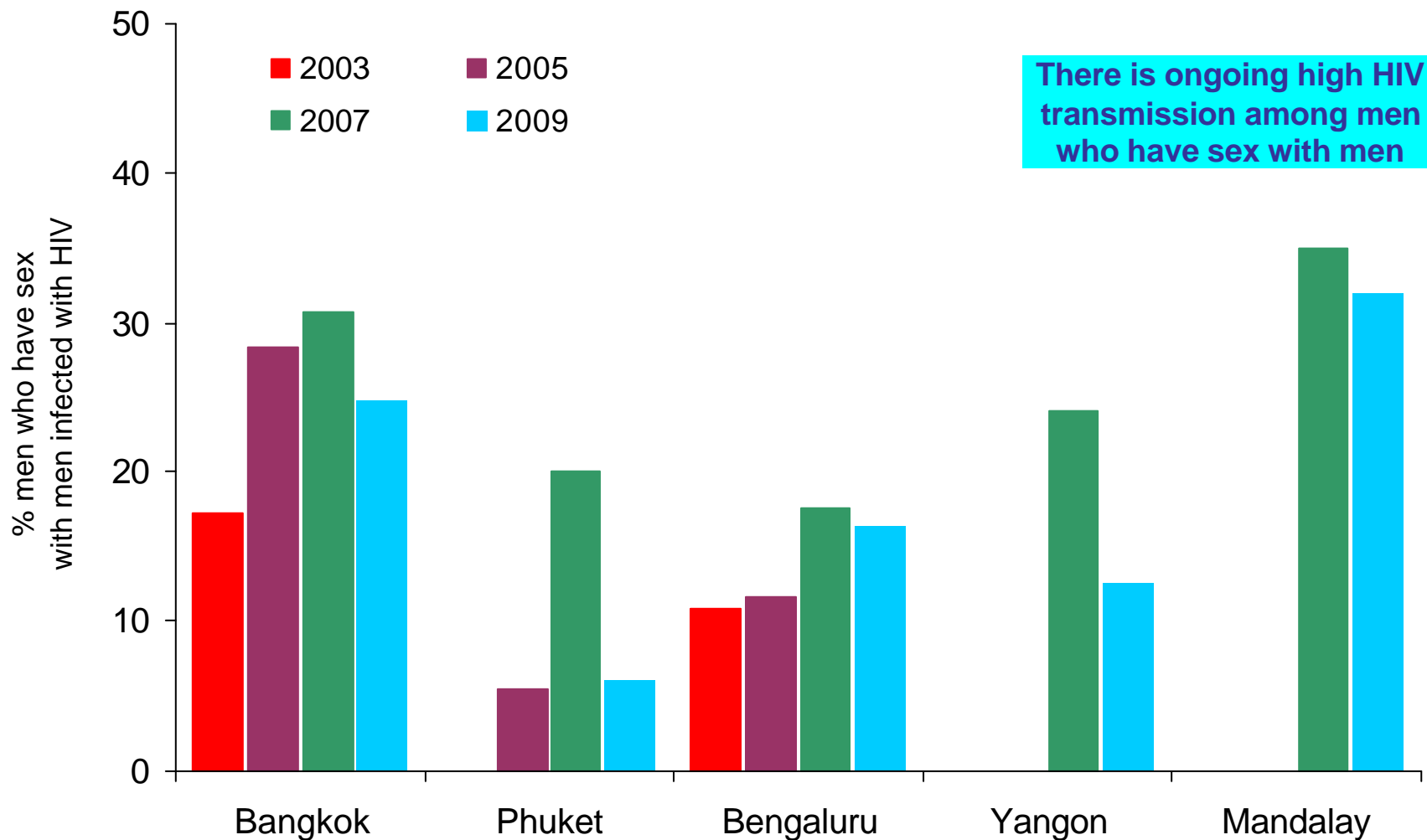
PWID=people who inject drugs; MSM=men who have sex with men; FSW=female sex workers; ANC=antenatal clinic

Percentage of Female Sex Workers Infected with HIV, South-East Asia, 2007-2010



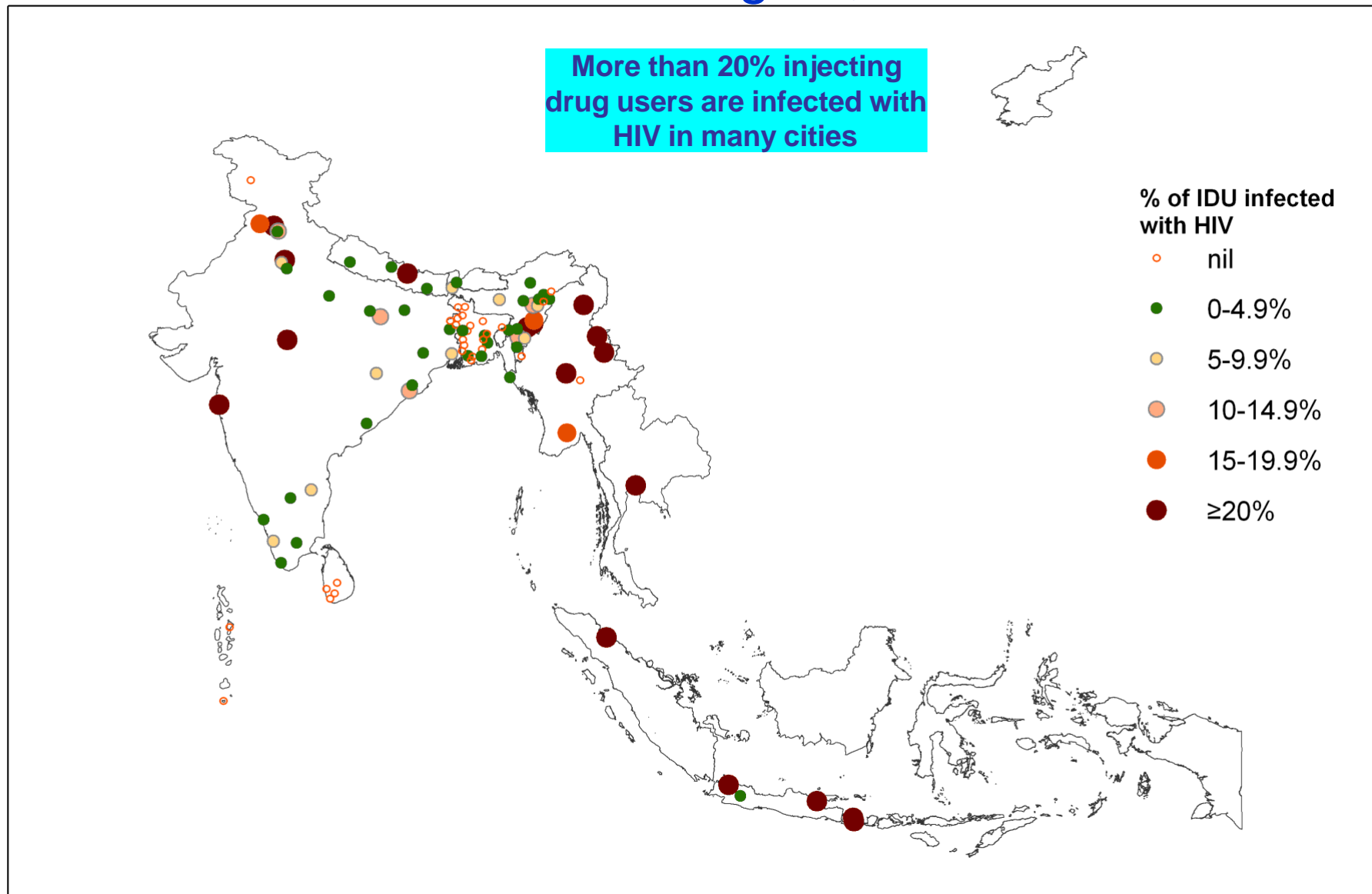
Source: Sentinel surveillance data reported by national AIDS programmes. The latest available surveillance data is used from each country: Bangladesh, Indonesia-2007; Maldives-2008, India, Nepal (2008-2009), Myanmar, Sri Lanka, Thailand, Timor-Leste-2010

HIV Prevalence Among Men Who Have Sex With Men in Selected Cities, South-East Asia Region, 2003–2009



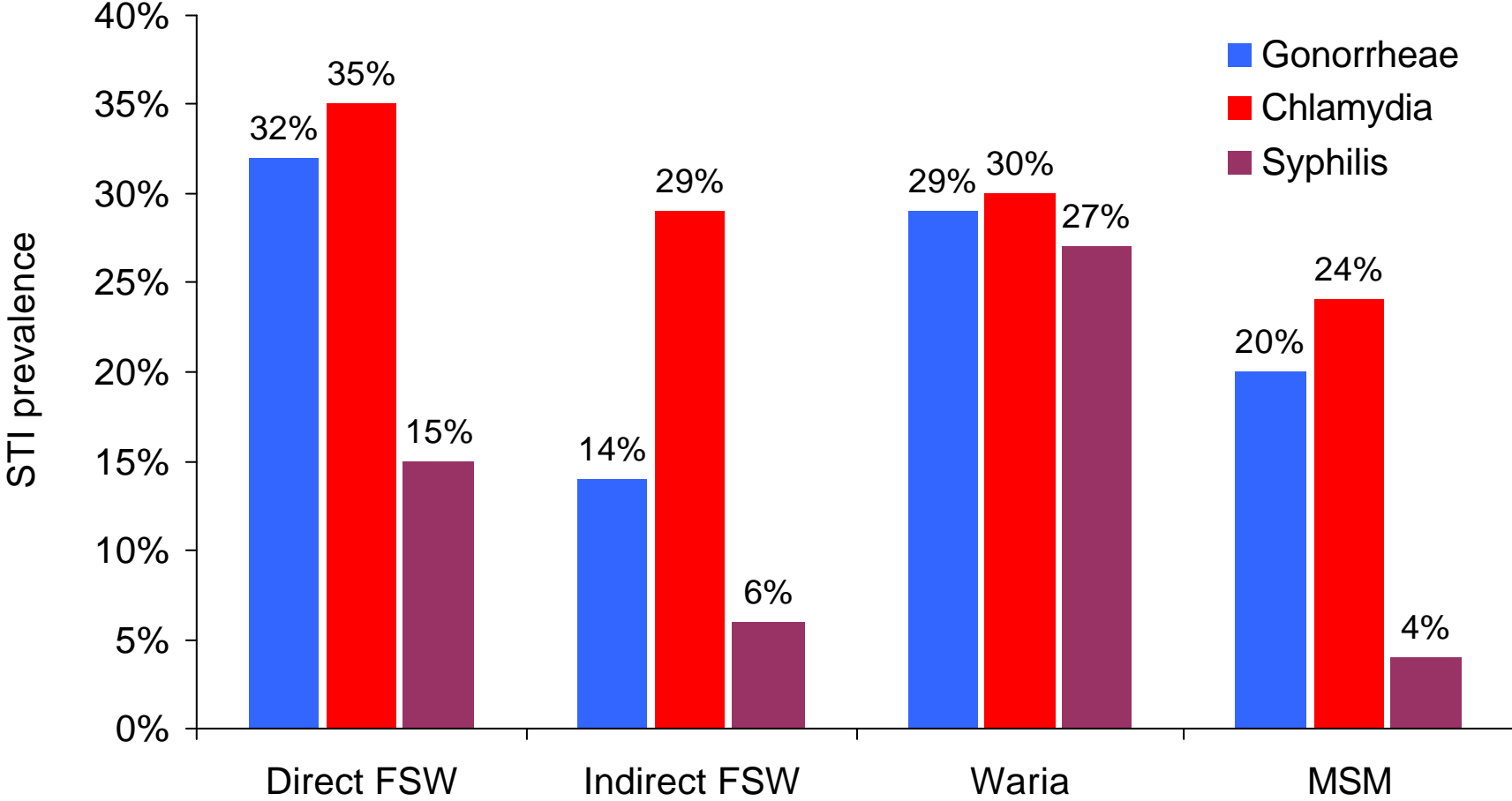
Source: Sentinel surveillance reports, national AIDS programmes, South-East Asia Region.

HIV Prevalence Among People Who Inject Drugs, South-East Asia Region, 2007–2009



Source: Sentinel surveillance data reported by national AIDS programmes. The latest available surveillance data is used from each country: Bangladesh, Indonesia-2007; India, Maldives-2008, Myanmar, Nepal, Sri Lanka, Thailand-2009

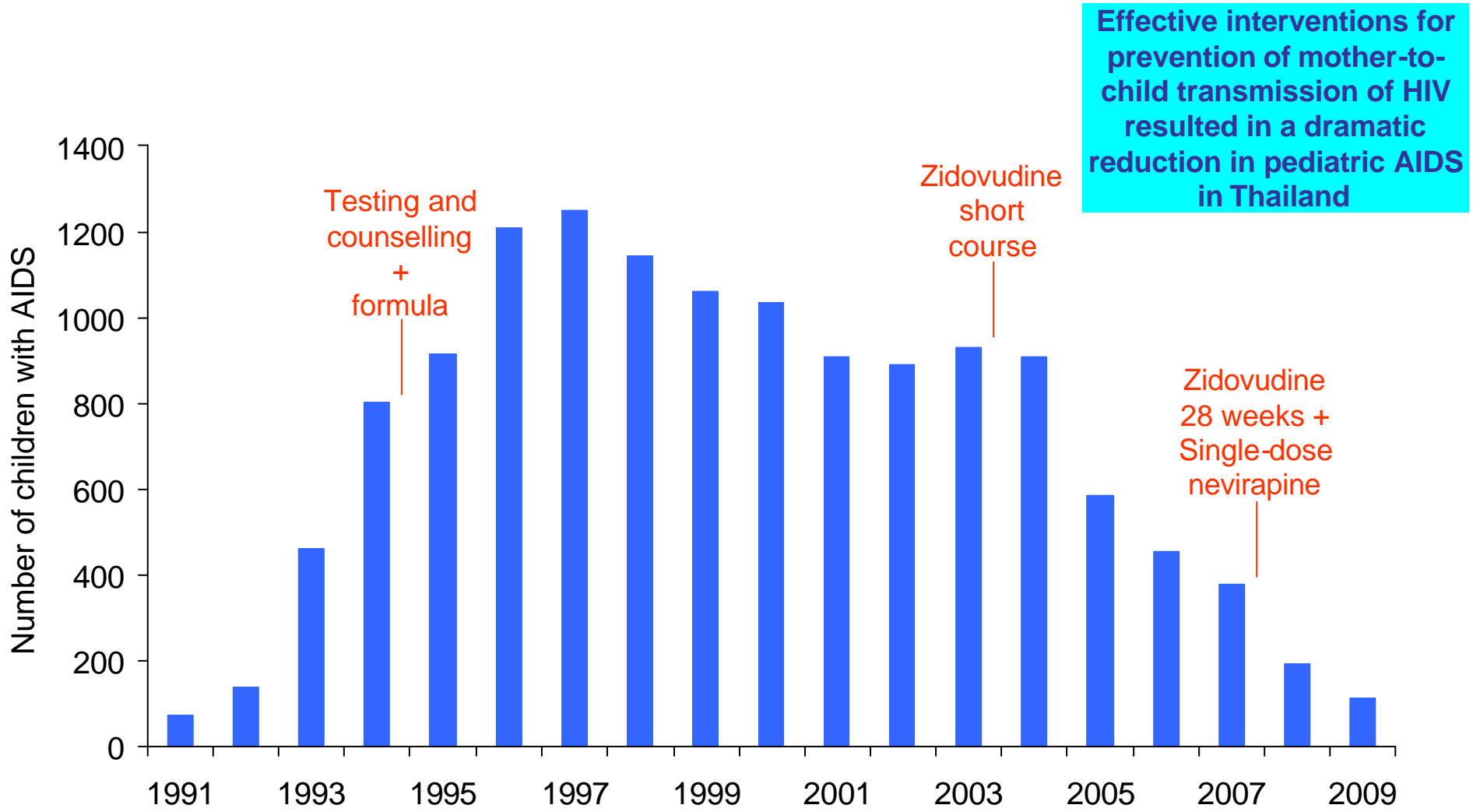
Prevalence of Sexually Transmitted Infections (STI), by Population Group, Indonesia, 2007



Source : Integrated bio behavioral survey 2007, Ministry of Health, Indonesia
FSW=female sex worker; MSM=me who have sex with men

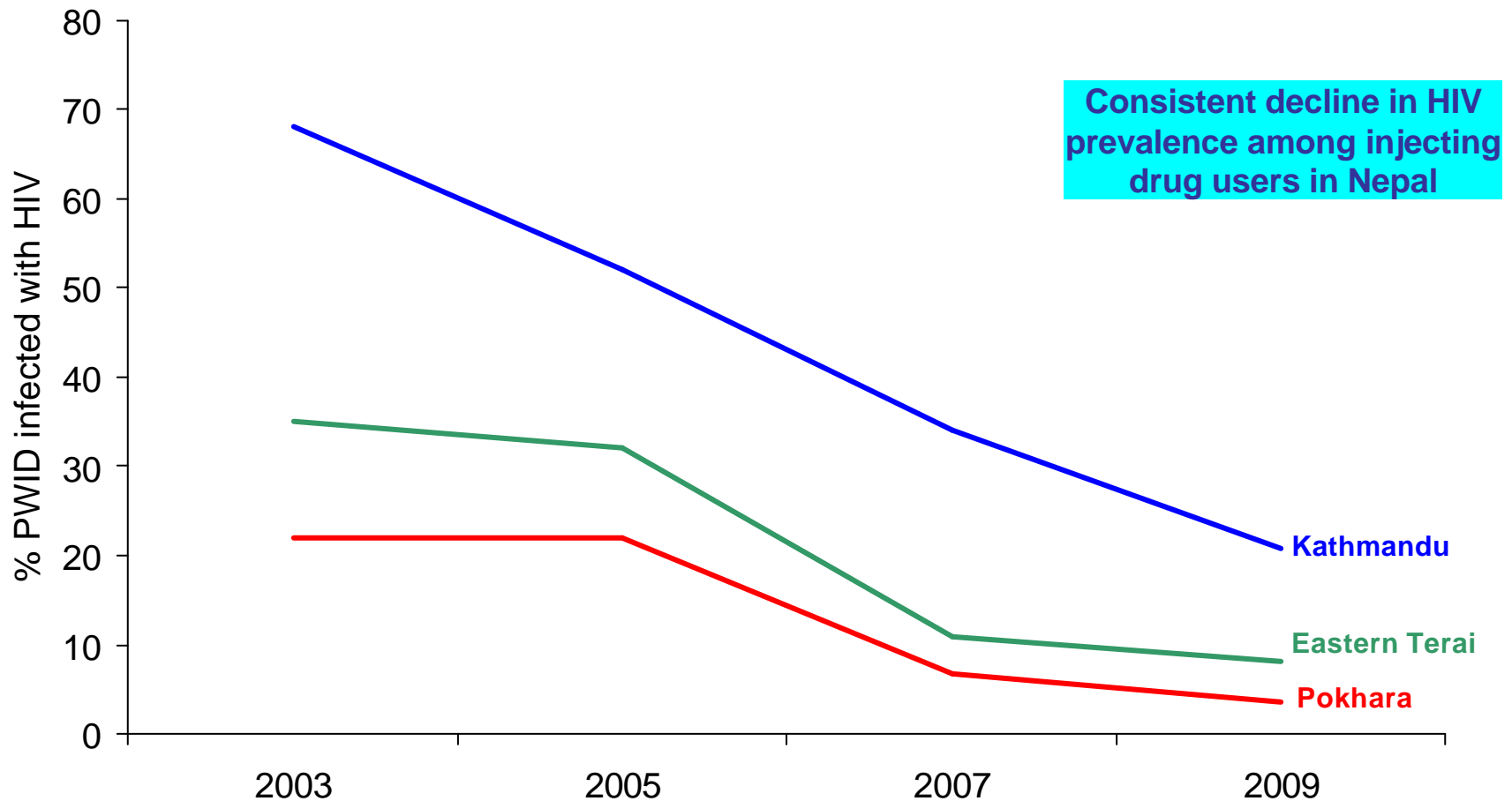
Key Achievements

Number of Reported AIDS Cases Among Children (aged 0–4 years), Thailand, 1991–2009



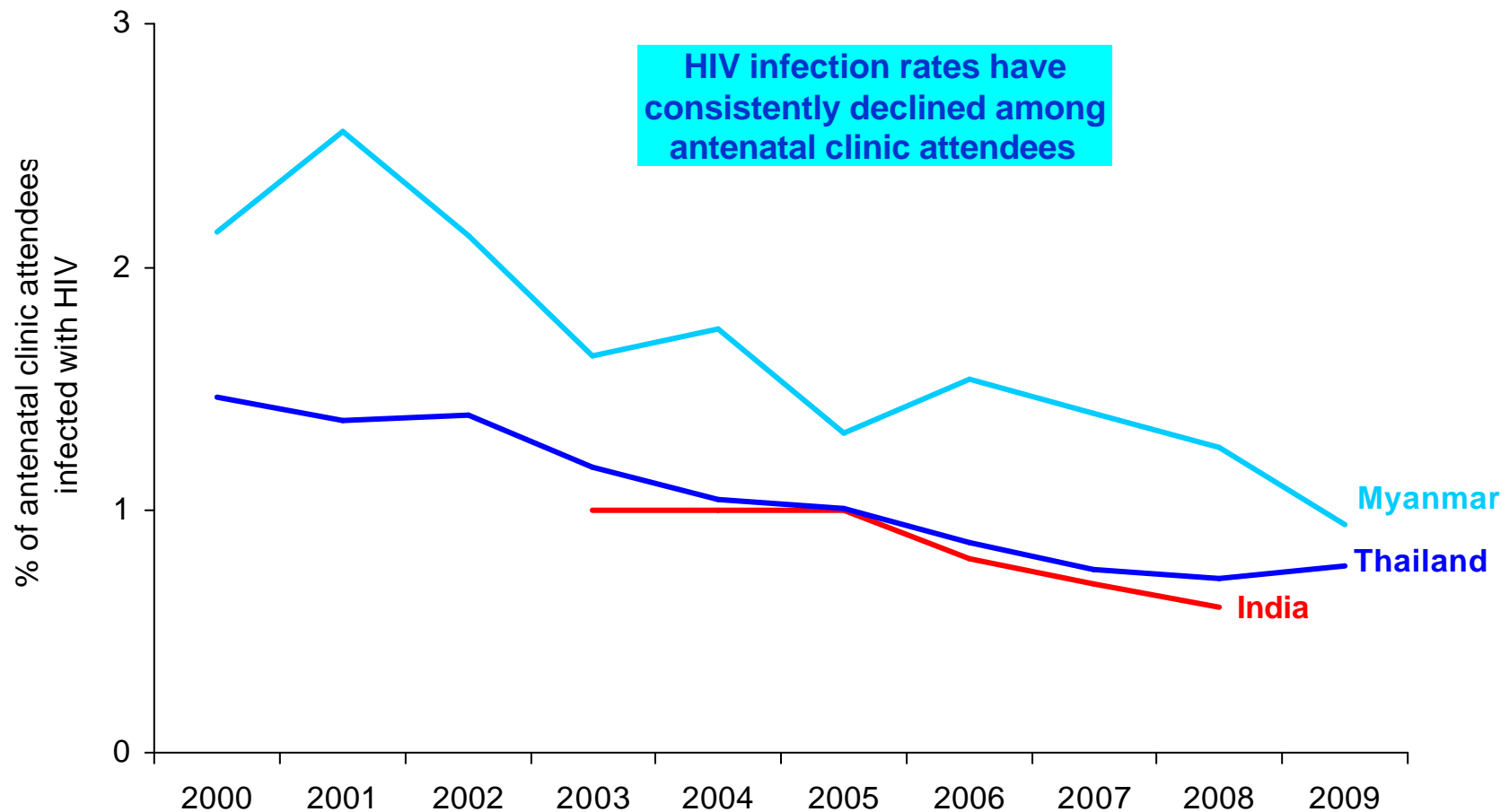
Source: Bureau of Epidemiology, Department of Diseases Control, Ministry of Public Health, Thailand.

HIV Prevalence Among People Who Inject Drugs (PWID), Nepal, 2002-2009



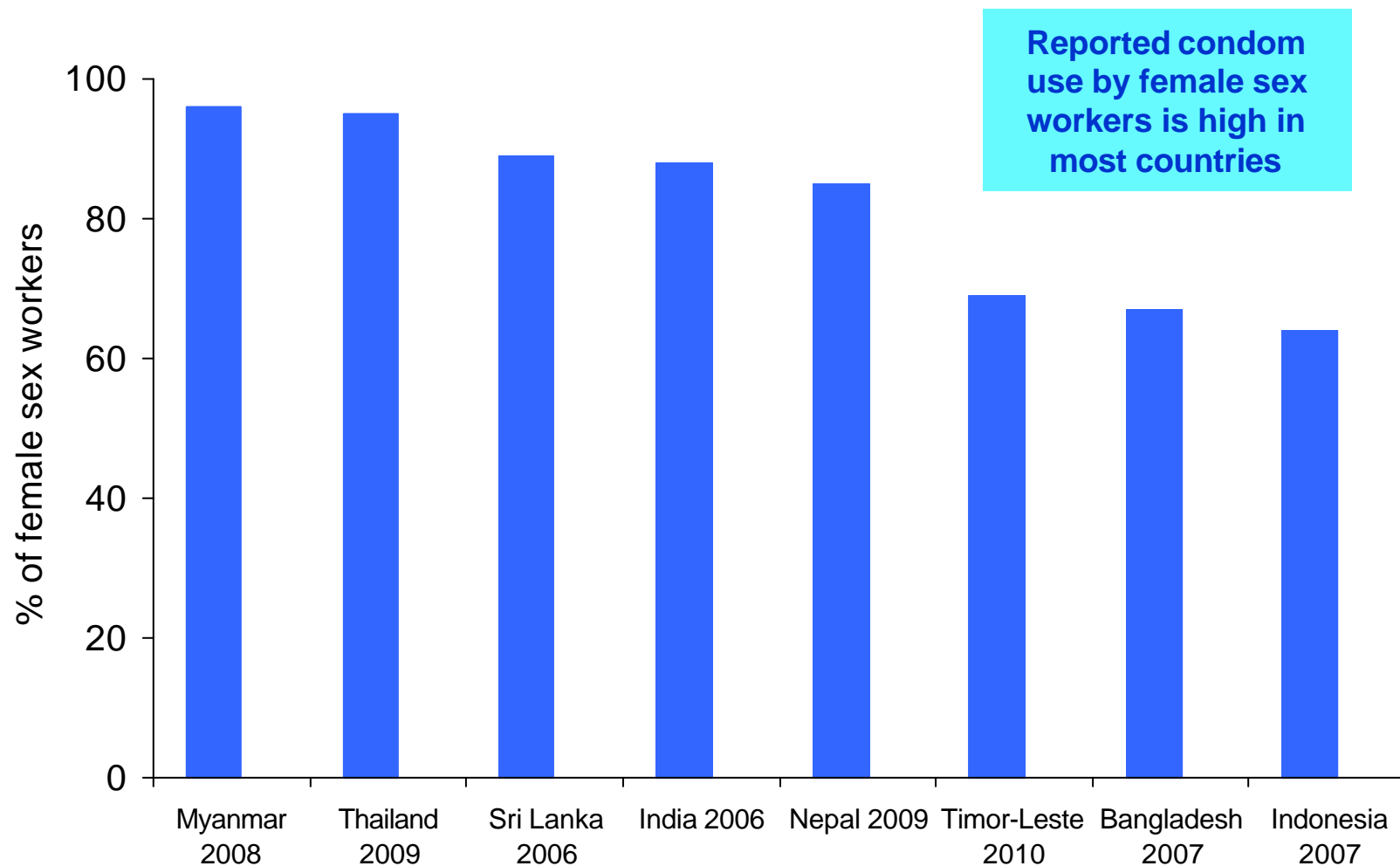
Source: Integrated Biological and Behavioural Survey among PWID, National Centre for AIDS and STD Control, Ministry of Health, Nepal.

HIV Prevalence Among Antenatal Attendees, in High HIV Burden Countries, 2000-2009



Sources: Sentinel surveillance reports, National AIDS Programme, Myanmar; Sentinel surveillance reports, National AIDS Control Organization, India; Sentinel surveillance reports, National AIDS Programme, Thailand.

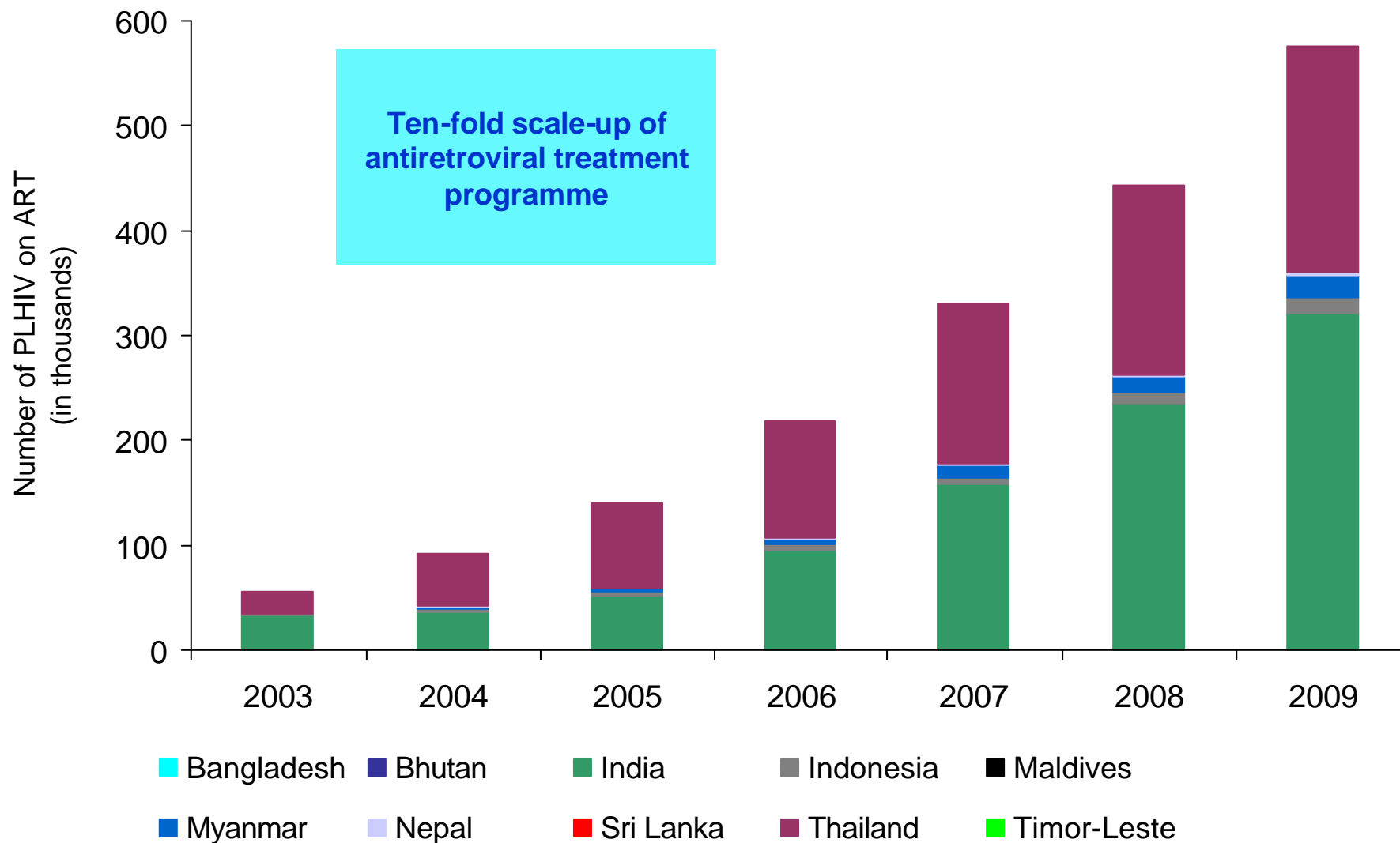
Percentage of Female Sex Workers Reporting Condom Use with Their Most Recent Client, South-East Asia Region



Source: Reports of behavioural surveys, national AIDS programmes, Member countries, South-East Asia Region.

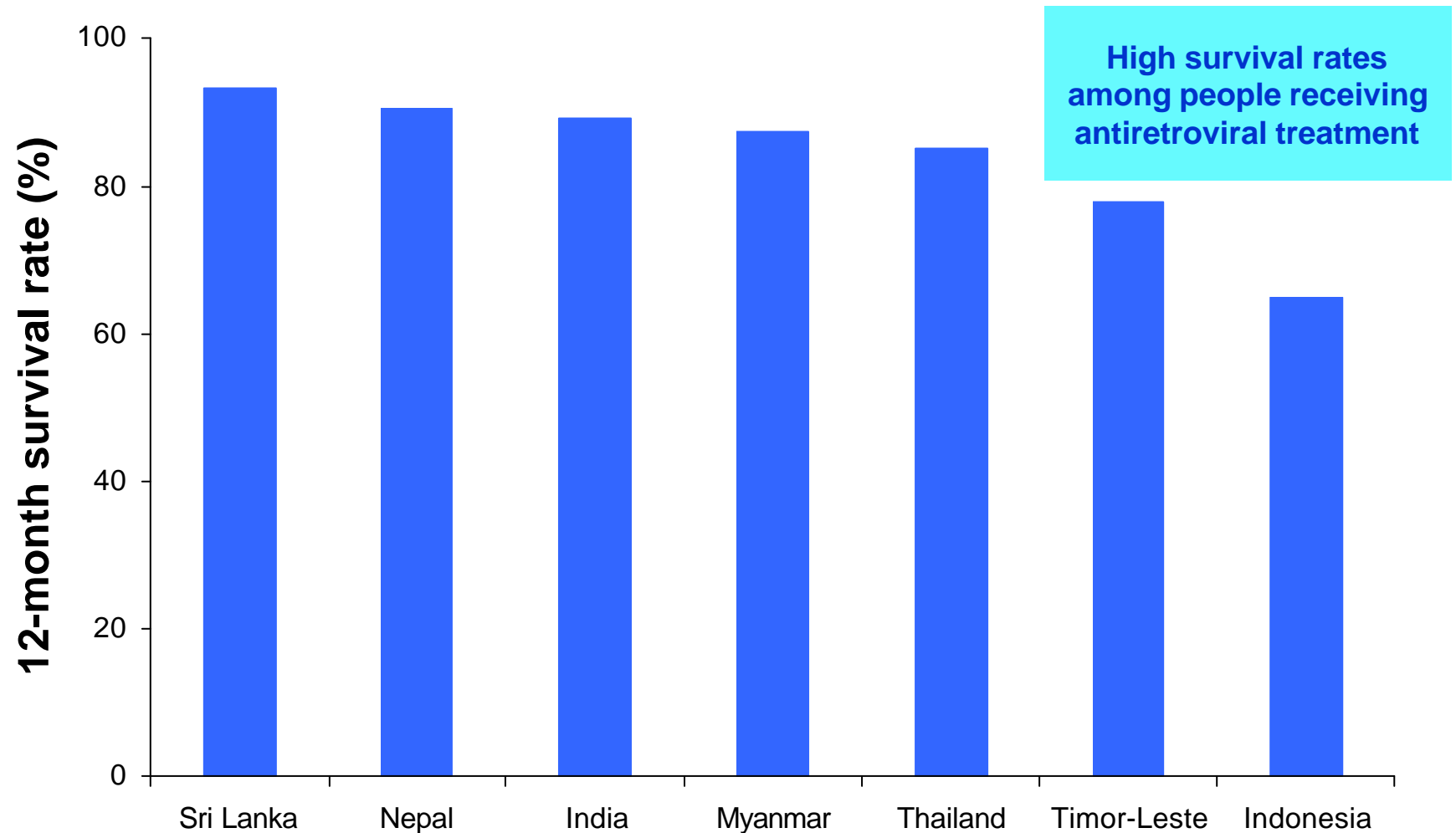
Note: The latest available data for each country was used.

Number of People with Advanced HIV Infection Receiving Antiretroviral Treatment, by Country, 2003–2009



Source: 2009 universal access country reports, South-East Asia Region.

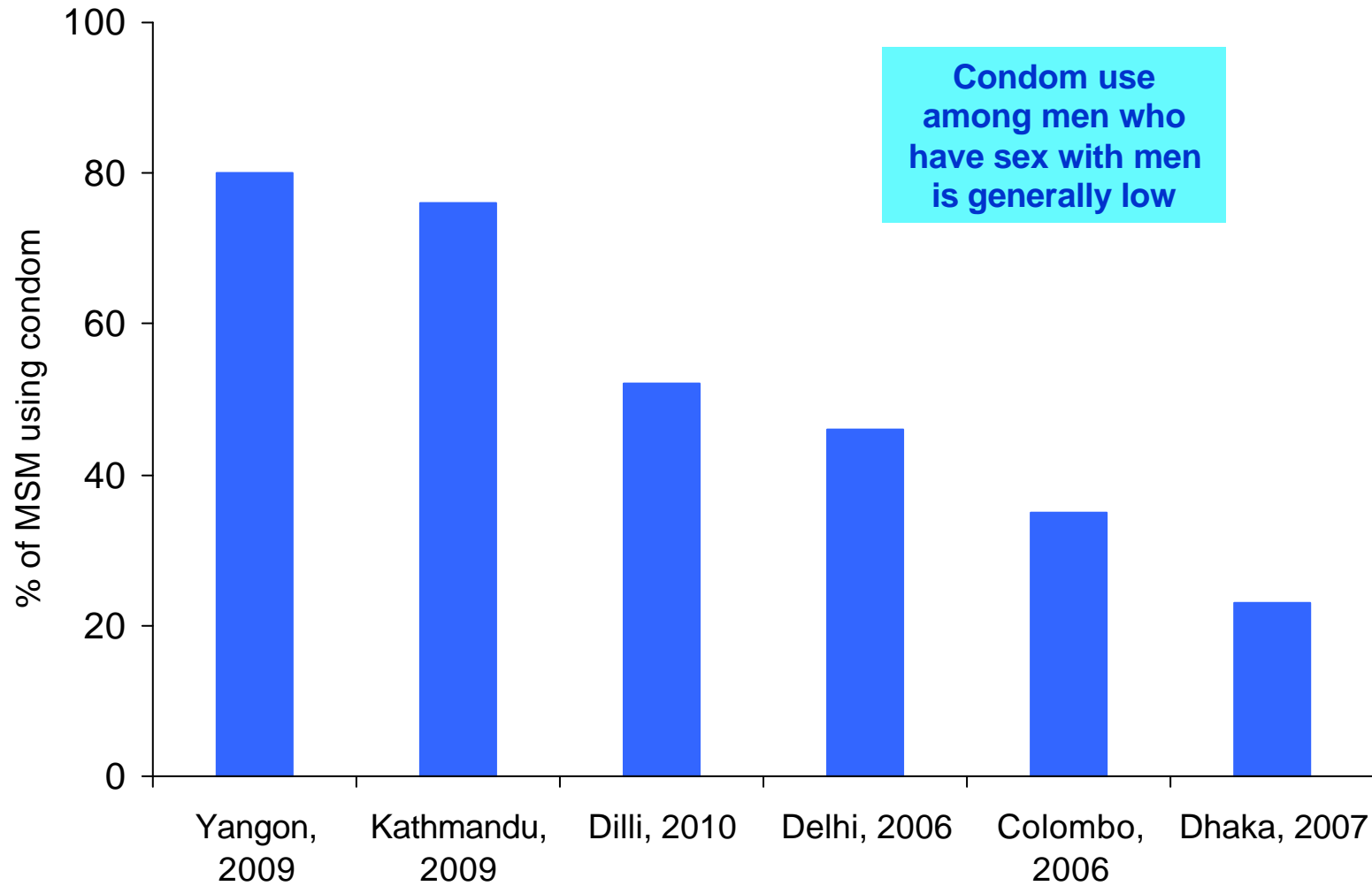
Percentage of Patients Surviving at 12 Months After Start of Antiretroviral Treatment, South-East Asia, 2009



Source: Universal access country reports, 2009

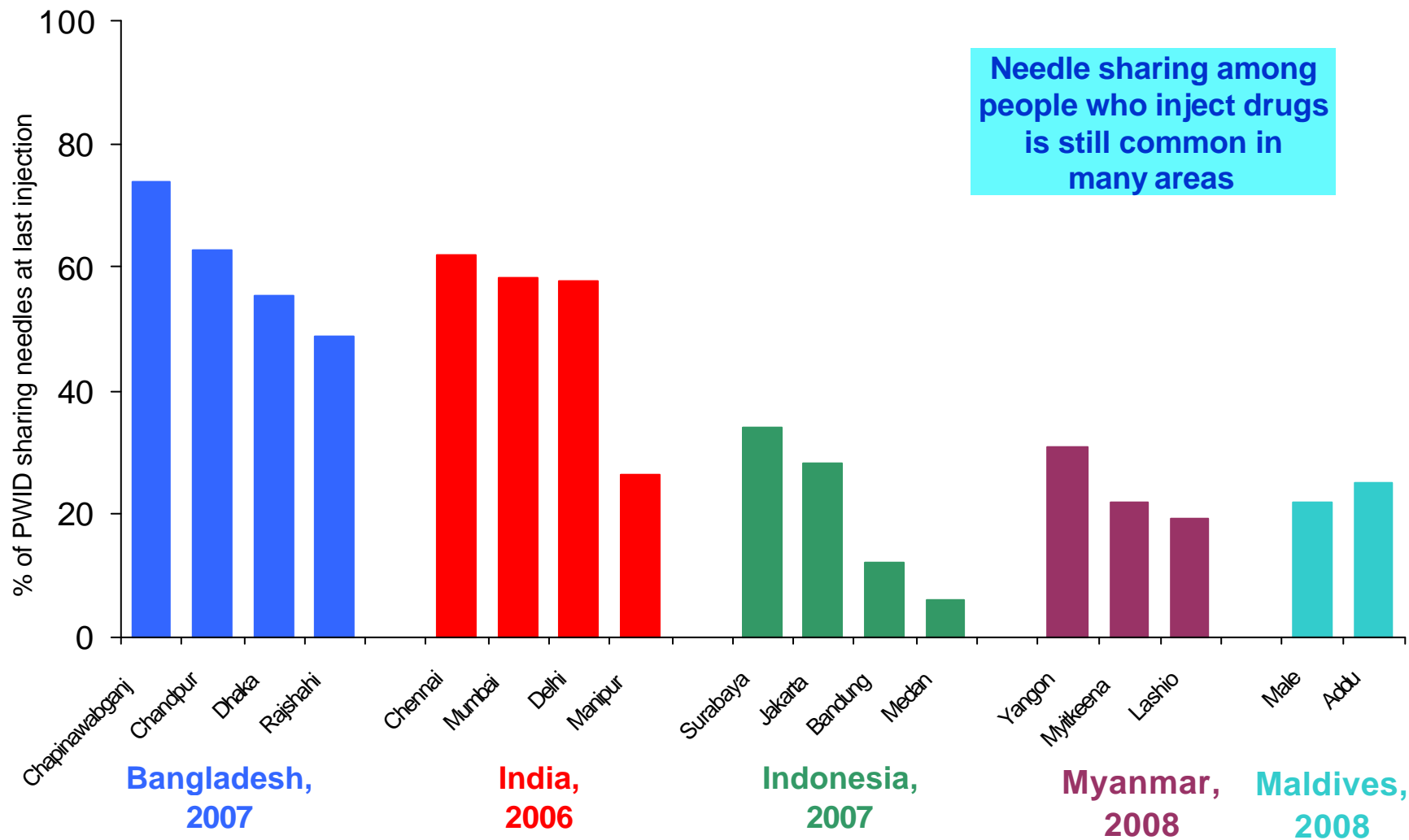
Issues and Challenges

Percentage of Men Who Have Sex With Men Reporting Condom Use During Last Sex with a Male Partner, South-East Asia Region



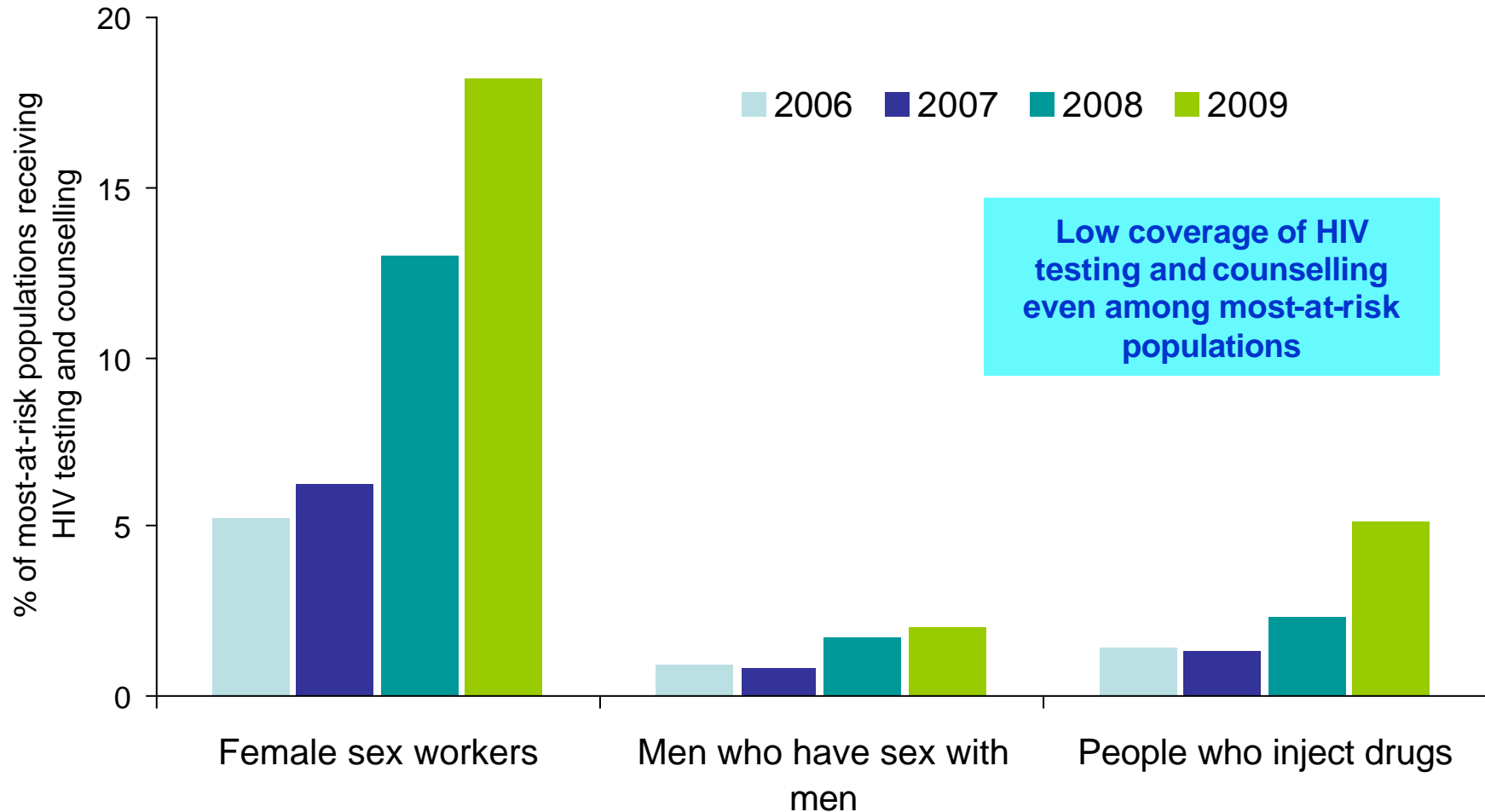
Source: Reports of behavioural surveys, national AIDS programmes, Member countries, South-East Asia Region.
Note: The latest available data for each country was used.

Percentage of People Who Inject Drugs Sharing Injecting Equipment at Last Injection, Selected Cities, South-East Asia Region



Source: Reports of behavioural surveys, national AIDS programmes, Member countries, South-East Asia Region.
 Note: The latest available data for each country was used. PWID=people who inject drugs

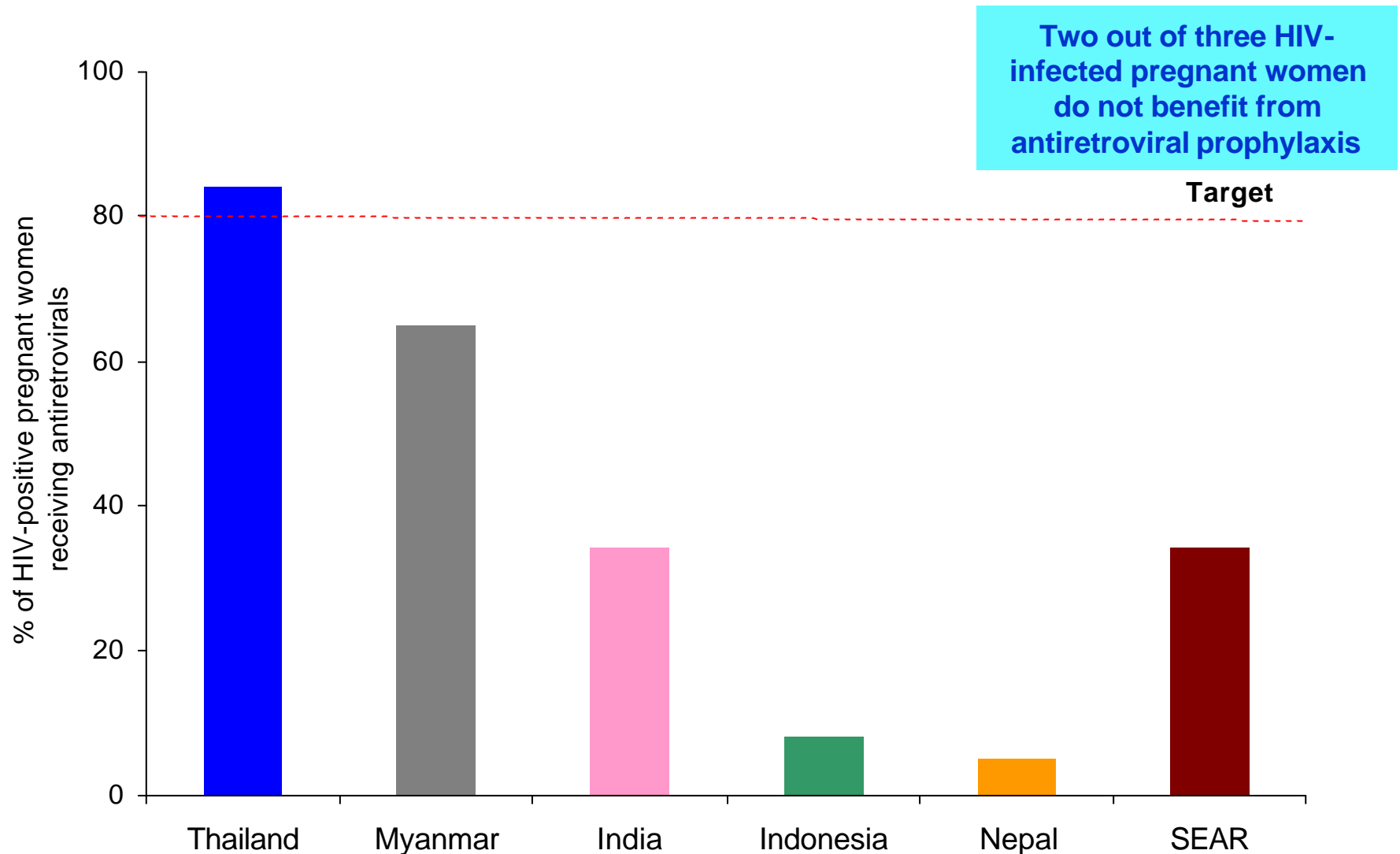
Percentage of Most-at-risk Populations Receiving HIV Testing and Counselling, Myanmar, 2006–2009



Source: 2009 Annual Progress Report, National AIDS Programme, Myanmar.

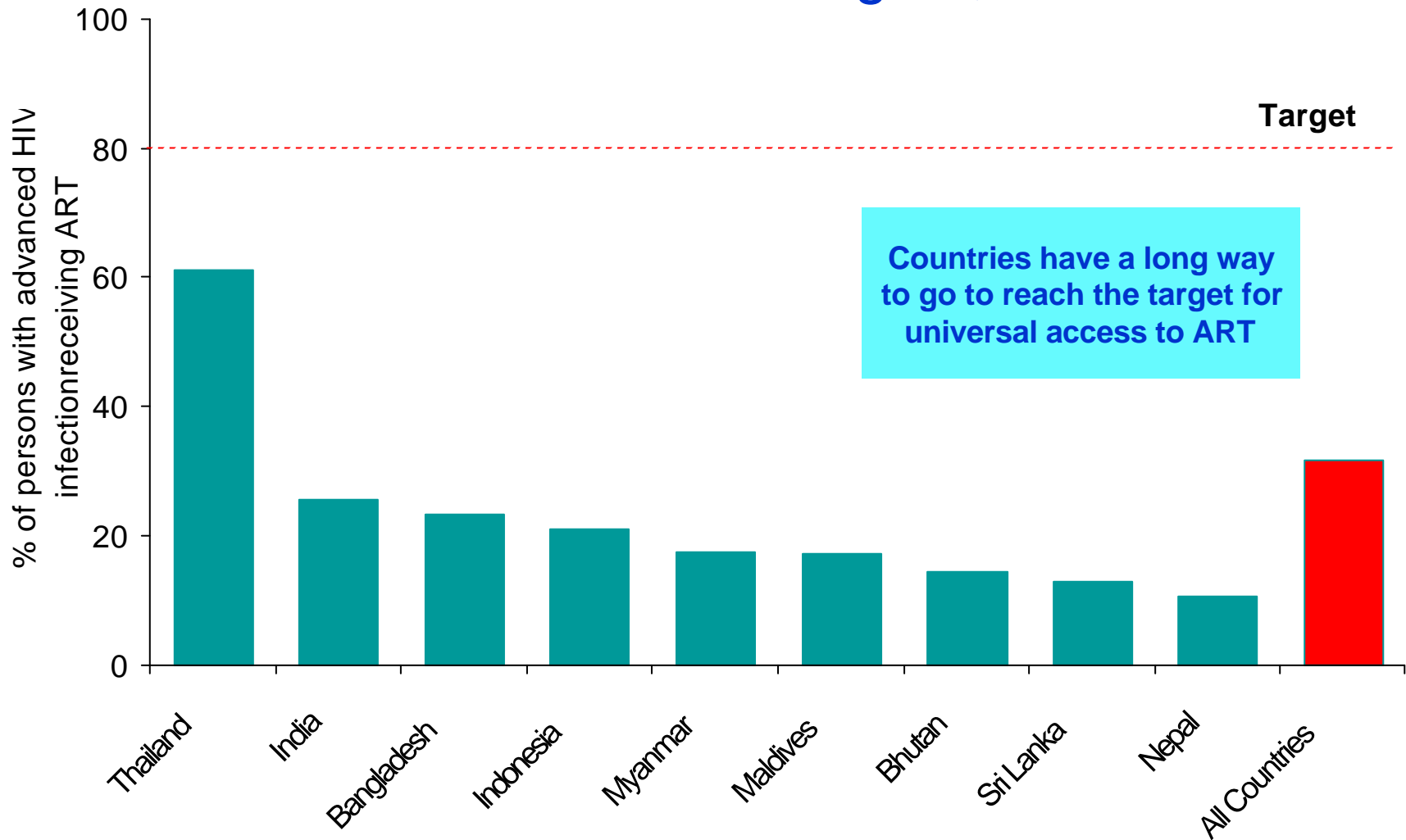
Note: Numerator is reported number of FSW, MSM and PWID receiving HIV testing and counselling during 2006 to 2009; denominator is the estimated population size of FSW, MSM and PWID.

Percentage of HIV-infected Pregnant Women Receiving Antiretroviral Prophylaxis, South-East Asia Region, 2009



Source: 2009 universal access country reports, South-East Asia Region.
SEAR=South-East Asia Region.

Coverage with Antiretroviral Therapy (ART), South-East Asia Region, 2009



Note: Numerator is the number of people on ART reported by national AIDS programmes. Denominator is the estimated number of people in need of treatment based on CD4 cell count <350/cmm

Source: Universal access country reports, 2009.

ART=antiretroviral treatment; PLHIV=people living with HIV.

Other Challenges in Combating HIV/AIDS

- Stigma and discrimination
- Limited capacity of health systems in scaling-up interventions
- High prices of antiretroviral drugs
- Lack of sustained funding

Summary

- Although the HIV/AIDS epidemic has stabilized in many countries, some population groups have unacceptably high HIV infection rates
- Despite the existence of effective interventions to prevent HIV transmission from mother-to-child, two out of three HIV-infected pregnant women do not benefit from these interventions
- There has been a remarkable scale-up of the antiretroviral treatment programme yet only a third of those who need treatment are receiving it
- Key future priorities include:
 - reducing HIV transmission among most-at-risk populations
 - early diagnoses of HIV and earlier start of treatment
 - eliminating mother-to-child transmission of HIV
 - strengthening health systems capacity to scale-up interventions

Thank You

For further information, please refer to
HIV/AIDS in South-East Asia Region:
Progress Report 2010