



### Earthquake in Tanah Datar District, West Sumatra Province, Republic of Indonesia

#### Type of Incidence

Earthquake

#### Date of Incidence

Local time near the Epicenter : Tuesday, 6 March 2007 10:49:41

Universal Time (UTC) : Tuesday, 6 March 2007 03:49:41

#### Earthquake Details

Magnitude : 5,8 Richter Scale (BMG); 6.3 Richter Scale (USGS)

Depth : 33 km (BMG); 30 km (USGS)

Epicentre : 0.536S, 100.498E

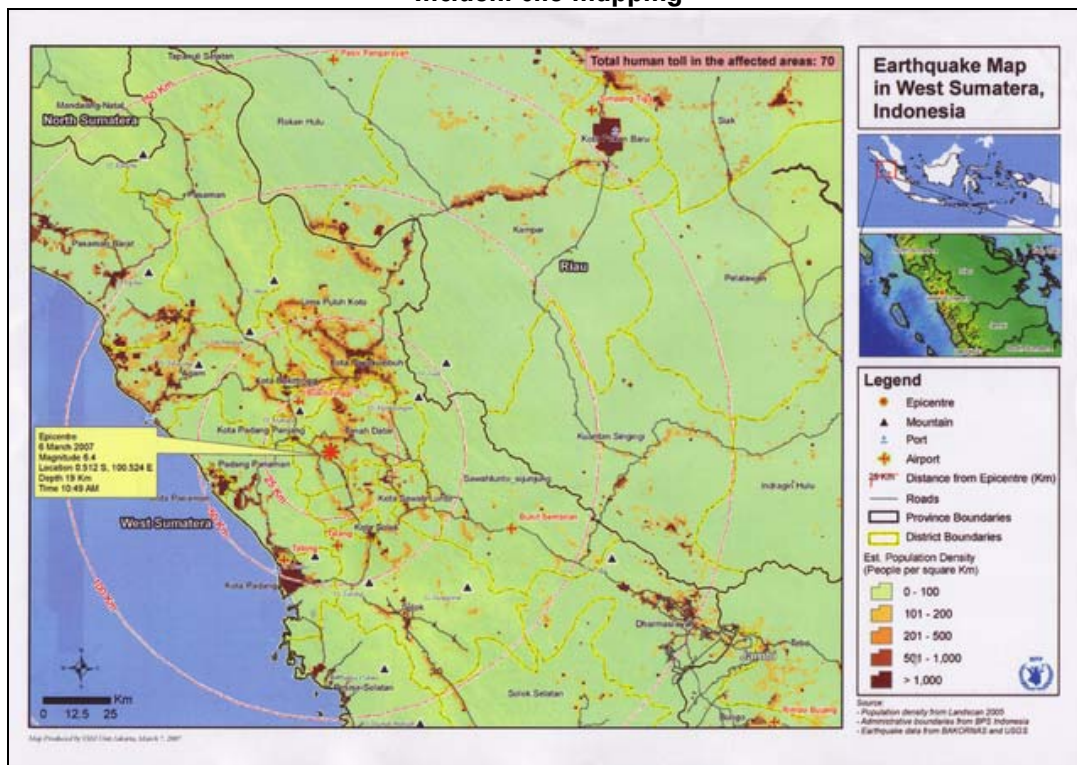
MMI\* : VII-VIII \* Modified Mercalli Intensity

The Pacific Tsunami Warning Center in Hawaii said the earthquake occurred on land, meaning no Tsunami warnings would be issued.

#### Location

- The epicenter is located at 16 km southwest of Batusangkar, Tanah Datar District and at the depth of 33 km in land. Batusangkar is located 102 km north of Padang, the capital city of West Sumatera Province.
- The earthquake affected Tanah Datar, Solok, Padang Pariaman and Padang Panjang Districts.
- The most affected area is Solok, some 96 km northeast of Padang.
- The media reports that tremors have been felt in several cities in Padang and Pekanbaru - Riau, as well as in Singapore and Kuala Lumpur.

#### Incident site mapping





### Background

- An earthquake measuring 6.3 Richter scale - USGS at VII-VIII MMI, struck West Sumatera Province on Tuesday, 6 March 2007 at 10:49 hrs, affecting Tanah Datar, Solok, Padang Pariaman, and Padang Panjang Districts.
- The second earthquake occurred at 12:49 hrs, with the same magnitude as the first one.
- The earthquake was considered to originate from the active volcano Mt. Tandikat.
- Indonesia, the world's largest archipelago, is prone to seismic upheaval due to its location on the so-called Pacific "Ring of Fire," an arc of volcanoes and fault lines encircling the Pacific Basin.

### Impact and Current Situation

#### General

- Based on data from 14 March 2007, it has been reported that 43,719 houses, 999 schools, 335 offices, 801 religious buildings, and 408 other public facilities have been damaged.
- The following table show the damaged buildings as of 14 March 2007:

No	Location	Damaged Houses				Religion Building	Schools	Offices	Public Facilities
		SD	MD	LD	Total				
(1)	(2)	(3)	(4)	(5)	(6)	(7)	(8)	(9)	(10)
1	Solok District	885	631	2,081	3,597	51	116	19	65
2	Tanah Datar District	4,586	5,191	6,870	16,647	356	286	127	206
3	Padang Pariaman District	3,885	3,291	5,001	12,177	140	154	47	36
4	Agam District	2,679	1,894	1,656	6,229	156	195	33	1
5	Lima Puluh Kota District	47	-	158	205	13	26	3	-
6	Solok City	46	192	200	438	13	50	12	18
7	Paya Kumbuh City	76	-	99	175	19	32	14	26
8	Padang Panjang City	707	1,519	1,843	4,069	17	88	38	-
9	Pariaman City	4	4	15	23	1	1	-	2
10	Bukit Tinggi City	10	39	-	49	-	-	-	3
11	Sawahlunto City	-	-	-	0	4	13	4	4
12	Padang City	23	40	47	110	31	38	38	47
	<b>Total</b>	<b>12,948</b>	<b>12,801</b>	<b>17,970</b>	<b>43,719</b>	<b>801</b>	<b>999</b>	<b>335</b>	<b>408</b>

SD: Severe Damage, MD: Moderate Damage, LD: Light Damage

Source: BAKORNAS

#### Transportation

- The blocked road Trans Sumatera is already accessible.
- The air force airport 'Tabing' and the commercial airport 'Minangkabau' are in good condition and accessible.
- BMG does not recommend sea transportation due to current weather conditions.

#### Communication

All communication function is back to normal.

#### Electricity

In some areas, electricity has returned to normal.

#### Water and Sanitation

Shortcomings of water and sanitation still occur in Sungai Pua and Banu Hampu in Agam District. IDPs stay in temporary tents and are living with inadequate water and sanitation conditions.



### Community

- Local media have reported that the communities had received training from the government on disaster preparedness, which has helped them to react to this earthquake.
- The UN Technical Working Group and BAKORNAS PB had conducted contingency planning exercises in the area in 2006, which has proven a resource at the present time.

### Health Facilities

- The following table show the damaged health facilities as of 15 March 2007:

No (1)	Location (2)	Hospital			Puskesmas			Pustu			Polindes		
		SD (3)	MD (4)	LD (5)	SD (6)	MD (7)	LD (8)	SD (9)	MD (10)	LD (11)	SD (12)	MD (13)	LD (14)
1	Solok District	-	-	-	1	2	1	-	3	1	1	-	-
2	Tanah Datar District	-	-	-	3	4	2	5	2	2	7	-	1
3	Padang Pariaman District	-	-	-	-	2	6	1	-	3	-	1	-
4	Agam District	-	-	-	-	1	-	1	8	5	2	2	2
5	Lima Puluh Kota District	-	-	-	-	-	1	-	-	-	-	-	-
6	Solok City	1	-	-	-	-	-	1	8	-	-	-	-
7	Paya Kumbuh City	-	-	-	-	2	2	-	-	2	-	-	1
8	Padang Panjang City	1	-	-	2	1	-	4	2	1	-	-	-
9	Bukit Tinggi City	-	-	-	1	-	-	-	-	2	-	-	-
10	Padang City	-	-	-	-	-	-	-	-	-	-	-	-
	<b>Total</b>	<b>2</b>	<b>0</b>	<b>0</b>	<b>7</b>	<b>12</b>	<b>12</b>	<b>12</b>	<b>23</b>	<b>16</b>	<b>10</b>	<b>3</b>	<b>4</b>

SD: Severe Damage, MD: Moderate Damage, LD: Light Damage

Source: Crisis Centre MOH

### Casualties

The following table shows casualties in each district/city as of 15 March 2007:

No (1)	Location (2)	Dead (3)	Patients		
			Inpatient (4)	Outpatient (5)	Referral (6)
1	Padang City	2	14	-	-
2	Padang Panjang City	4	1	143	29
3	Bukit Tinggi City	7	19	128	-
4	Payakumbuh City	2	-	9	-
5	Pariaman City	-	-	4	-
6	Solok City	6	17	62	20
7	Lima Puluh Kota District	-	-	8	-
8	Solok District	16	-	5,307	-
9	Padang Pariaman District	4	3	240	1
10	Agam District	15	-	928	40
11	Tanah Datar District	12	3	3,065	-
	<b>Total</b>	<b>68</b>	<b>57</b>	<b>9894</b>	<b>558</b>

Source: Crisis Centre MOH



**Caption:** A woman looks at the body of the victims in Solok

- There have been no major public health concerns, although in some areas post traumatic symptoms and psychological problems have been identified. Injured people have been treated in local hospitals or makeshift medical centers. Health services facilities operate well and have sufficient capacity to serve patients. Only in some areas, particularly those difficult to access, health services remain a challenge.
- Most of the patients have head injuries and fractured bones while the rest are minor injuries.

### Internally Displaced Persons



- The majority of the population in the affected areas continues to live outside their former houses and under tarpaulins, either because of damage to their houses or because of fear of aftershocks. Some of them prefer staying close to their homes to take care of their belongings.

**Caption:** One of the IDP locations in West Sumatra

**Caption:** A displaced woman cooking instant noodles as the primary food



- Tanah Datar district has the highest number of IDP. The following table shows the number of IDP as of 15 March 2007:

No (1)	District/City (2)	IDPs (3)
1	Padang City	-
2	Padang Panjang City	25,280
3	Bukit Tinggi City	1,525
4	Payakumbuh City	30
5	Solok City	-
6	Solok District	11,174
7	Padang Pariaman District	5,550
8	Agam District	31,050
9	Tanah Datar District	66,197
10	Limapuluh Kota District	410
	<b>Total</b>	<b>141,216</b>

Source: Bakornas

### Needs Identified

- Identified needs include NFI, shelter materials, school tents, mobile health services, tarpaulins, blankets and clean up tool kits.
- Tents and one field hospital are needed for the referral hospital in Solok.
- There is a shortage of rice stocks and other food items as many shops and markets are not yet open.



- Generally, the coverage of support still tends to be centered in the cities, while some of the worst hit areas are difficult to reach or inaccessible.
- Provision of clean water and sanitation is a priority in the IDP locations.

### National Response

#### Government

- President Susilo Bambang Yudhoyono has instructed armed forces and police to mobilize personnel and heavy equipment, as well as The Department of Social Affairs and the Coordinating Ministry of People's welfare to provide food and medicine.
- The Governor of West Sumatera Province has declared that the Emergency Response Phase will extend a full two weeks after the earthquake hit the province.
- The Coordinating Minister of People's Welfare has committed another IDR 50 million (US\$5,430).
- The Ministry of Social Affairs committed IDR 500 million (US\$54,300).
- The Ministry of Health committed IDR 100 million (US\$10,870) to provincial and district government.
- The National Logistics Agency (BULOG) has been dispatching 100 metric tons of rice to earthquake affected areas.
- The Department of Social Affairs has delivered food (including 23,000 bottles of soy sauce, 57,600 cans of fish, 23,500 bottles of chili sauce and 5,900 bottles of cooking oil) as well as non-food items (such as 2,500 blankets, 2,500 sarongs, 1,000 mattresses, and assorted clothing) to the Bureau of Social Affairs at the province level.
- Parliament members at the national level have delivered IDR 50 million to Padang Panjang City, Solok District and Agam District.

#### BAKORNAS

- BAKORNAS PB deployed two staff to monitor field conditions, conduct a rapid assessment and facilitate the coordination of relief efforts.
- BAKORNAS PB has provided IDR 50 million to SATKORLAK PB in response to the disaster.
- BAKORNAS PB held a coordination meeting on 7 March 2007 with UN agencies and relevant ministries to discuss the coordination mechanism for international assistance.
- BAKORNAS PB provided IDR 50 million (USD 5,430) to the relief effort.

#### MILITARY

- Military have set up field kitchens, health services and field tents, as well as a field hospital in Solok District to assist the affected persons. It has also deployed two teams of troops to provide emergency response assistance.

#### Red Cross

- The Indonesian Red Cross has mobilized a SATGAN team (Disaster Response Team) to establish communication flows and work in close coordination with local SATLAK PB on the damage and needs assessment.
- It also has provided relief items including 20 tarpaulins, 100 blankets, 2 field kitchens, 2 platoon tents, 1 generator and 30 body bags. Two ambulances have also been dispatched.

### International Organization Response

The following table shows the relief funds for West Sumatra Earthquake:



No (1)	Donors (2)	Relief Funds (3)	Unit value (4)	In term of US\$ (5)
1	Australia (AusAid)	250,000	US\$	250,000
2	The Singapore Red Cross (SRC)	50,000	US\$	50,000
3	Netherlands	1,900,000	US\$	1,900,000
4	The Spanish Agency for International Cooperation (AECI)	100,000	EUR	120,000
5	European Commission (EC)	6,600,000,000	Rp	728,477
6	German	2,900,000,000	Rp	320,088
7	German Catholic Bishops	1,200,000,000	Rp	132,450
8	Switzerland	48,000	US\$	48,000
9	Canada	50,000	US\$	50,000
10	United States	100,000	US\$	100,000
11	The European Union	6,600,000,000	Rp	728,477
12	Plan Indonesia	50,000	US\$	50,000
13	Japan	1,100,000,000	Rp	121,413
	<b>Total</b>			<b>4,598,905</b>

- An inter-agency team of UN staff arrived in the area on first available flight to assess the earthquake affected districts of Solok, Agam, and Bukit Tinggi. A number of NGOs (Mdm, OXFAM, CRS, CARE, Caritas, MSF-B, Mercy Corps, Save the Children, etc.) have also conducted assessments in different districts, in coordination with the UN team. The deployment of their support is listed in the following table:

No (1)	Organization (2)	Area (3)	Support (4)
1	<b>MDM</b>	Solok	2 doctors, 3 nurses, 2 logisticians; 2 tons medical equipment
2	<b>ACF</b>	n/a	2 logisticians, 1 nutritionist, 2 watsan specialist; 1,5 tons watsan equipment
3	<b>MSF Belgium</b>	n/a	1 nurses; Medical kits and food/non-food items
4	<b>Unicef</b>	Solok District	30 school tents, 20 water bladders, 500 hygiene kits, 50 cooking sets, 4 boxes of water purification tablets, 500 jerry can, 50 bottles of Air Rahmat (water purification liquid)
5	<b>IMC</b>	Tanah Datar District	n/a

- The United Nations Humanitarian Coordinator, Mr. Bo Asplund, announced that the UN stands ready to support the Government of Indonesia in response to this earthquake.
- An UNDAC Team was placed on stand by a few hours after the earthquake and it is ready to be deployed if required.
- On 10 March, the Government of Malaysia delivered a total of 10.5 tons of supplies, including medicine, sanitation and hygiene items, 3,000 blankets, food supplies and items for infants. The assistance is valued at IDR 1.5 billion.



- Muslim Aid has distributed non-food items, including blankets, clothes, tarpaulins, rubber mats, and food items to Solok and Agam Districts among approximately 3,500 families.
- Mercy Corps, which is targeting the heavy hit area of Solok, has distributed water, water purification aids, non-food items and school tents. In cooperation with Save the Children, Mercy Corps has set up 30 school tents. It has cooperated with PDAM – the State Owned Water Company – to distribute water purification aid and 30,000 liters of clean water. Mercy Corps also has distributed 500 cleaning tool kits. In addition, Mercy Corps will distribute 4,000 school kits and build 15 temporary latrines.
- Yayasan Tanggul Bencana Indonesia (YTBI), in affiliation with ACT Forum Indonesia, distributed 450 food packages in Agam district.
- ACF has finalized its action plan for the affected area which will cover water trucking, emergency latrines and shelter kits sectors, targeting approximately 3,500 families in the Bukit Tinggi area.

### MOH – WHO Action

- MOH, with the support from WHO, has carried out the following actions:
  - Medical evacuation of victims.
  - Established Health Post in disaster location.
  - Established 24 hours Disaster Command Post in PHO West Sumatera.
  - Providing free medical services to the affected communities.
  - Established Disaster Response Team to do assessment and provide assistance to Solok and Batusangkar.
  - Dispatched drugs assistance to hospitals.
- MOH committed IDR 100 million (US\$10,870) to provincial and district government.
- MOH and WHO conducted rapid assessment.
- One WHO EHA staff will join the team in cooperation with one staff from UNOCHA representing the UNTWG-DRR to the affected area.
- Based on needs, health professionals are standby to assist in hospitals from the Regional Crisis centers.
- WHO in cooperation with MOH, UN and other partner agencies has facilitated contingency planning, establishing safe community approach and training of health staff and preparing health facilities using a comprehensive process since 2005 after the Aceh Tsunami.
- WHO in close cooperation with MOH is monitoring the situation and emergency trauma kits are stand by for immediate shipment.
- The following table shows assistance dispatched by MOH and WHO to the affected areas:

No (1)	Type (2)	Total Number (3)	Unit (4)
1	Fold-away Beds	140	unit
2	Command tents	2	unit
3	Emergency kits	2	unit
4	Medicines	1	ton
5	Food supplement for children :		
	a. Biscuit	11	ton
	b. Porridge	1	ton



- The following table shows medical team support:

NO (1)	MEDICAL TEAM (2)	TOTAL		REMARKS (5)	COVERAGE AREA (6)
		TEAM (3)	PERSON (4)		
1	Team from DR. M. Jamil Hosp., Padang	1	-	team	Solok City/District, already covered Solok City/District and Padang Panjang City
2	Team from Pariaman Hospital	1	-	team	Tanah Datar District, already covered Solok City/District and Padang Panjang City
3	Team from Dr. Achmad Muchtar Hosp., Bukit Tinggi	1	-	team	Padang Panjang City
4	Team from Pekanbaru:				
	a. Surgery	-	6	doctors	Will be concentrated in Solok City
	b. Orthopedic	-	2	doctors	
	c. Pediatrician	-	1	doctors	
	d. Eyes Specialist	-	1	doctors	
	e. General Practitioners	-	5	doctors	
5	DR. M. Jamil Hospital and Andalas University:				
	a. Surgery	-	-	doctors	n/a
	b. Orthopedic	-	-	doctors	
	c. General Practitioners	-	-	doctors	
6	Regional Government, South Sumatera	-	25	person	Agam District
7	CDC MOH	-	8	person	n/a
8	PHO West Sumatra	5	-	team	Agam District, Padang City, Pariaman District, Limapuluh Kota District, Payakumbuh District, Solok District, and Bukit Tinggi City
	<b>TOTAL</b>	<b>3</b>	<b>48</b>		

### Status of International Aid

Government has not requested for an international appeal as yet but is open for organizations present in Indonesia to provide assistance through inline ministries. Central, local government and inline ministries are managing the disaster.

### Contact People in Indonesia

Name	Designation	Organization	Phone	Fax	E-mail
Dr. Rustam S. Pakaya, MPH	Head of Department	Crisis Center (PPK) MOH	0215265043 08129602324	0215271111	<a href="mailto:ppkdepkes@yahoo.com">ppkdepkes@yahoo.com</a>
Dr. Vijay Nath Kyaw Win	Medical Officer	EHA, WHO	0215204349 0811933821	0215201164	<a href="mailto:wink@who.or.id">wink@who.or.id</a>

### Source of Information from Indonesia

Information is gathered from the following sources. This report is for reference only and should not be quoted as factual accuracy can change.

- WHO
- UN system
- Crisis Center (PPK), MOH
- BAKORNAS
- Media Centre
- Local news media.