

## **Annex 9: IGNOU Certificate in Health Care Waste Management in South-East Asia Countries**

### **Indira Gandhi National Open University (IGNOU)**

Indira Gandhi National Open University, the largest open university in the democratic world, was established by an act of Indian Parliament in 1985, and started offering academic programmes in 1987 (Diploma in Management and Diploma in Distance Education with 4528 students). Today, it serves the educational aspirations of about 1.3 million students in 30 countries, including India, through eleven schools of studies and a network of 57 regional centres, five sub-regional centres, 1296 study centres/tele-learning centres, 35 partner institutions overseas. The University offers 101 certificate, diploma, degree and doctoral programmes comprising 900 courses, through a strength of 300 faculty members and academic staff at the headquarters and regional centres and about 33,000 counsellors drawn from conventional institutions of higher learning, professionals from various organizations and bodies, among others.

The University has been in existence for only two decades. In such a short time, the University has contributed significantly to higher education and continuing professional development in the country catering to the education of about 12 per cent of total students enrolled in higher education (and more than 50 per cent of total students in distance education) in the country. As a world leader in distance education, it was conferred the **Centre of Excellence** Award in Distance Education in 1993.

### **School of Health Sciences**

The School of Health Sciences was established in the year 1991 as one of the eleven schools of the University. Its prime objective is the development

and delivery of programmes in the field of medicine, nursing, paramedics through distance education mode and the maintenance of their academic standards. The Certificate Programme in Health Care Waste Management is one of the latest programmes developed in the School for the South-East Asia Countries.

### **Certificate in Health Care Waste Management**

The concern for bio-medical waste management has been felt globally with the rise in deadly infections such as AIDS, Hepatitis-B and indiscriminate disposal of health care waste. The United Nations through UN Basel Convention on the control of transboundary movements of hazardous wastes and their disposal has classified health care waste as most hazardous waste, after radioactive waste.

According to WHO, the eleven South-East Asia countries together produce some 3,50,000 tons of health care waste per year, close to 1000 tons a day. As it is not segregated at source, all of it is to be considered hazardous despite the fact that only 10–20 per cent is infectious in nature (Health Situation in the South-East Asia Region, 1998–2000, WHO, 1999).

The main bottleneck to sound health care waste management programme is lack of training and appropriate skills, insufficient resource allocation and lack of adequate equipment. The need to educate different health care professionals/workers, NGOs and other stake holders was thus identified as a priority. To cater the needs of these health care professionals, IGNOU and WHO, SEARO decided to develop and launch Certificate Programme in Health Care Waste Management

in the South-East Asia Region Countries. This programme is a 14 credit 6-month certificate programme, through open and distance learning.

This certificate programme has been developed to create essential knowledge and skills in health care waste and equip the learners to manage it effectively and safely and also safeguard the community against adverse health impact of health care waste.

### Objectives

- ◆ Sensitize the learner about health care waste and its impact on our health and environment.
- ◆ Acquaint the learner about the existing legislation, knowledge and practices regarding infection control and health care waste management practices in South-East Asia Region Countries.

- ◆ Equip the learner with skills to manage health care waste effectively and safely.

### Beneficiaries

Doctors, Nurses, Paramedics, Health Managers and other professional workers with a minimum of 10 + 2 Qualification.

### Programme Package

It is a multimedia package consisting of print material in the form of booklets called blocks, audio-visual materials, teleconferencing and providing counselling by contact sessions where the learners are invited to the Programme Study Centres in India and Partner Institutions in other countries for hands on training. The package will have eight theory blocks, a project and programme guide.

### Detailed Programme Design

Course Code	Title	Credits
BHM-001	<b>Fundamentals: Environment and Health,</b>	
	<b>Health Care Waste Management Regulations</b>	
	<b>Block 1: Understanding Our Environment</b>	<b>1</b>
	Unit 1 Introduction to Environment	
	Unit 2 Environmental Pollutants	
	Unit 3 Interrelationship of Environment and Health	
	Unit 4 Waste Management	
	<b>Block 2: Health Care Waste: Definitions</b>	<b>1</b>
	Unit 1 Definitions, Types and Categories of Waste	
	Unit 2 Principles of Health Care Waste Management	
	Unit 3 Handling Health Care Waste	
	<b>Block 3: Need for a Sound Health Care Waste Management</b>	<b>1</b>
	Unit 1 Impact of Health Care Waste on Our Environment	
	Unit 2 Impact of Health Care Waste on Human Health	
Unit 3 Safety Methodology, Worker Safety and Precautions		

Course Code	Title	Credits
	<b>Block 4: Current Status of Health Care Waste Management Legislation in</b>	
	<b>SEAR Countries</b>	<b>1</b>
	Unit 1 Rules and Legislations	
	Unit 2 Regulatory Mechanisms	
	Unit 3 Current Status in India, Thailand, Indonesia, Sri Lanka, Bangladesh	
	Unit 4 Current Status in Bhutan, DPR Korea, Timor Leste, Maldives, Myanmar, Nepal	
<b>BHM-002</b>	<b>Health Care Waste Management: Concepts, Technologies and Training</b>	
	<b>Block 1: Practical Aspects of Health Care Waste Management</b>	<b>2</b>
	Unit 1 Managerial and Administrative Aspects	
	Unit 2 Integrated Infection Control Management	
	Unit 3 Disinfection and Transportation	
	Unit 4 Capacity Building, Training and Monitoring	
	<b>Block 2: Systems and Technologies in Health Care Waste Management</b>	<b>2</b>
	Unit 1 Systems Options	
	Unit 2 Treatment and Disposal of Health Care Waste:	
	Burn Technologies	
	Unit 3 Treatment and Disposal of Health Care Waste:	
	Non-Burn Technologies	
	Unit 4 Innovative Concepts and Possibilities	
	<b>Block 3: Health Care Waste Management and Emerging Issues</b>	<b>1</b>
	Unit 1 Managing Waste Water from Health Care Facilities	
	Unit 2 Management of Wastes from Immunizations	
	Unit 3 Occupation and Patient Safety	
	Unit 4 Success Stories	
	<b>Block 4: Training Manual for Waste Handlers</b>	<b>1</b>
<b>BHMP-001</b>	<b>Project</b>	<b>4</b>

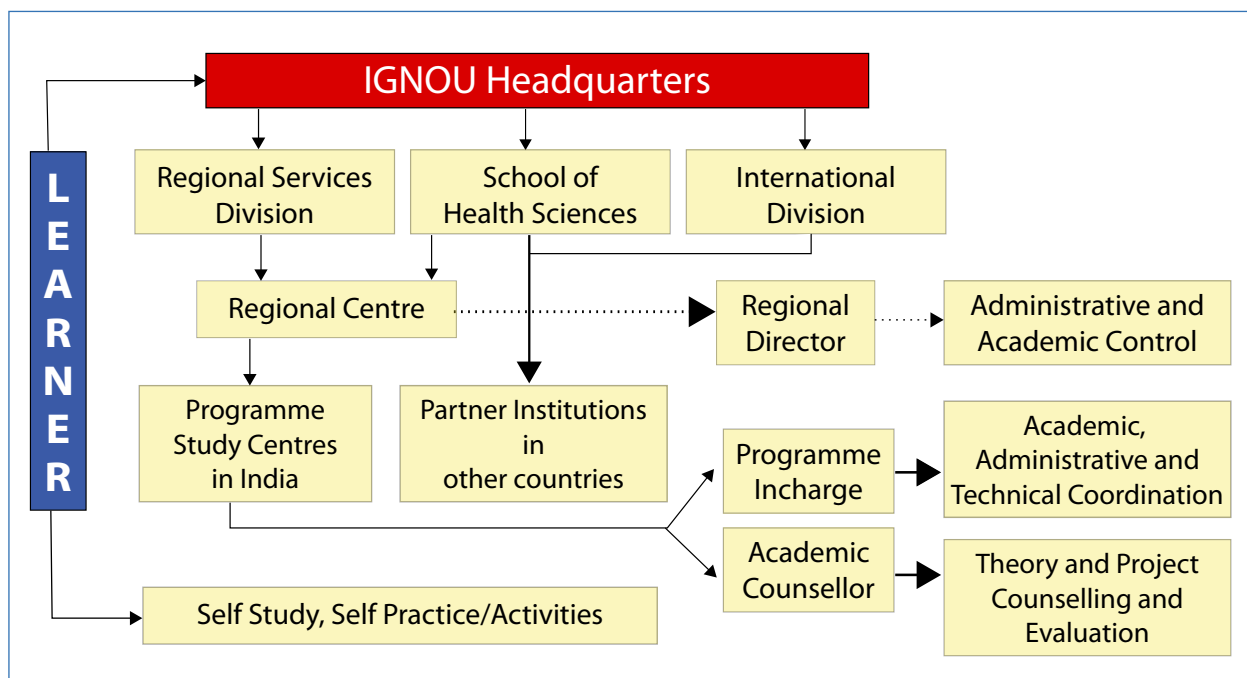
## Credit System

In IGNOU parlance, the study hours are measured in credit system. One credit is equivalent to 30 learning hours. For example, 14 credits of Certificate in Health Care Waste Management programme means an average student will be required to give 420 hours (14 X 30) of input for this programme which includes theory reading,

undertaking a project, hands on training, video viewing, counselling etc.

## Implementation Plan 2006

The programme will be implemented through a network of Programme Study Centres (PSCs) in India and Partner Institutions (Pis) located in



other South-East Asia (SEA) and other countries. These Programme Study Centres and Partner Institutions will be located in health care institutions like medical colleges, hospitals, district and private hospitals, rural health centres, etc. A team of trained teachers called counsellors will be identified and trained for providing academic counselling and supervising the Programme Study Centres/Partner Institutions. The administrative control will be through the Regional Centres (RCs) of IGNOU located usually at state capitals nationally, by the Partner Institutions, and Indian Consulate in other countries and the School of Health Sciences (SOHS) located at the IGNOU Headquarters, Delhi, India.

### Evaluation

Evaluation will be through theory and project evaluation. 70 per cent weightage will be kept for theory term-end, examination and 30 per cent for project evaluation. 50 per cent minimum pass

mark in each component separately is required for successful completion of the programme.

Term-end examination of theory will be held twice in a year i.e. June and December. There will be no practical examination.

### Admission Information

Admission Fee	: Rs. 2000/- in India US\$ 400 for other SEA countries
Eligibility	: Doctors, Nurses, Paramedics, Health Managers and other professional workers with a minimum of 10 + 2 Qualification
Duration	: Minimum 6 months : Maximum 2 years
Launching	: January 2006
Session	: January to June : July to December