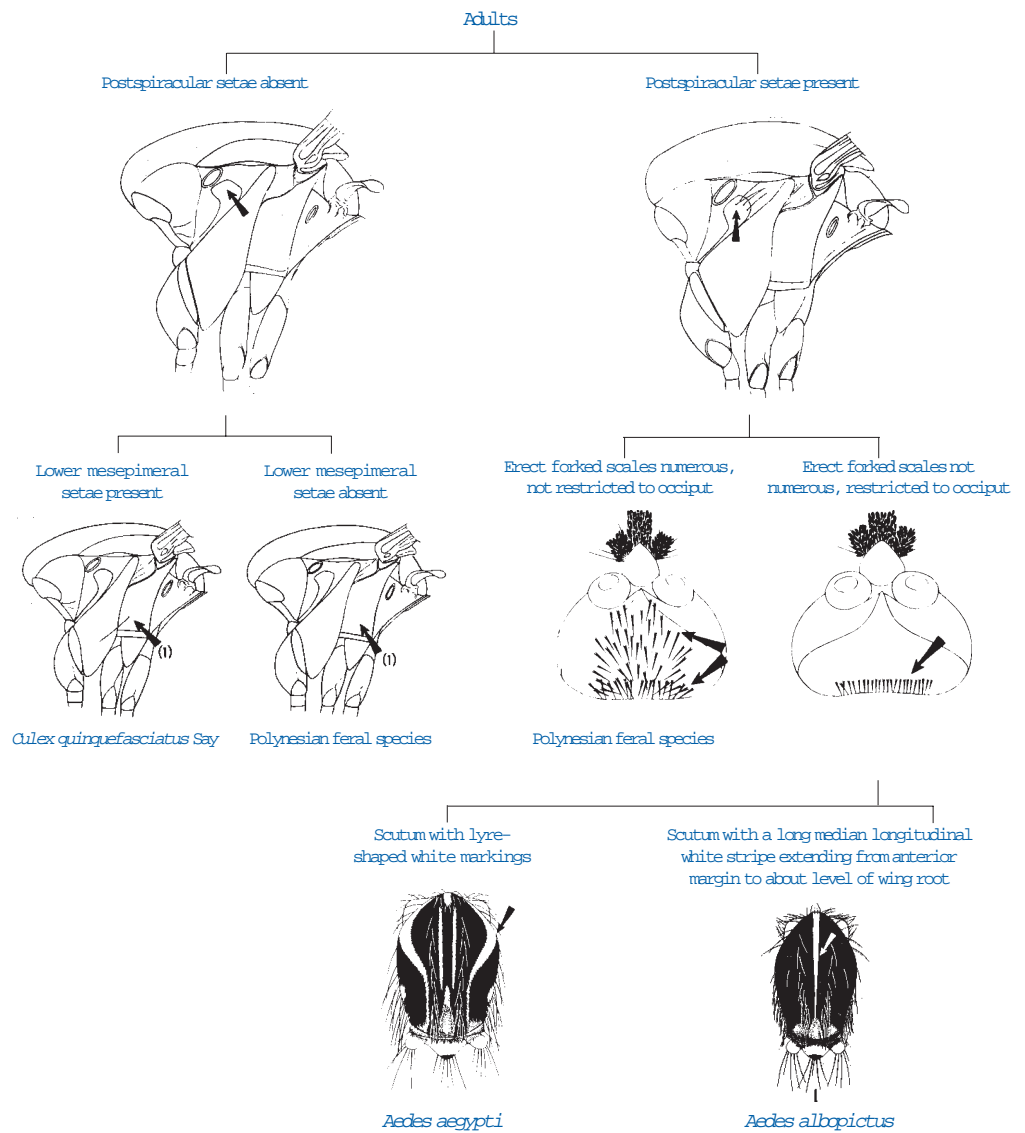


Annex V

Pictorial Key to *Aedes* (*Stegomyia*) Mosquitoes in Domestic Containers in South-East Asia\*

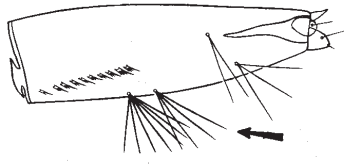


\* Adapted from Yiau-Min Huang. The mosquitoes of Polynesia with a pictorial key to some species associated with filariasis and/or dengue fever. Mosquito Systematics, 1977, 9: 289-322.

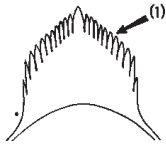
Annex V (contd.)

Larvae

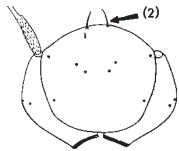
Siphon with 4 pairs of subventral tufts



(1) Mental plate with at least 10 teeth on each side of median tooth

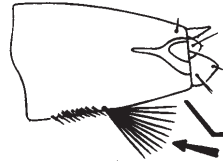


(2) Seta 1-C very slender, filamentous distally, usually very lightly pigmented

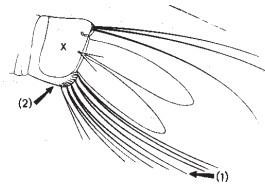
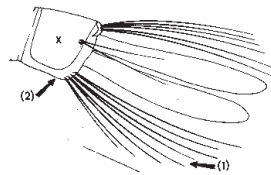


*Culex quinquefasciatus* Say

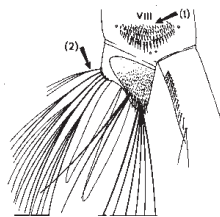
Siphon with a single pair of subventral tufts



(1) Ventral brush with 4 or 5 pairs of setae and  
(2) no precatal tufts

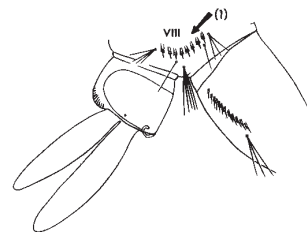


(1) Comb in a patch of several rows of scales, those of distal row elongate and varied in development



Polynesian feral *Aedes* species

(1) Comb in a single row



Annex V (contd.)

